



South Bay Las Mesas Estepona

From €326,000

Estepona Centre, Estepona

Ref: BIND23112

Apartment and project details idyllic setting, yet part of Estepona centre The complex comprises 47 apartments of 2 and 3 bedrooms Avant garde Mediterranean looks Large terraces Impressive sea views Large windows which brighten up the living quarters Designer kitchen Perfect balance between Mediterranean tradition and city-slick modernity- Location details The development is located in the suburbs of Esstepona, just a stone's throw away from nature and recreation areas Walking distance to the marina and the historic town centre of Estepona Walking distance to the "Las Mesas" sports centre which has all sorts of sports facilities and programs such as a large gym, personal training programs, padel tennis, spa centre, physiotherapy, exercise rooms, restaurant and large pa...

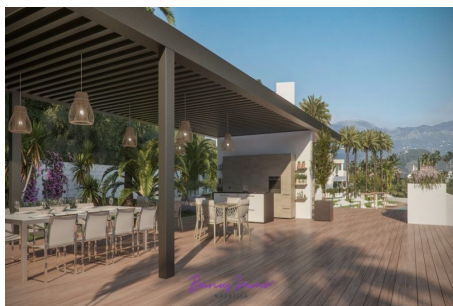
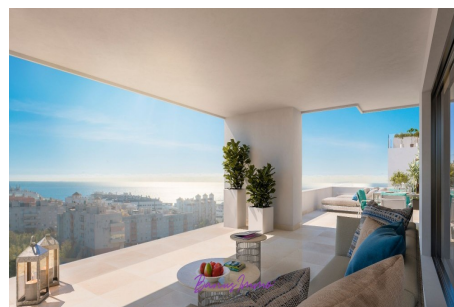
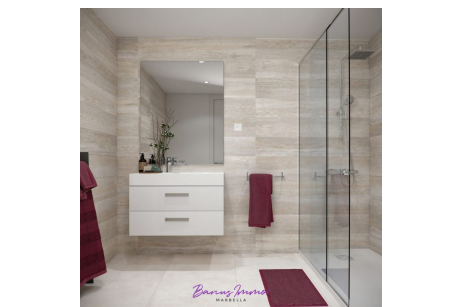
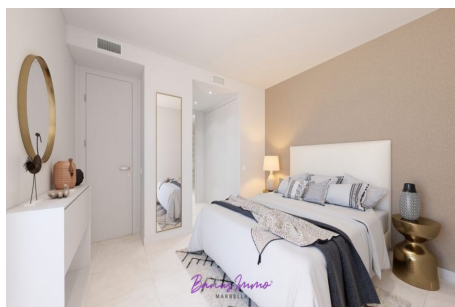
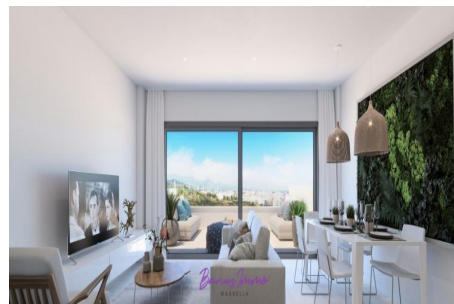
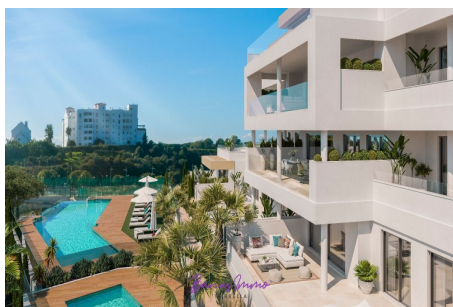
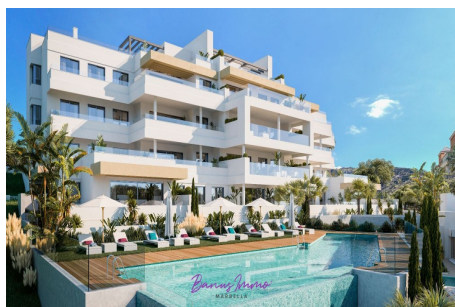
Telephone: +34 637 87 73 78

Email: info@banusimmo.com

La Reserva Del Alcuzcuz, La Azalia 1 -1B, 29679, Benahavis

BanusImmo
MARBELLA

Gallery



Telephone: +34 637 87 73 78

Email: info@banusimmo.com

La Reserva Del Alcazucuz, La Azalia 1 -1B, 29679, Benahavis

Banus Immo
MARBELLA

Property Description

Location: Estepona Centre, Estepona, Spain

Apartment and project details

- idyllic setting, yet part of Estepona centre
- The complex comprises 47 apartments of 2 and 3 bedrooms
- Avant garde Mediterranean looks
- Large terraces
- **Impressive sea views**
- Large windows which brighten up the living quarters
- Designer kitchen
- Perfect balance between Mediterranean tradition and city-slick modernity-

Location details

- The development is located in the suburbs of Esstepona, just a stone's throw away from nature and recreation areas
- Walking distance to the marina and the historic town centre of Estepona
- Walking distance to the "Las Mesas" sports centre which has all sorts of sports facilities and programs such as a large gym, personal training programs, padel tennis, spa centre, physiotherapy, exercise rooms, restaurant and large parking area.
- Excellent road links to Puerto Banus and Marbella (20 minutes' drive) and Sotogrande (20 minutes' drive as well)
- Lots of golf courses around with Estepona Golf and Valle Romano Golf within a 5-minute drive radius

Some building specifications

- Aluminium window frames
- Electric blinds in all bedrooms
- Security access door
- Lacquer painted doors on fitted wardrobes and interior doors
- Porcelain tiled floors throughout
- Fully fitted kitchen with all appliances
- Air conditioning hot/cold
- Thermostatic taps in bathrooms

Communal areas include

- Gym

- Multipurpose community room
- Storage rooms with ceramic floors
- Lift
- Gardens and green zones
- Children´s pool and adult pool

Prices and sizes

See attached file under "documents"

The information indicated for the properties offered for sale on this website is believed to be correct at time of advertising and is subject to errors or omissions, price changes, prior sale or withdrawal from the market.

Additional Info

For Sale	Beds: 2	Baths: 2
Type: Apartment	Area: 82 sq m	sea views
contemporary design	large terraces	south facing
gym	adult pool	children's pool
Built Area : 82 sq m	Terrace Size : 25 sq m	