



## 4 Bed Townhouse For Sale

**€680,000**

**Estepona, Costa del Sol**

**Ref: R188101**

Townhouse - Terraced, Estepona, Costa del Sol. 4 Bedrooms, 4 Bathrooms, Built 180 m<sup>2</sup>, Terrace 60 m<sup>2</sup>. Setting : Beachfront, Commercial Area, Beachside, Village, Close To Port, Close To Shops, Close To Sea, Close To Schools, Close To Forest, Close To Marina, Urbanisation. Orientation : South. Condition : Excellent. Pool : Communal. Climate Control : Air Conditioning, Hot A/C, Cold A/C, Fireplace. Views : Sea, Mountain, Port, Panoramic, Garden, Pool. Features : Fitted Wardrobes, Near Transport, Private Terrace, Solarium, Satellite TV, Ensuite Bathroom, Wood Flooring, Disabled Access, Barbeque, Double Glazing. Furniture : Fully Furnished. Kitchen : Fully Fitted. Garden : Communal, Landscaped. Security : Gated Complex, Entry Phone, 24 Hour Security. Parking : Communal, Private. Utilities : Ele...

Telephone: +34 637 87 73 78

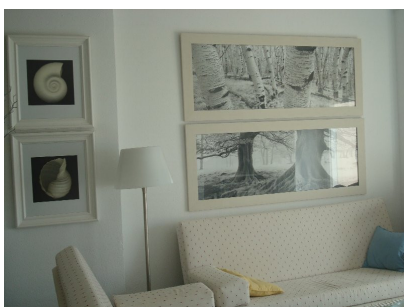
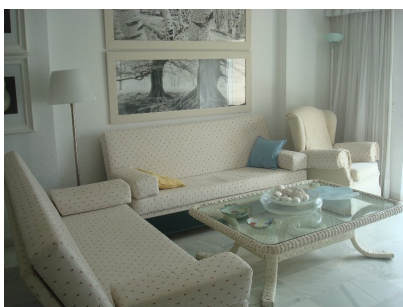
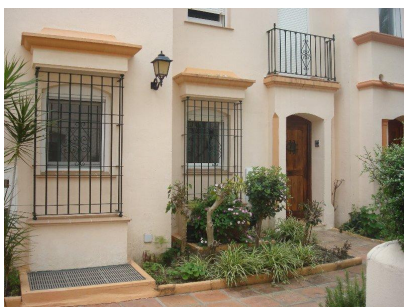
Email: [info@banusimmo.com](mailto:info@banusimmo.com)

La Reserva Del Alcuzcuz, La Azalia 1 -1B, 29679, Benahavis

*BanusImmo*  
MARBELLA



# Gallery



Telephone: +34 637 87 73 78

Email: [info@banusimmo.com](mailto:info@banusimmo.com)

La Reserva Del Alcuzcuz, La Azalia 1 -1B, 29679, Benahavis

*BanusImmo*  
MARBELLA

# Property Description

**Location:** Estepona, Costa del Sol, Spain

Townhouse - Terraced, Estepona, Costa del Sol.

4 Bedrooms, 4 Bathrooms, Built 180 m<sup>2</sup>, Terrace 60 m<sup>2</sup>.

Setting : Beachfront, Commercial Area, Beachside, Village, Close To Port, Close To Shops, Close To Sea, Close To Schools, Close To Forest, Close To Marina, Urbanisation.

Orientation : South.

Condition : Excellent.

Pool : Communal.

Climate Control : Air Conditioning, Hot A/C, Cold A/C, Fireplace.

Views : Sea, Mountain, Port, Panoramic, Garden, Pool.

Features : Fitted Wardrobes, Near Transport, Private Terrace, Solarium, Satellite TV, Ensuite Bathroom, Wood Flooring, Disabled Access, Barbeque, Double Glazing.

Furniture : Fully Furnished.

Kitchen : Fully Fitted.

Garden : Communal, Landscaped.

Security : Gated Complex, Entry Phone, 24 Hour Security.

Parking : Communal, Private.

Utilities : Electricity, Drinkable Water, Telephone.

Category : Luxury.

# Additional Info

For Sale	Beds: 4	Baths: 4
Type: Townhouse	Area: 240 sq m	Garden
Pool	Setting: Beachfront	Commercial Area
Beachside	Village	Close To Port
Close To Shops	Close To Sea	Close To Schools
Close To Forest	Close To Marina	Urbanisation
Orientation: South	Condition: Excellent	Pool: Communal
Climate Control: Air Conditioning	Hot A/C	Cold A/C
Fireplace	Views: Sea	Mountain
Port	Panoramic	Garden
Pool	Fitted Wardrobes	Near Transport
Private Terrace	Solarium	Satellite TV
Ensuite Bathroom	Wood Flooring	Access for people with reduced mobility
Barbeque	Double Glazing	Furniture: Fully Furnished
Kitchen: Fully Fitted	Garden: Communal	Landscaped

Security: Gated Complex	Entry Phone	24 Hour Security
Parking: Communal	Private	Utilities: Electricity
Drinkable Water	Telephone	Category: Luxury
Built Area : 240 sq m		