

2 Bed Apartment For Sale

€360,000

Benahavís, Costa del Sol

Ref: R2920529

Spacious 2 Bedroom elevated Ground Floor Apartment, South West facing facing with large sunny terrace and garden Marques de Atalaya Prestigious Community Gated Development Overlooking Atalaya Golf Course The apartment: •Large and bright living/dining room with double patio doors •Siemens fitted kitchen with all appliances and marble counters •Master bedroom with 4 built-in wardrobes and changing area •Generously sized second and third bedroom with built-in wardrobes •Two on-suite bathrooms with walk in showers and a bath •Guest toilet and under floor heating in bathrooms and toilet •Central air conditioning/heating system •Polished marble floors throughout •2 Underground parking spaces with lift to apartment •Lockable underground storage room • Fibre optic, intercom to gate The compl...

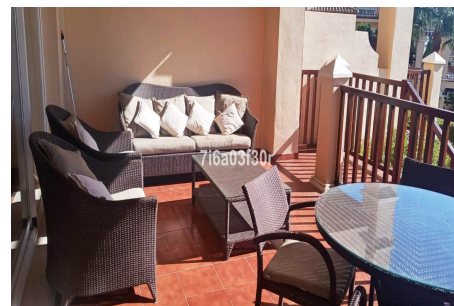
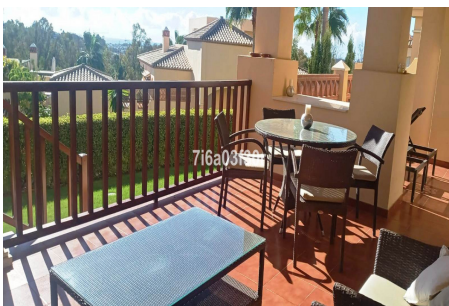
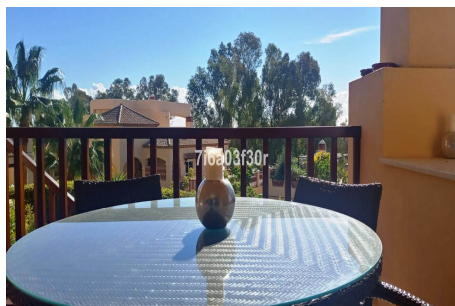
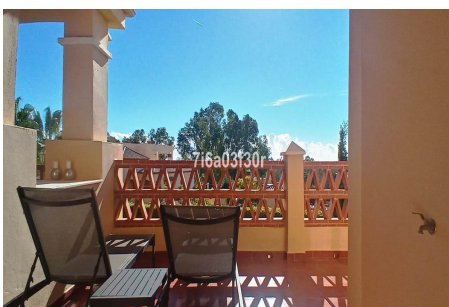
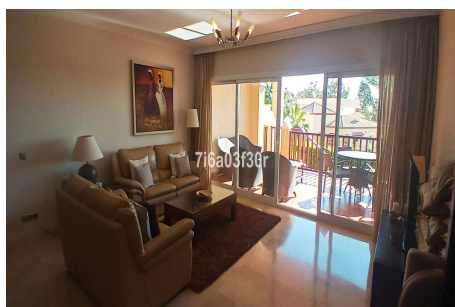
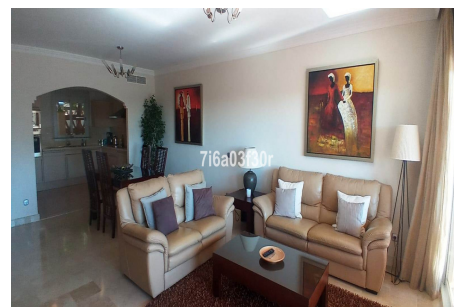
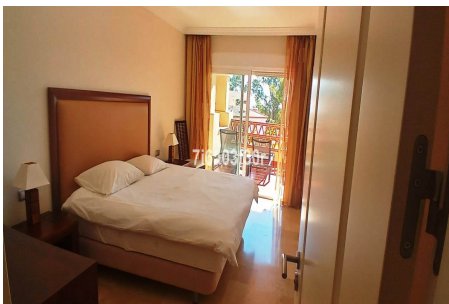
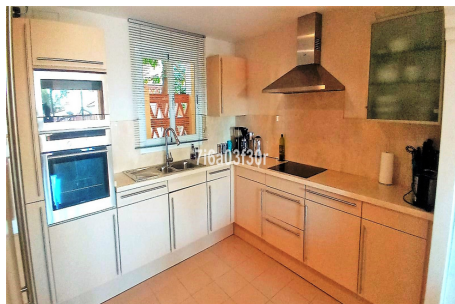
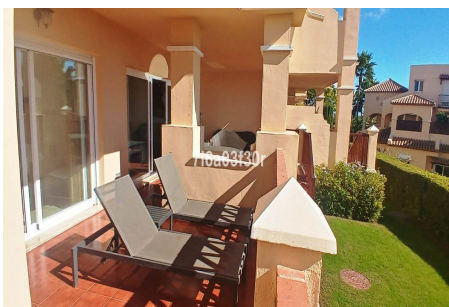
Telephone: +34 637 87 73 78

Email: info@banusimmo.com

La Reserva Del Alcuzcuz, La Azalia 1 -1B, 29679, Benahavis

BanusImmo
MARBELLA

Gallery



Telephone: +34 637 87 73 78

Email: info@banusimmo.com

La Reserva Del Alcuizcuz, La Azalia 1 -1B, 29679, Benahavis

BanusImmo
MARBELLA

Property Description

Location: Benahavís, Costa del Sol, Spain

Spacious 2 Bedroom elevated Ground Floor Apartment, South West facing facing with large sunny terrace and garden

Marques de Atalaya Prestigious Community Gated Development Overlooking Atalaya Golf Course

The apartment:

- Large and bright living/dining room with double patio doors
- Siemens fitted kitchen with all appliances and marble counters
- Master bedroom with 4 built-in wardrobes and changing area
- Generously sized second and third bedroom with built-in wardrobes
- Two on-suite bathrooms with walk in showers and a bath
- Guest toilet and under floor heating in bathrooms and toilet
- Central air conditioning/heating system
- Polished marble floors throughout
- 2 Underground parking spaces with lift to apartment
- Lockable underground storage room
- Fibre optic, intercom to gate

The complex:

- Well designed and built development with spacious apartments
- Beautifully landscaped and maintained gardens
- Gated community with 24 hour security
- Two large outdoor pools plus two children's pools
- Heated indoor pool with steam room, sauna, Jacuzzi
- Small gym and tennis court
- Fully completed development with established community
- Many permanent residents so there are always people around
- Overlooking the high quality Atalaya Golf Courses
- On a quiet side road off the road to the renowned mountain

The area:

- The white hill village of Benahavis, famed for its restaurants is just a few minutes drive away
- The friendly town of San Pedro de Alcántara is also nearby
- Puerto Banus, with all its nightlife, is just 10 minutes drive
- Also close by is Marbella and its beautiful old town and beaches
- Ronda, Gibraltar, Tarifa, Fuengirola and Malaga are all within an hour's drive
- The nearest sandy beach is less than 10 minutes drive
- Nearby there are supermarkets and many small local shops, coffee bars and restaurants
- There are over 50 golf courses within an hours drive

•Selwo Safari Park is just 15 mins drive away

Middle Floor Apartment, Atalaya, Costa del Sol.

2 Bedrooms, 2.5 Bathrooms, Built 120 m², Terrace 39 m².

Setting : Close To Golf, Close To Shops, Close To Sea, Close To Town, Close To Schools, Urbanisation.

Orientation : South West, West.

Condition : Excellent.

Pool : Communal, Indoor, Heated, Children`s Pool.

Climate Control : Air Conditioning, Hot A/C, Cold A/C, U/F/H Bathrooms.

Views : Garden.

Features : Covered Terrace, Lift, Fitted Wardrobes, Private Terrace, Satellite TV, ADSL / WIFI, Gym, Sauna, Tennis Court, Storage Room, Ensuite Bathroom, Marble Flooring, Jacuzzi, Double Glazing.

Furniture : Not Furnished, Optional.

Kitchen : Fully Fitted.

Garden : Communal.

Security : Gated Complex, Entry Phone, 24 Hour Security.

Parking : Underground.

Utilities : Electricity, Drinkable Water, Telephone.

Category : Golf, Holiday Homes, Investment, Luxury, Resale, Contemporary.

Additional Info

For Sale	Beds: 2	Baths: 2.5
Type: Apartment	Area: 159 sq m	Garden
Pool	Setting: Close To Golf	Close To Shops
Close To Town	Close To Schools	Urbanisation
Orientation: South West	West	Condition: Excellent
Pool: Communal	Indoor	Heated
Children`s Pool	Climate Control: Air Conditioning	Hot A/C
Cold A/C	U/F/H Bathrooms	Views: Garden
Covered Terrace	Lift	Fitted Wardrobes
Private Terrace	Satellite TV	WiFi
Gym	Sauna	Tennis Court
Storage Room	Ensuite Bathroom	Marble Flooring
Jacuzzi	Double Glazing	Furniture: Not Furnished
Optional	Kitchen: Fully Fitted	Garden: Communal
Security: Gated Complex	Entry Phone	24 Hour Security

Parking: Underground	Utilities: Electricity	Drinkable Water
Telephone	Category: Golf	Holiday Homes
Investment	Luxury	Resale
Contemporary	Built Area : 159 sq m	