

3 Bed Apartment For Sale

Benahavís, Costa del Sol

€649,000

Ref: R4016488

Stunning contemporary and spacious apartment new development Botanic in Benahavis with panoramic views to the sea, golf courses and mountains. The total area is 185 m2 and includes 3 bedrooms, 2 bathrooms, fully equipped kitchen, motorized roller-shutters, under-floor heating in the bathrooms, extra large terrace with beautiful open views, a lots of green areas, community swimming pool, garage and a storage room. The Malaga International Airport is 45 minutes away by highway and The Gibraltar International Airport is 30 minutes away by highway. This is an excellent option for your second summer residence or new home for your family!

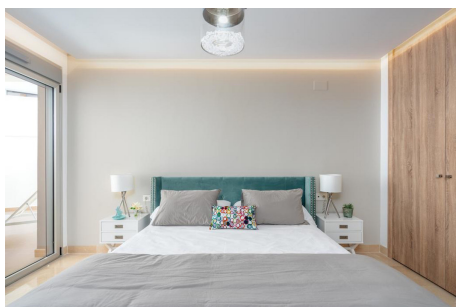
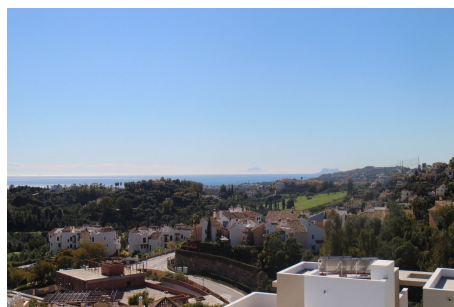
Telephone: +34 637 87 73 78

Email: info@banusimmo.com

La Reserva Del Alcuzcuz, La Azalia 1 -1B, 29679, Benahavis

BanusImmo
MARBELLA

Gallery



Telephone: +34 637 87 73 78

Email: info@banusimmo.com

La Reserva Del Alcuizcuz, La Azalia 1 -1B, 29679, Benahavis

BanusImmo
MARBELLA

Property Description

Location: Benahavís, Costa del Sol, Spain

Stunning contemporary and spacious apartment new development Botanic in Benahavis with panoramic views to the sea, golf courses and mountains. The total area is 185 m2 and includes 3 bedrooms, 2 bathrooms, fully equipped kitchen, motorized roller-shutters, under-floor heating in the bathrooms, extra large terrace with beautiful open views, a lots of green areas, community swimming pool, garage and a storage room. The Malaga International Airport is 45 minutes away by highway and The Gibraltar International Airport is 30 minutes away by highway. This is an excellent option for your second summer residence or new home for your family!

Telephone: +34 637 87 73 78

Email: info@banusimmo.com

La Reserva Del Alcuizcuz, La Azalia 1 -1B, 29679, Benahavis

BanusImmo
MARBELLA

Additional Info

For Sale	Beds: 3	Baths: 2
Type: Apartment	Area: 185 sq m	Garden
Pool	Setting: Frontline Golf	Suburban
Country	Beachside	Close To Golf
Close To Port	Close To Sea	Close To Town
Close To Forest	Urbanisation	Orientation: South
Condition: New Construction	Pool: Communal	Children`s Pool
Climate Control: Air Conditioning	Central Heating	U/F Heating
Views: Sea	Mountain	Golf
Beach	Country	Panoramic
Garden	Pool	Lake
Forest	Covered Terrace	Lift
Fitted Wardrobes	Near Transport	Private Terrace
Solarium	Satellite TV	WiFi
Gym	Storage Room	Utility Room

Ensuite Bathroom	Disabled Access	Marble Flooring
Barbeque	Double Glazing	Furniture: Fully Furnished
Kitchen: Fully Fitted	Garden: Communal	Security: Gated Complex
Electric Blinds	Entry Phone	Alarm System
24 Hour Security	Parking: Underground	Garage
Covered	Open	Street
More Than One	Communal	Private
Utilities: Electricity	Drinkable Water	Telephone
Gas	Category: Cheap	Distressed
Golf	Holiday Homes	Investment
Luxury	Resale	Contemporary
Built Area : 185 sq m		

Telephone: +34 637 87 73 78

Email: info@banusimmo.com

La Reserva Del Alcuzcuz, La Azalia 1 -1B, 29679, Benahavis