

2 Bed Apartment For Sale

€600,000

San Pedro de Alcántara, Costa del Sol

Ref: R4074430

Beautiful and very sunny apartment located within a highly demanded urbanization on San Pedro's beach: Bahialcantara. The complex boasts lush tropical gardens, huge swimming pool and a totally secured territory with cameras and 24 hour security service. The property is nicely set on a ground floor and offers a direct access to the private and communal gardens. It has 2 spacious bedrooms, 2 complete bathrooms, a very nice lounge with a dining area and a fully equipped kitchen with Siemens appliances. Cream marble throughout, heated floors in bathrooms, air conditioning hot / cold, fitted wardrobes and much more. Wonderful holiday home in a great and desired location.

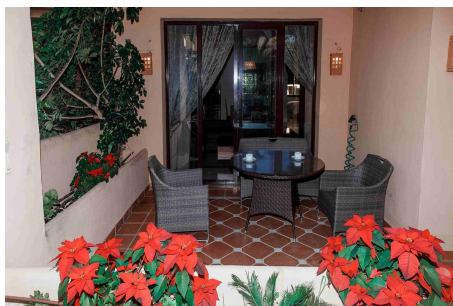
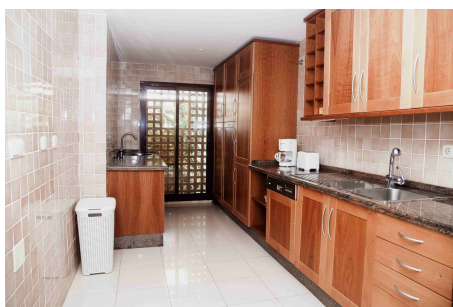
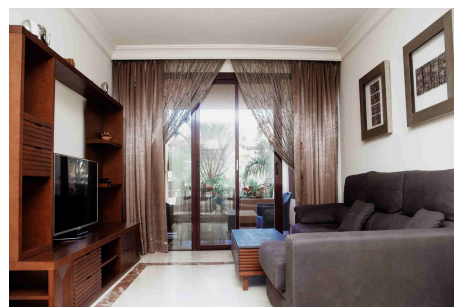
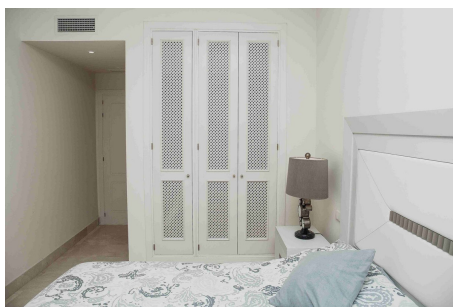
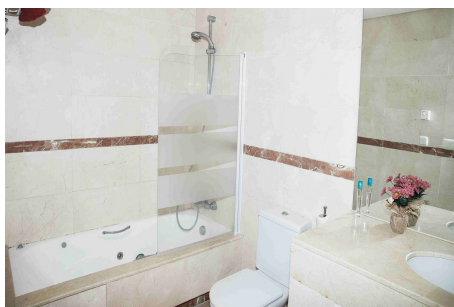
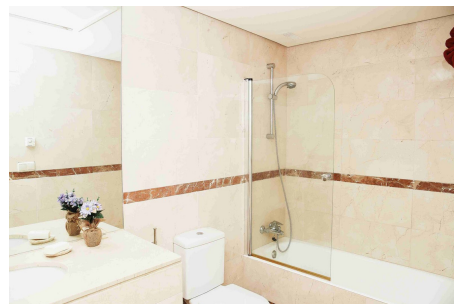
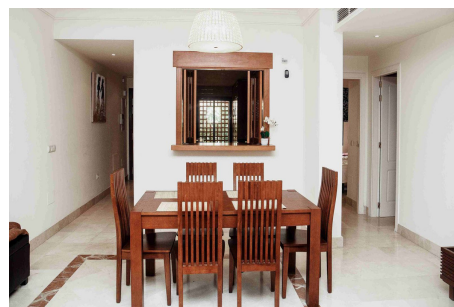
Telephone: +34 637 87 73 78

Email: info@banusimmo.com

La Reserva Del Alcuzcuz, La Azalia 1 -1B, 29679, Benahavis

Banus Immo
MARBELLA

Gallery



Telephone: +34 637 87 73 78

Email: info@banusimmo.com

La Reserva Del Alcuzcuz, La Azalia 1 -1B, 29679, Benahavis

BanusImmo
MARBELLA

Property Description

Location: San Pedro de Alcántara, Costa del Sol, Spain

Beautiful and very sunny apartment located within a highly demanded urbanization on San Pedro's beach: Bahialcantara. The complex boasts lush tropical gardens, huge swimming pool and a totally secured territory with cameras and 24 hour security service.

The property is nicely set on a ground floor and offers a direct access to the private and communal gardens. It has 2 spacious bedrooms, 2 complete bathrooms, a very nice lounge with a dining area and a fully equipped kitchen with Siemens appliances. Cream marble throughout, heated floors in bathrooms, air conditioning hot / cold, fitted wardrobes and much more. Wonderful holiday home in a great and desired location.

Additional Info

For Sale	Beds: 2	Baths: 2
Type: Apartment	Area: 145 sq m	Land Area: 20 sq m
Garden	Pool	Setting: Beachfront
Beachside	Close To Shops	Close To Sea
Close To Town	Close To Schools	Urbanisation
Front Line Beach Complex	Orientation: West	Condition: Excellent
Pool: Communal	Climate Control: Air Conditioning	Hot A/C
Cold A/C	U/F/H Bathrooms	Views: Garden
Pool	Covered Terrace	Lift
Fitted Wardrobes	Near Transport	Private Terrace
WiFi	Storage Room	Ensuite Bathroom
Access for people with reduced mobility	Marble Flooring	Double Glazing
24 Hour Reception	Fiber Optic	Furniture: Optional
Kitchen: Fully Fitted	Garden: Communal	Private
Security: Gated Complex	Entry Phone	24 Hour Security

Safe	Parking: Underground	Covered
Street	Communal	Utilities: Electricity
Drinkable Water	Telephone	Category: Beachfront
Holiday Homes	Investment	Luxury
Resale	Built Area : 145 sq m	Land Size : 20 sq m