

## 4 Bed Villa (Detached) For Sale

**€2,750,000**

**Santa Clara, Costa del Sol**

**Ref: R4080529**

Brand New Modern Contemporary Villa with 4 bedrooms frontline to Santa Clara Golf. Located within Soul Marbella with 24 hour security, this beautiful new house benefits from all the pool and spa facilities onsite. You enter the Villa on the 1st floor where you find 3 bedrooms each facing South/west with stunning views to Golf, Sea and mountains. The Master bedroom is a great size with wonderful en-suite bathroom with Walk-in shower modern bathtub, double sink, toilet and bidet. Ample fitted wardrobes throughout the property and underfloor heating individually controlled. There a 2 further bedrooms sharing a large family bathroom with walk-in shower. On the ground floor level, you have the 4th bedroom with en-suite and a large open plan Siemens Kitchen with feature island. Plenty of space a...

Telephone: +34 637 87 73 78

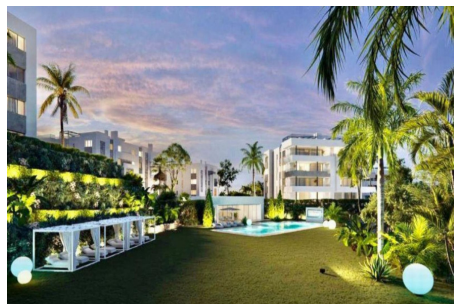
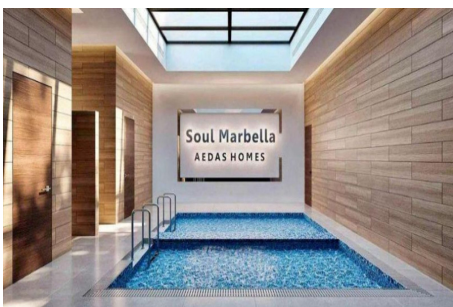
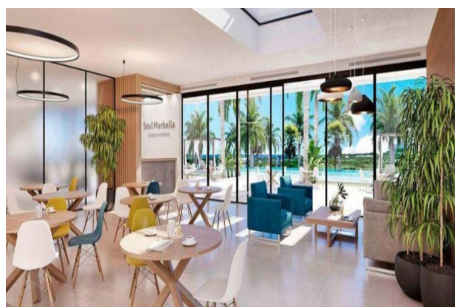
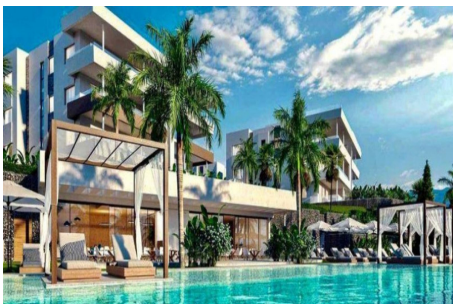
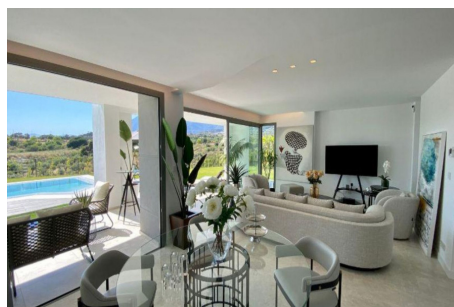
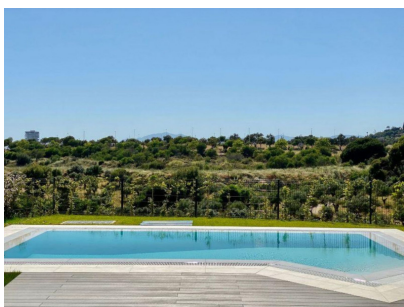
Email: [info@banusimmo.com](mailto:info@banusimmo.com)

La Reserva Del Alcuzcuz, La Azalia 1 -1B, 29679, Benahavis

*BanusImmo*  
MARBELLA



# Gallery



Telephone: +34 637 87 73 78

Email: [info@banusimmo.com](mailto:info@banusimmo.com)

La Reserva Del Alcuizcuz, La Azalia 1 -1B, 29679, Benahavis

*BanusImmo*  
MARBELLA

# Property Description

**Location:** Santa Clara, Costa del Sol, Spain

Brand New Modern Contemporary Villa with 4 bedrooms frontline to Santa Clara Golf.

Located within Soul Marbella with 24 hour security, this beautiful new house benefits from all the pool and spa facilities onsite.

You enter the Villa on the 1st floor where you find 3 bedrooms each facing South/west with stunning views to Golf, Sea and mountains. The Master bedroom is a great size with wonderful en-suite bathroom with Walk-in shower modern bathtub, double sink, toilet and bidet. Ample fitted wardrobes throughout the property and underfloor heating individually controlled.

There are 2 further bedrooms sharing a large family bathroom with walk-in shower.

On the ground floor level, you have the 4th bedroom with en-suite and a large open plan Siemens Kitchen with feature island. Plenty of space and light with 2 sets of double doors leading from the lounge/Dining Room onto the beautiful terraces and gardens.

Planted with Bermuda grass, large palms, shrubs and trees, the gardens are very large with amazing views and private swimming pool.

Other features include a private glass fronted lift which accesses all floors including the roof top solarium with 260 degree views. There is a carport for 2 cars and ample parking for several more. Separate laundry room, alarm system, underfloor heating and the latest AC system make this Villa very attractive. Interior designed to the highest standards, viewing is highly recommended!

Detached Villa, Santa Clara, Costa del Sol.

4 Bedrooms, 3 Bathrooms, Built 267 m<sup>2</sup>, Terrace 211 m<sup>2</sup>, Garden/Plot 850 m<sup>2</sup>.

Setting : Frontline Golf, Close To Golf, Close To Schools, Urbanisation.

Orientation : South, South West.

Condition : Excellent.

Pool : Communal, Private, Indoor.

Climate Control : Air Conditioning, Pre Installed A/C, Hot A/C, Cold A/C, Fireplace, U/F Heating.

Views : Sea, Mountain, Golf, Panoramic.

Features : Covered Terrace, Fitted Wardrobes, Private Terrace, Solarium, Satellite TV, WiFi, Gym, Sauna, Games Room, Storage Room, Ensuite Bathroom, Jacuzzi, Bar, Double Glazing, 24 Hour Reception, Basement, Fiber Optic.

Furniture : Optional.

Kitchen : Fully Fitted.

Garden : Communal, Private.

Security : Gated Complex, Electric Blinds, 24 Hour Security.

Parking : Underground, Garage, Covered, More Than One, Private.

Telephone: +34 637 87 73 78

Email: [info@banusimmo.com](mailto:info@banusimmo.com)

La Reserva Del Alcuercuz, La Azalia 1 -1B, 29679, Benahavis

*BanusImmo*  
MARBELLA

# Additional Info

For Sale	Beds: 4	Baths: 3
Type: Villa (Detached)	Area: 478 sq m	Land Area: 850 sq m
Garden	Pool	Setting: Frontline Golf
Close To Golf	Close To Schools	Urbanisation
Orientation: South	South West	Condition: Excellent
Pool: Communal	Private	Indoor
Climate Control: Air Conditioning	Pre Installed A/C	Hot A/C
Cold A/C	Fireplace	U/F Heating
Views: Sea	Mountain	Golf
Panoramic	Covered Terrace	Fitted Wardrobes
Private Terrace	Solarium	Satellite TV
WiFi	Gym	Sauna
Games Room	Storage Room	Ensuite Bathroom
Jacuzzi	Bar	Double Glazing
24 Hour Reception	Basement	Fiber Optic



Furniture: Optional	Kitchen: Fully Fitted	Garden: Communal
Private	Security: Gated Complex	Electric Blinds
24 Hour Security	Parking: Underground	Garage
Covered	More Than One	Private
Category: Golf	Luxury	Resale
Contemporary	Built Area : 478 sq m	Land Size : 850 sq m