

3 Bed Penthouse For Sale

€839,000

Benahavís, Costa del Sol

Ref: R4116298

Luxurious duplex corner penthouse in Benahavis Stunning contemporary and spacious duplex corner penthouse in a new development which has been completed in 2018. This property can be found in Benahavis and has panoramic views with both seaviews and nature views. Prestigious golf courses like Los Arqueros Golf, La Quinta Golf, Los Naranjos Golf and Atalya Golf are just a few minutes driving. At only 10 minutes driving you're in Puerto Banus. The total area of this luxurious penthouse is 162,33m² + 139,07m² private terraces and includes 3 bedrooms, 3 bathrooms, fully equipped kitchen, motorized roller-shutters, under-floor heating in the entire apartment, purified water installation, high-end Neff kitchen appliances and 2 XL terraces. One batrooms includes a bath, the other two...

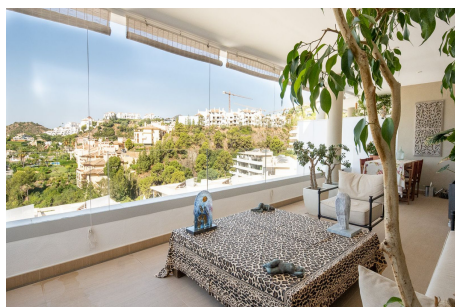
Telephone: +34 637 87 73 78

Email: info@banusimmo.com

La Reserva Del Alcuzcuz, La Azalia 1 -1B, 29679, Benahavis

Banus Immo
MARBELLA

Gallery



Telephone: +34 637 87 73 78

Email: info@banusimmo.com

La Reserva Del Alcuizcuz, La Azalia 1 -1B, 29679, Benahavis

BanusImmo
MARBELLA

Property Description

Location: Benahavís, Costa del Sol, Spain

Luxurious duplex corner penthouse in Benahavis

Stunning contemporary and spacious duplex corner penthouse in a new development which has been completed in 2018.

This property can be found in Benahavis and has panoramic views with both seaviews and nature views. Prestigious golf courses like Los Arqueros Golf, La Quinta Golf, Los Naranjos Golf and Atalya Golf are just a few minutes driving.

At only 10 minutes driving you're in Puerto Banus.

The total area of this luxurious penthouse is 162,33m² + 139,07m² private terraces and includes 3 bedrooms, 3 bathrooms, fully equipped kitchen, motorized roller-shutters, under-floor heating in the entire apartment, purified water installation, high-end Neff kitchen appliances and 2 XL terraces. One bathroom includes a bath, the other two have a walk-in shower. From the master bedroom on the top floor, you enter an amazing terrace with incredible panoramic views.

This property includes 2 communal swimming pools, 2 garages and a storage room/basement.

Botanic is a unique residential complex with 18,000m² of Botanical gardens, born under the criteria of sustainability, ecology and bioclimatic architecture. The buildings projected on different levels optimize the views and offer an exceptional panoramic view of the surroundings.

Green spaces play a leading role in the design, respecting the variety of native species and trees in the area, vertical gardens, and plant corridors that, between each phase, wrap the residential area in a unique natural space.

This property enjoys a south/southwest facing terraces, with one large covered and one open extra large terrace (solarium).

The homes have been designed with spacious rooms, above the current market standards. The modern distribution of the houses integrates the kitchen, the living room and the terrace.

The homes are delivered fully equipped with state-of-the-art qualities. The cream marble floors stand out in all the rooms, large-format cladding in the bathrooms, large sliding windows level with the terrace, high-end appliances and toilets, LED lighting, air conditioning and underfloor heating.

Telephone: +34 637 87 73 78

Email: info@banusimmo.com

La Reserva Del Alcuzcuz, La Azalia 1 -1B, 29679, Benahavis

BanusImmo
MARBELLA

Additional Info

For Sale	Beds: 3	Baths: 3
Type: Penthouse	Area: 301 sq m	Garden
Pool	Setting: Close To Golf	Urbanisation
Orientation: South	South West	Condition: Excellent
Pool: Communal	Climate Control: Air Conditioning	Hot A/C
Cold A/C	U/F Heating	U/F/H Bathrooms
Views: Sea	Country	Panoramic
Covered Terrace	Lift	Fitted Wardrobes
Private Terrace	Solarium	WiFi
Storage Room	Ensuite Bathroom	Marble Flooring
Double Glazing	Basement	Furniture: Not Furnished
Kitchen: Fully Fitted	Garden: Communal	Security: Gated Complex
Electric Blinds	Entry Phone	Parking: Underground
Garage	More Than One	Utilities: Electricity
Drinkable Water	Solar water heating	Category: Golf

Investment

Luxury

Resale

Contemporary

Built Area : 301 sq m

Telephone: +34 637 87 73 78

Email: info@banusimmo.com

La Reserva Del Alcuzcuz, La Azalia 1 -1B, 29679, Benahavis

BanusImmo[®]
MARBELLA