

4 Bed Townhouse For Sale

€495,000

La Mairena, Costa del Sol

Ref: R4217206

SUPERB CORNER TOWNHOUSE SITUATED IN THE MUCH SOUGHT AFTER EL VICARIO COMPLEX WHICH IS NESTLED IN THE STUNNING LA MAIRENA DEVELOPMENT IN THE OJEN COUTRYSIDE. ENJOYING FANTASTIC PANORAMIC VIEWS FROM THE IDYLLIC LOCATION, THIS LUXURY PROPERTY IS ONLY A SHORT 10 MINUTE DRIVE TO EITHER EL VIRIA OR LA CALA DE MIJAS WITH THEIR WIDE RANGE OF AMENITIES AND STUNNING BEACHES. THE ACCOMMODATION IS EXTREMELY LIGHT AND SPACIOUS WITH A DISTRIBUTION OVER THREE LEVELS AS FOLLOWS: LOWER FLOOR - DOUBLE GARAGE SPACE, STORAGE ROOM, SECURE ENTRANCE LEADING TO 4TH DOUBLE GUEST BEDROOM AND SEPARATE GUEST BATHROOM/UTILITY. STAIRS LEADING TO: GROUND FLOOR - HUGE OPEN PLAN LOUNGE / DINING / LUXURY FITTED KITCHEN AND SEPARATE GUEST CLOAKROOM. MAIN ENTRANCE LEADING TO REAR/SIDE PATIO AND GIVING ACCESS TO THE COMMUNAL PO...

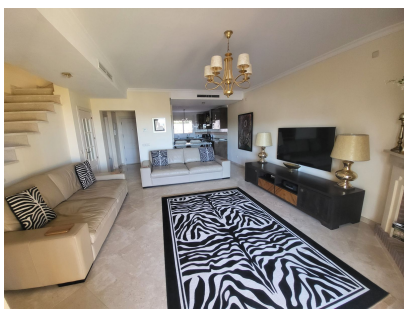
Telephone: +34 637 87 73 78

Email: info@banusimmo.com

La Reserva Del Alcuzcuz, La Azalia 1 -1B, 29679, Benahavis

Banus Immo
MARBELLA

Gallery



Telephone: +34 637 87 73 78

Email: info@banusimmo.com

La Reserva Del Alcuzcuz, La Azalia 1 -1B, 29679, Benahavis

BanusImmo
MARBELLA

Property Description

Location: La Mairena, Costa del Sol, Spain

SUPERB CORNER TOWNHOUSE SITUATED IN THE MUCH SOUGHT AFTER EL VICARIO COMPLEX WHICH IS NESTLED IN THE STUNNING LA MAIRENA DEVELOPMENT IN THE OJEN COUTRYSIDE. ENJOYING FANTASTIC PANORAMIC VIEWS FROM THE IDYLLIC LOCATION, THIS LUXURY PROPERTY IS ONLY A SHORT 10 MINUTE DRIVE TO EITHER ELVIRIA OR LA CALA DE MIJAS WITH THEIR WIDE RANGE OF AMENITIES AND STUNNING BEACHES.

THE ACCOMMODATION IS EXTREMELY LIGHT AND SPACIOUS WITH A DISTRIBUTION OVER THREE LEVELS AS FOLLOWS:

LOWER FLOOR - DOUBLE GARAGE SPACE, STORAGE ROOM, SECURE ENTRANCE LEADING TO 4TH DOUBLE GUEST BEDROOM AND SEPARATE GUEST BATHROOM/UTILITY. STAIRS LEADING TO: GROUND FLOOR - HUGE OPEN PLAN LOUNGE / DINING / LUXURY FITTED KITCHEN AND SEPARATE GUEST CLOAKROOM. MAIN ENTRANCE LEADING TO REAR/SIDE PATIO AND GIVING ACCESS TO THE COMMUNAL POOL AND GARDENS. DOUBLE PATIO DOORS LEAD TO A LARGE SUNNY TERRACE WITH ROOM TO BOTH DINE AND RELAX WHILST ENJOYING THE INCREDIBLE VIEWS. THE TERRACE HAS GLASS CURTAINS TO ALLOW ALL ROUND ENJOYMENT OF THIS GREAT SPACE. STAIRS LEADING TO:

UPPER FLOOR - TWO GENEROUS DOUBLE GUEST BEDROOMS SHARING A GUEST BATHROOM WITH WALK-IN SHOWER, MASTER SUITE WITH FEATURE WALK-IN DRESSING ROOM AND ENSUITE BATHROOM WITH BOTH A BATH AND WALK-IN SHOWER. THE MASTER SUITE HAS A PRIVATE TERRACE WHICH HAS GLASS CURTAINS AND INCREDIBLE VIEWS DOWN TO THE COAST. FINISHED TO THE HIGHEST STANDARDS OF QUALITY WITH MARBLE FITTINGS THROUGHOUT, AIR-CONDITIONING, CORNICING AND BEING IMMACULATELY PRESENTED AND MUCH IMPROVED BY THE PRESENT OWNERS, THIS PROPERTY NEEDS TO BE VIEWED TO FULLY APPRECIATE ALL THAT IT HAS TO OFFER.

THE COMPLEX IS EXCEPTIONALLY WELL MAINTAINED WITH TWO POOLS PLUS AN ADDITIONAL CHILDREN'S POOL AND ALSO PADDLE TENNIS FACILITIES.

LA MAIRENA IS AN EXCLUSIVE URBANISATION SET HIGH ABOVE THE MIJAS AND MARBELLA COASTLINE AND REKNOWNED FOR IT'S INTERNATIONAL GERMAN SCHOOL, ECOS COLLEGE AND THE HOFSAESS TENNIS ACADEMY.

Additional Info

For Sale	Beds: 4	Baths: 3.5
Type: Townhouse	Area: 233 sq m	Garden
Pool	Setting: Country	Mountain Pueblo
Close To Golf	Close To Schools	Close To Forest
Urbanisation	Orientation: South East	South
Condition: Excellent	Pool: Communal	Children`s Pool
Climate Control: Air Conditioning	Hot A/C	Cold A/C
Views: Sea	Mountain	Country
Panoramic	Forest	Covered Terrace
Fitted Wardrobes	Private Terrace	Paddle Tennis
Storage Room	Utility Room	Ensuite Bathroom
Marble Flooring	Double Glazing	Fiber Optic
Furniture: Optional	Kitchen: Fully Fitted	Kitchen-Lounge
Garden: Communal	Security: Gated Complex	Alarm System
Safe	Parking: Underground	More Than One

Private

Utilities: Electricity

Drinkable Water

Category: Investment

Luxury

Resale

Contemporary

Built Area : 233 sq m

Telephone: +34 637 87 73 78

Email: info@banusimmo.com

La Reserva Del Alcuze, La Azalia 1 -1B, 29679, Benahavis

BanusImmo
MARBELLA