



## 2 Bed Apartment For Sale

**€950,000**

**Benahavís, Costa del Sol**

**Ref: R4299535**

ATALAYA HILLS - NEW DUPLEX PENTHOUSE - BEST LOCATION FRONT GOLF WITH PANORAMIC SEA VIEWS - EXCLUSIVE LOCATION POSSIBILITY TO PLACE PRIVATE MINI POOL ON ROOF TERRACE Located front line on Atalaya Golf - this light and airy 2 bedroom penthouse with a huge roof terrace offers fantastic south facing views across the golf course and the lake towards the sea. Golf, lake and sea views from both levels. The spacious living room and kitchen are open and have direct access to the terrace. The kitchen is fully fitted with Bosch appliances and has a separate utility room. There are two bedrooms, including a spacious parental suite with fitted wardrobes and an en-suite bathroom. The apartment is fully air-conditioned and the bathrooms have underfloor heating. The upper terrace is fully decorated, outdo...

Telephone: +34 637 87 73 78

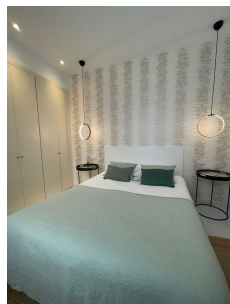
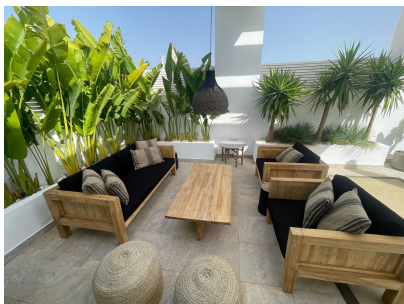
Email: [info@banusimmo.com](mailto:info@banusimmo.com)

La Reserva Del Alcuzcuz, La Azalia 1 -1B, 29679, Benahavis

*BanusImmo*  
MARBELLA



# Gallery



Telephone: +34 637 87 73 78

Email: [info@banusimmo.com](mailto:info@banusimmo.com)

La Reserva Del Alcuzcuz, La Azalia 1 -1B, 29679, Benahavis

*Banus Immo*  
MARBELLA

# Property Description

**Location:** Benahavís, Costa del Sol, Spain

ATALAYA HILLS - NEW DUPLEX PENTHOUSE - BEST LOCATION FRONT GOLF WITH PANORAMIC SEA VIEWS - EXCLUSIVE LOCATION

POSSIBILITY TO PLACE PRIVATE MINI POOL ON ROOF TERRACE

Located front line on Atalaya Golf - this light and airy 2 bedroom penthouse with a huge roof terrace offers fantastic south facing views across the golf course and the lake towards the sea. Golf, lake and sea views from both levels.

The spacious living room and kitchen are open and have direct access to the terrace. The kitchen is fully fitted with Bosch appliances and has a separate utility room.

There are two bedrooms, including a spacious parental suite with fitted wardrobes and an en-suite bathroom. The apartment is fully air-conditioned and the bathrooms have underfloor heating.

The upper terrace is fully decorated, outdoor kitchen, pergola , lounge area.

Atalaya Hills is a new complex built in a modern style designed by renowned architects Villaroel - Torrico with excellent facilities including an infinity swimming pool, fully equipped "technogym" gym, sauna and steam room.

The apartment is sold next to a large parking space and a storage room.

Penthouse, Atalaya, Costa del Sol.

# Additional Info

For Sale	Beds: 2	Baths: 2
Type: Apartment	Area: 229 sq m	Garden
Pool	Setting: Frontline Golf	Close To Golf
Close To Schools	Urbanisation	Orientation: South
Condition: Excellent	Pool: Communal	Climate Control: Air Conditioning
Pre Installed A/C	Hot A/C	Cold A/C
U/F/H Bathrooms	Views: Sea	Golf
Country	Panoramic	Garden
Pool	Lake	Covered Terrace
Lift	Fitted Wardrobes	Private Terrace
Solarium	WiFi	Gym
Storage Room	Utility Room	Ensuite Bathroom
Furniture: Fully Furnished	Kitchen: Fully Fitted	Garden: Communal
Security: Gated Complex	Parking: Underground	Utilities: Electricity
Drinkable Water	Category: Golf	Holiday Homes

Built Area : 229 sq m

Telephone: +34 637 87 73 78

Email: [info@banusimmo.com](mailto:info@banusimmo.com)

La Reserva Del Alcuzcuz, La Azalia 1 -1B, 29679, Benahavis

*BanusImmo*<sup>®</sup>  
MARBELLA