



3 Bed Townhouse For Sale

€440,000

Atalaya, Costa del Sol

Ref: R4364218

Charming semi-detached house located in a small urbanization in Monte Biarritz. At the entrance, the property has a private patio-terrace with a mini-pool (jacuzzi) and two parking spaces. The house is built on two floors: * the ground floor consists of a large living room with the possibility of making another bedroom and with access to a terrace, a fully equipped kitchen and a toilet * The upper floor has 3 double bedrooms, 2 of them with access to a terrace and 2 bathrooms, one of them en-suite and the other that serves for the other bedrooms. * Open basement, which can be used as a storage room, gym, cinema or place to spend your pleasant moments with friends. The residential complex has a very quiet community pool. The distance to services such as shops and restaurants is less th...

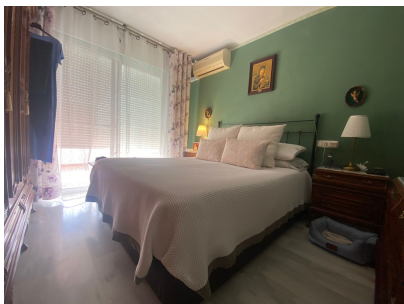
Telephone: +34 637 87 73 78

Email: info@banusimmo.com

La Reserva Del Alcuzcuz, La Azalia 1 -1B, 29679, Benahavis

BanusImmo
MARBELLA

Gallery



Telephone: +34 637 87 73 78

Email: info@banusimmo.com

La Reserva Del Alcuzcuz, La Azalia 1 -1B, 29679, Benahavis

Banus Immo
MARBELLA

Property Description

Location: Atalaya, Costa del Sol, Spain

Charming semi-detached house located in a small urbanization in Monte Biarritz.

At the entrance, the property has a private patio-terrace with a mini-pool (jacuzzi) and two parking spaces.

The house is built on two floors:

- * the ground floor consists of a large living room with the possibility of making another bedroom and with access to a terrace, a fully equipped kitchen and a toilet
- * The upper floor has 3 double bedrooms, 2 of them with access to a terrace and 2 bathrooms, one of them en-suite and the other that serves for the other bedrooms.
- * Open basement, which can be used as a storage room, gym, cinema or place to spend your pleasant moments with friends.

The residential complex has a very quiet community pool.

The distance to services such as shops and restaurants is less than 1 km, the beach is 2 km away. 3 minutes driving time to San Pedro, 10 minutes to Puerto Banús and 15 minutes to Marbella, Estepona or Benahavís Town. The nearest school (Atalaya College or Isdabe) is a couple of minutes away by car.

Nearby there are also several golf courses such as Atalaya, Guadalmina, El Higueral or El Paraíso.

Additional Info

For Sale	Beds: 3	Baths: 2.5
Type: Townhouse	Area: 220 sq m	Garden
Pool	Setting: Close To Golf	Close To Schools
Orientation: South East	Condition: Excellent	Pool: Communal
Climate Control: Air Conditioning	Fitted Wardrobes	Private Terrace
Ensuite Bathroom	Kitchen: Fully Fitted	Garden: Communal
Parking: More Than One	Built Area : 220 sq m	