



4 Bed Villa (Detached) For Sale

€535,000

Atalaya, Costa del Sol

Ref: R4352092

Semi-detached house on the corner with a lot of garden in Atalaya. At the entrance of the house there is a private garden of 100 square meters from which you enter the house to the ground floor. On the ground floor there is a toilet, open equipped kitchen and large living room with fireplace from which there are 2 exits to the terraces with beautiful views, one facing south and one facing west, and to a large garden that is half-open with access to the pool. On the upper floor there are 3 bedrooms and 2 bathrooms. Master bedroom with en-suite bathroom and a west-facing terrace with panoramic views of Miontañas and the garden. Another 2 bedrooms that share a bathroom have access to another terrace that faces east. In the basement there is a one-bedroom apartment with a private garage....

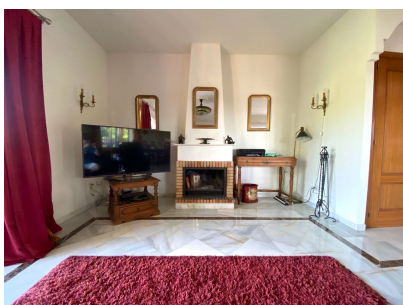
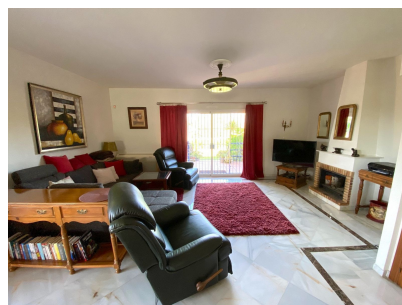
Telephone: +34 637 87 73 78

Email: info@banusimmo.com

La Reserva Del Alcuzcuz, La Azalia 1 -1B, 29679, Benahavis

BanusImmo
MARBELLA

Gallery



Telephone: +34 637 87 73 78

Email: info@banusimmo.com

La Reserva Del Alcauzcuz, La Azalia 1 -1B, 29679, Benahavis

BanusImmo
MARBELLA

Property Description

Location: Atalaya, Costa del Sol, Spain

Semi-detached house on the corner with a lot of garden in Atalaya.

At the entrance of the house there is a private garden of 100 square meters from which you enter the house to the ground floor.

On the ground floor there is a toilet, open equipped kitchen and large living room with fireplace from which there are 2 exits to the terraces with beautiful views, one facing south and one facing west, and to a large garden that is half-open with access to the pool.

On the upper floor there are 3 bedrooms and 2 bathrooms. Master bedroom with en-suite bathroom and a west-facing terrace with panoramic views of Miontañas and the garden. Another 2 bedrooms that share a bathroom have access to another terrace that faces east.

In the basement there is a one-bedroom apartment with a private garage.

This urbanization is located next to the Atalaya golf club, a short distance from the beach.

Additional Info

For Sale	Beds: 4	Baths: 2.5
Type: Villa (Detached)	Area: 300 sq m	Land Area: 100 sq m
Garden	Pool	Setting: Close To Golf
Close To Port	Close To Shops	Close To Sea
Close To Town	Close To Schools	Close To Marina
Urbanisation	Orientation: East	South
West	Condition: Good	Pool: Communal
Climate Control: Air Conditioning	Hot A/C	Cold A/C
Views: Mountain	Country	Panoramic
Garden	Pool	Covered Terrace
Fitted Wardrobes	Near Transport	Private Terrace
Solarium	Satellite TV	Storage Room
Ensuite Bathroom	Fiber Optic	Furniture: Fully Furnished
Kitchen: Fully Fitted	Garden: Communal	Private
Security: Gated Complex	Parking: Underground	Garage

Private

Built Area : 300 sq m

Land Size : 100 sq m

Telephone: +34 637 87 73 78

Email: info@banusimmo.com

La Reserva Del Alcuzcuz, La Azalia 1 -1B, 29679, Benahavis

BanusImmo[®]
MARBELLA