

2 Bed Penthouse For Sale

€375,000

La Mairena, Costa del Sol

Ref: R4432057

Exclusive penthouse located in La Mairena, surrounded by exceptional nature, La Sierra de las Nieves, declared a biosphere reserve by UNESCO, 10 minutes drive from Elviria and the beach and 20 minutes from the centre of Marbella. This urbanization offers a unique setting, next to regal mountains, surrounded by wonderful forests of oaks, holm oaks, wild olive trees and a vast variety of Mediterranean flora and fauna, a real privilege for those seeking to enjoy a healthy life in contact with nature. This flat encapsulates luxury, functionality and style, using only top quality materials, enjoying the breathtaking sea views and the environment with plenty of natural light. It consists of 2 bedrooms, 2 bathrooms, large living-dining room with fireplace, fully fitted kitchen, spacious south fac...

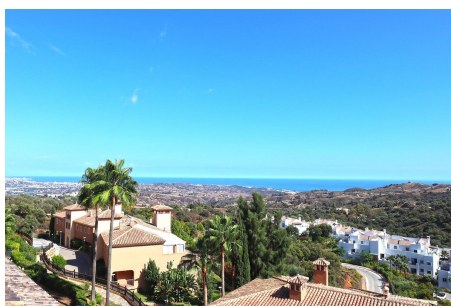
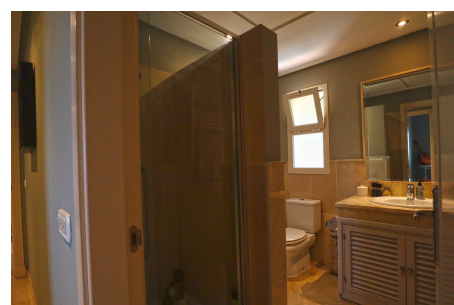
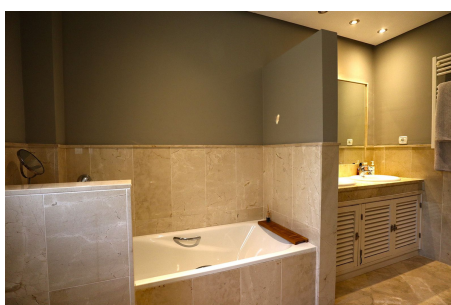
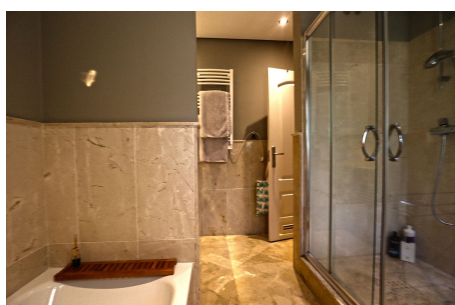
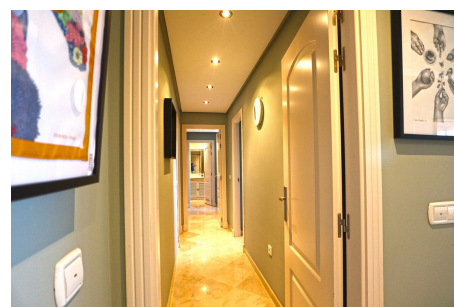
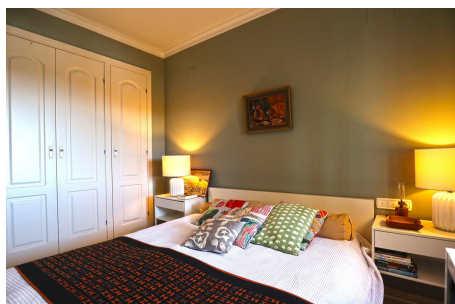
Telephone: +34 637 87 73 78

Email: info@banusimmo.com

La Reserva Del Alcuzcuz, La Azalia 1 -1B, 29679, Benahavis

BanusImmo
MARBELLA

Gallery



Telephone: +34 637 87 73 78

Email: info@banusimmo.com

La Reserva Del Alcuzcuz, La Azalia 1 -1B, 29679, Benahavis

BanusImmo
MARBELLA

Property Description

Location: La Mairena, Costa del Sol, Spain

Exclusive penthouse located in La Mairena, surrounded by exceptional nature, La Sierra de las Nieves, declared a biosphere reserve by UNESCO, 10 minutes drive from Elviria and the beach and 20 minutes from the centre of Marbella. This urbanization offers a unique setting, next to regal mountains, surrounded by wonderful forests of oaks, holm oaks, wild olive trees and a vast variety of Mediterranean flora and fauna, a real privilege for those seeking to enjoy a healthy life in contact with nature. This flat encapsulates luxury, functionality and style, using only top quality materials, enjoying the breathtaking sea views and the environment with plenty of natural light. It consists of 2 bedrooms, 2 bathrooms, large living-dining room with fireplace, fully fitted kitchen, spacious south facing terrace. The urbanisation offers excellent sea and mountain views, spacious communal areas with 2 swimming pools and paddle tennis courts and 24h/24h security by video surveillance.

Additional Info

For Sale	Beds: 2	Baths: 2
Type: Penthouse	Area: 143 sq m	Garden
Pool	Setting: Country	Close To Golf
Close To Schools	Urbanisation	Orientation: South
Condition: Excellent	Pool: Communal	Children`s Pool
Climate Control: Air Conditioning	Fireplace	Views: Sea
Mountain	Golf	Country
Panoramic	Garden	Forest
Lift	Fitted Wardrobes	Private Terrace
Paddle Tennis	Storage Room	Utility Room
Ensuite Bathroom	Marble Flooring	Double Glazing
Fiber Optic	Furniture: Optional	Kitchen: Fully Fitted
Garden: Communal	Security: Gated Complex	Entry Phone
24 Hour Security	Parking: Private	Category: Golf
Holiday Homes	Investment	Luxury

Reduced

Resale

Contemporary

Built Area : 143 sq m

Telephone: +34 637 87 73 78

Email: info@banusimmo.com

La Reserva Del Alcuze, La Azalia 1 -1B, 29679, Benahavis

BanusImmo[®]
MARBELLA