



2 Bed Townhouse For Sale

€480,000

Aloha, Costa del Sol

Ref: R4631236

Lovely bright town house in Aloha golf. Located in prime position within a first line golf urbanization, this property enjoys of a particular brightness and fantastic views on the garden, panoramic views from the master bedroom terrace and la Concha mountain from the back upper terrace. This townhouse has been nicely updated and features two bedrooms and two bathrooms, kitchen, lovely spacious lounge leading to a nice patio and garden. This first line Aloha Golf urbanization with its mature and well kept garden provides a heated pool, children's pool, paddle and tennis courts making this place perfect for families and golfists, also walking distance from Aloha golf club and short drive from school and amenities. A must see.

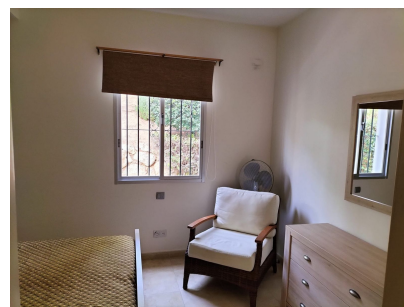
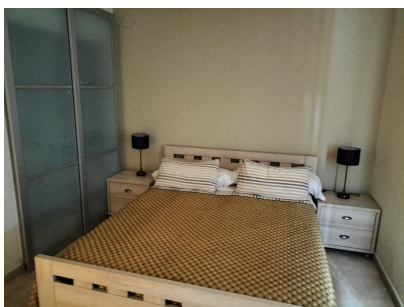
Telephone: +34 637 87 73 78

Email: info@banusimmo.com

La Reserva Del Alcuzcuz, La Azalia 1 -1B, 29679, Benahavis

Banus Immo
MARBELLA

Gallery



Telephone: +34 637 87 73 78

Email: info@banusimmo.com

La Reserva Del Alcuzcuz, La Azalia 1 -1B, 29679, Benahavis

BanusImmo
MARBELLA

Property Description

Location: Aloha, Costa del Sol, Spain

Lovely bright town house in Aloha golf.

Located in prime position within a first line golf urbanization, this property enjoys of a particular brightness and fantastic views on the garden, panoramic views from the master bedroom terrace and la Concha mountain from the back upper terrace.

This townhouse has been nicely updated and features two bedrooms and two bathrooms , kitchen , lovely spacious lounge leading to a nice patio and garden.

This first line Aloha Golf urbanization with its mature and well kept mature garden provides a heated pool, children's pool, paddle and tennis courts making this place perfect for families and golfists, also walking distance from Aloha golf club and short drive from school and amenities.

A must see.

Additional Info

For Sale	Beds: 2	Baths: 2
Type: Townhouse	Area: 196 sq m	Garden
Pool	Setting: Frontline Golf	Close To Golf
Close To Sea	Close To Town	Close To Schools
Close To Marina	Urbanisation	Orientation: South
Condition: Good	Pool: Communal	Heated
Climate Control: Air Conditioning	Central Heating	Views: Golf
Panoramic	Garden	Covered Terrace
Fitted Wardrobes	Near Transport	Private Terrace
WiFi	Paddle Tennis	Tennis Court
Ensuite Bathroom	Access for people with reduced mobility	Double Glazing
Garden: Communal	Security: Gated Complex	Parking: Covered
Communal	Utilities: Electricity	Drinkable Water
Category: Golf	Holiday Homes	Investment

Telephone: +34 637 87 73 78

Email: info@banusimmo.com

La Reserva Del Alcuizcuz, La Azalia 1 -1B, 29679, Benahavis