



Plot For Sale

Estepona, Costa del Sol

€550,000

Ref: R4639642

Residential Plot, Estepona, Costa del Sol. Garden/Plot 4190 m². Setting : Beachside, Close To Shops, Close To Sea, Close To Forest. Orientation : South. Condition : Renovation Required. Pool : Private. Climate Control : Hot A/C, Fireplace, U/F/H Bathrooms. Views : Mountain, Country, Garden, Pool. Features : Covered Terrace, Fitted Wardrobes, Near Transport, Private Terrace, Solarium, WiFi, Storage Room, Utility Room, Barbeque, Fiber Optic. Furniture : Part Furnished. Kitchen : Partially Fitted. Security : Gated Complex. Parking : Covered, Open, Private. Utilities : Electricity, Drinkable Water, Photovoltaic solar panels.

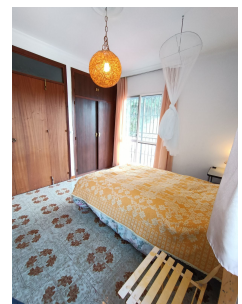
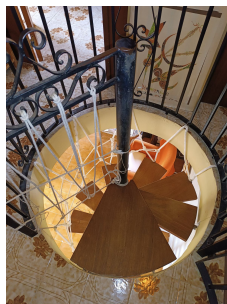
Telephone: +34 637 87 73 78

Email: info@banusimmo.com

La Reserva Del Alcuze, La Azalia 1 -1B, 29679, Benahavis

Banus Immo
MARBELLA

Gallery



Telephone: +34 637 87 73 78

Email: info@banusimmo.com

La Reserva Del Alcuizcuz, La Azalia 1 -1B, 29679, Benahavis

BanusImmo
MARBELLA

Property Description

Location: Estepona, Costa del Sol, Spain

Residential Plot, Estepona, Costa del Sol.

Garden/Plot 4190 m².

Setting : Beachside, Close To Shops, Close To Sea, Close To Forest.

Orientation : South.

Condition : Renovation Required.

Pool : Private.

Climate Control : Hot A/C, Fireplace, U/F/H Bathrooms.

Views : Mountain, Country, Garden, Pool.

Features : Covered Terrace, Fitted Wardrobes, Near Transport, Private Terrace, Solarium, WiFi, Storage Room, Utility Room, Barbeque, Fiber Optic.

Furniture : Part Furnished.

Kitchen : Partially Fitted.

Security : Gated Complex.

Parking : Covered, Open, Private.

Utilities : Electricity, Drinkable Water, Photovoltaic solar panels.

Additional Info

For Sale	Type: Plot	Area: 330 sq m
Land Area: 4190 sq m	Pool	Setting: Beachside
Close To Shops	Close To Sea	Close To Forest
Orientation: South	Condition: Renovation Required	Pool: Private
Climate Control: Hot A/C	Fireplace	U/F/H Bathrooms
Views: Mountain	Country	Garden
Pool	Covered Terrace	Fitted Wardrobes
Near Transport	Private Terrace	Solarium
WiFi	Storage Room	Utility Room
Barbeque	Fiber Optic	Furniture: Part Furnished
Kitchen: Partially Fitted	Security: Gated Complex	Parking: Covered
Open	Private	Utilities: Electricity
Drinkable Water	Photovoltaic solar panels	Built Area : 330 sq m
Land Size : 4190 sq m		

Telephone: +34 637 87 73 78

Email: info@banusimmo.com

La Reserva Del Alcuizcuz, La Azalia 1 -1B, 29679, Benahavis

BanusImmo
MARBELLA