



3 Bed Townhouse For Sale

€600,000

San Pedro de Alcántara, Costa del Sol

Ref: R4654084

BEACH SIDE townhouse in excellent location. 1 MINUTE FROM THE BEACH of San Pedro de Alcántara, the beaches are sandy, between Nuevo Alcántara and the chalet area of Cortijo Blanco, very bright... It has a total of 174m², distributed over two floors plus basement: - On the ground floor of 78 m with hall, living room, dining room, laundry patio, kitchen, toilet and access staircase to the upper floor and basement. -Upstairs, On the first floor of 76 m2 we find three bedrooms and two bathrooms, the master bedroom has an en-suite bathroom and a terrace with views of the garden. -Basement, and at the bottom we find a basement with a garage and a game room or cinema. It also has a private parking space. The house is very well located, just a step away from the beach and very close to the urba...

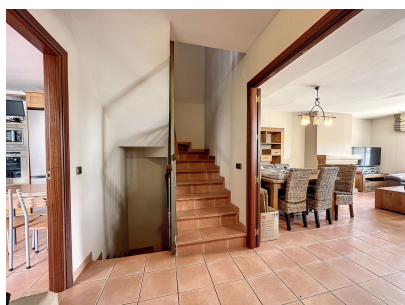
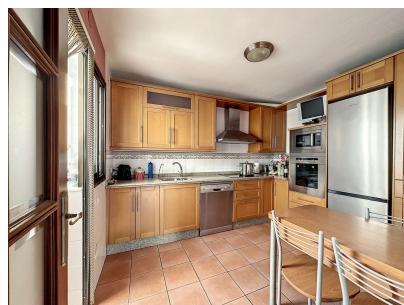
Telephone: +34 637 87 73 78

Email: info@banusimmo.com

La Reserva Del Alcuizcuz, La Azalia 1 -1B, 29679, Benahavis

BanusImmo
MARBELLA

Gallery



Telephone: +34 637 87 73 78

Email: info@banusimmo.com

La Reserva Del Alcazcu, La Azalia 1 -1B, 29679, Benahavis

BanusImmo
MARBELLA

Property Description

Location: San Pedro de Alcántara, Costa del Sol, Spain

BEACH SIDE townhouse in excellent location. 1 MINUTE FROM THE BEACH of San Pedro de Alcántara, the beaches are sandy, between Nuevo Alcántara and the chalet area of Cortijo Blanco, very bright...

It has a total of 174m², distributed over two floors plus basement:

- On the ground floor of 78 m with hall, living room, dining room, laundry patio, kitchen, toilet and access staircase to the upper floor and basement.
 - Upstairs, On the first floor of 76 m² we find three bedrooms and two bathrooms, the master bedroom has an en-suite bathroom and a terrace with views of the garden.
 - Basement, and at the bottom we find a basement with a garage and a game room or cinema.
- It also has a private parking space.

The house is very well located, just a step away from the beach and very close to the urban center as well, with all the necessary services within reach.

The community consists of community gardens and swimming pool.

very close to the Laude International School and a few minutes from the San José School and the center of San Pedro equipped with all services, clinic, banks, supermarkets and two public schools, it is close to cafes, bars, restaurants, beach bars, hairdressers, gym very close to the International Paddle Club and equipped with all services. 5 minutes from Puerto Banús and Guadalmina. 10 minutes from the center of Marbella.

The area is perfect both for living and for investing and renting given the high demand

Additional Info

For Sale	Beds: 3	Baths: 3
Type: Townhouse	Area: 217 sq m	Garden
Pool	Setting: Town	Commercial Area
Beachside	Village	Close To Shops
Close To Sea	Close To Town	Close To Schools
Urbanisation	Orientation: East	Condition: Excellent
Good	Pool: Communal	Climate Control: Air Conditioning
Fireplace	Views: Mountain	Country
Garden	Urban	Street
Covered Terrace	Fitted Wardrobes	Near Transport
Private Terrace	Storage Room	Utility Room
Barbeque	Restaurant On Site	Basement
Furniture: Part Furnished	Kitchen: Partially Fitted	Garden: Private
Security: Alarm System	Parking: Underground	Covered
Private	Utilities: Electricity	Drinkable Water

Photovoltaic solar panels

Solar water heating

Category: Investment

Resale

Built Area : 217 sq m

Telephone: +34 637 87 73 78

Email: info@banusimmo.com

La Reserva Del Alcuzcuz, La Azalia 1 -1B, 29679, Benahavis

BanusImmo[®]
MARBELLA