

2 Bed Penthouse For Sale

€850,000

Benahavís, Costa del Sol

Ref: R4579762

Indulge in the epitome of sophistication with our latest offering – a Duplex Penthouse for sale in the exclusive Atalaya Hills urbanization, Benahavis. This luxurious residence, boasting 120m² of meticulously designed interiors and an expansive 125m² terrace, creates an extraordinary living experience totaling 245m². This haven of elegance is nestled within Atalaya Hills, a paradisiacal setting where tranquility meets opulence. The community offers a wealth of amenities, including a swimming pool, parking, 24-hour security, sprawling gardens, a bar, and a fitness and spa area, ensuring a lifestyle of utmost convenience and leisure. With 2 bedrooms and 2 bathrooms, this Duplex Penthouse is a testament to refined living. Each space is thoughtfully curated, blending modern design with comfort...

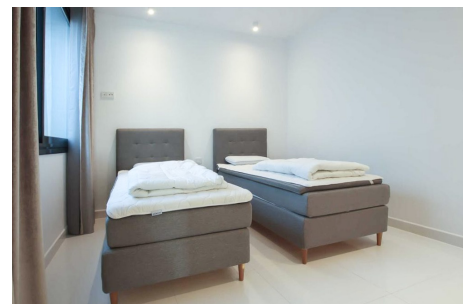
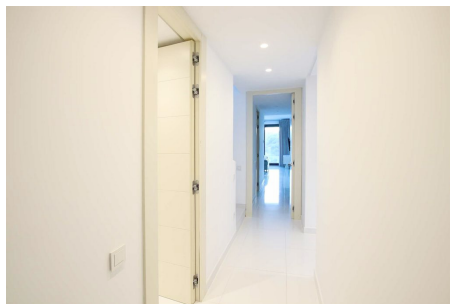
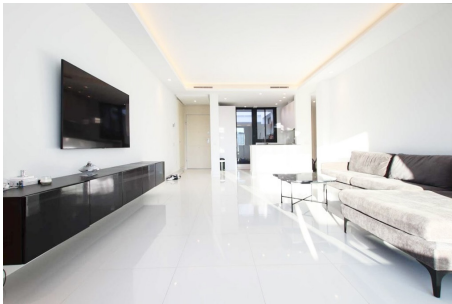
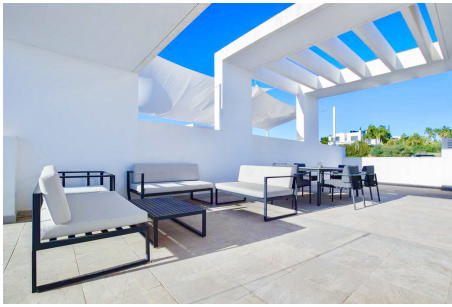
Telephone: +34 637 87 73 78

Email: info@banusimmo.com

La Reserva Del Alcuzcuz, La Azalia 1 -1B, 29679, Benahavis

BanusImmo
MARBELLA

Gallery



Telephone: +34 637 87 73 78

Email: info@banusimmo.com

La Reserva Del Alcuzcuz, La Azalia 1 -1B, 29679, Benahavis

BanusImmo
MARBELLA

Property Description

Location: Benahavís, Costa del Sol, Spain

Indulge in the epitome of sophistication with our latest offering – a Duplex Penthouse for sale in the exclusive Atalaya Hills urbanization, Benahavis. This luxurious residence, boasting 120m² of meticulously designed interiors and an expansive 125m² terrace, creates an extraordinary living experience totaling 245m².

This haven of elegance is nestled within Atalaya Hills, a paradisiacal setting where tranquility meets opulence. The community offers a wealth of amenities, including a swimming pool, parking, 24-hour security, sprawling gardens, a bar, and a fitness and spa area, ensuring a lifestyle of utmost convenience and leisure.

With 2 bedrooms and 2 bathrooms, this Duplex Penthouse is a testament to refined living. Each space is thoughtfully curated, blending modern design with comfort seamlessly. The panoramic terrace becomes an extension of your living space, providing awe-inspiring views of the surroundings.

Step into a world of beauty, where every detail is a testament to luxury and exclusivity. This Duplex Penthouse is not just a home; it's an embodiment of a sophisticated lifestyle. Contact our real estate experts today to make this unparalleled residence yours.

Additional Info

For Sale	Beds: 2	Baths: 2
Type: Penthouse	Area: 245 sq m	Garden
Pool	Setting: Close To Golf	Close To Shops
Close To Town	Close To Schools	Orientation: South East
Condition: Excellent	Pool: Communal	Climate Control: Air Conditioning
Views: Sea	Mountain	Golf
Country	Panoramic	Garden
Fitted Wardrobes	Near Transport	Furniture: Fully Furnished
Kitchen: Fully Fitted	Garden: Communal	Parking: Covered
Category: Luxury	Built Area : 245 sq m	