

Duplex Penthouse in Atalaya Hills

€1,270,000

Atalaya Hills, Benahavis, Marbella

Ref: BI59195

Fantastic frontline golf duplex penthouse for sale in the sought after Atalaya Hills complex in Benahavis Highlights: Avant-garde architecture designed by the famous architects Villarroel - Torrico South-West orientation Unique setting in front of Atalaya Golf course with unobstructed panoramic south orientated views, overlooking 180° the golf courses towards the Mediterranean Sea.- The complex is situated at the end of a cull the sack (Atalaya Golf course and driving range) between all-new luxury contemporary villa's in the exclusive secured urbanisation of La Alqueria - Benahavis, 6 minutes to Puerto Banus, 10 minutes to Marbella, 12 minutes to Estepona, 2 minutes to a "Mercadona" supermarket and International School & College. The penthouse is in excellent condition, ready...

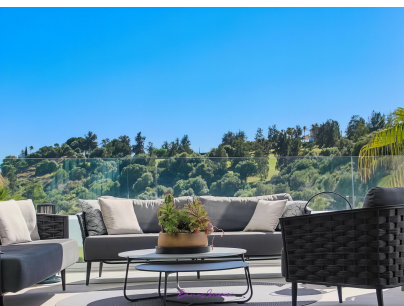
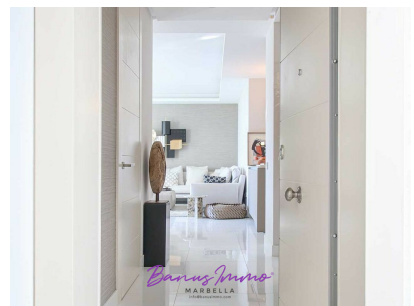
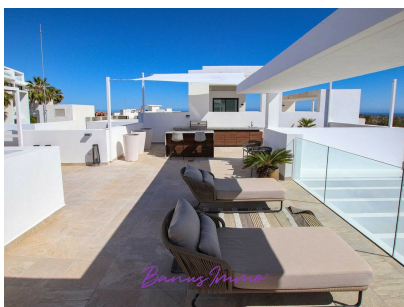
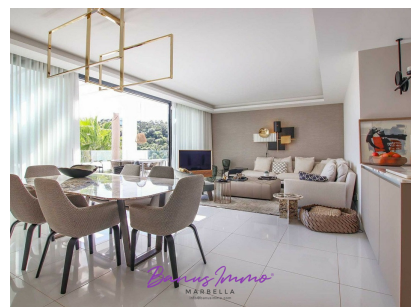
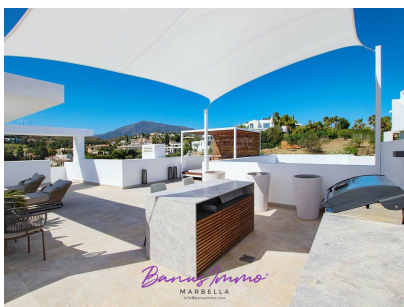
Telephone: +34 637 87 73 78

Email: info@banusimmo.com

La Reserva Del Alcuzcuz, La Azalia 1 -1B, 29679, Benahavis

Banus Immo
MARBELLA

Gallery



Telephone: +34 637 87 73 78

Email: info@banusimmo.com

La Reserva Del Alcuzcuz, La Azalia 1 -1B, 29679, Benahavis

BanusImmo
MARBELLA

Property Description

Location: Atalaya Hills, Benahavis, Marbella, Spain

Fantastic frontline golf duplex penthouse for sale in the sought after Atalaya Hills complex in Benahavis

Highlights:

- Avant-garde architecture designed by the famous architects Villarroel - Torrico
- South-West orientation
- Unique setting in front of Atalaya Golf course with unobstructed panoramic south orientated views, overlooking 180° the golf courses towards the Mediterranean Sea.-
- The complex is situated at the end of a cull the sack (Atalaya Golf course and driving range) between all-new luxury contemporary villa's in the exclusive secured urbanisation of La Alqueria - Benahavis, 6 minutes to Puerto Banus, 10 minutes to Marbella, 12 minutes to Estepona, 2 minutes to a "Mercadona" supermarket and International School & College.
- The penthouse is in excellent condition, ready to move into and fully equipped for rental purposes as well- (the furniture is included in the price)
- Large master bedroom with fitted wardrobes and ensuite large bathroom with Porcelanosa tilings.
- Two additional bedrooms with a shared bathroom, each with fitted wardrobes
- Spacious and bright living - dining room with large sliding doors towards the entrance floor terrace
- Staircase to the very spacious solarium/upper terrace with exceptional views
- Fully fitted designers kitchen with breakfast bar and associated utility room
- Air conditioning for cooling and heating
- Underfloor heating in the bathrooms
- Atalaya Hills comprises 66 luxury apartments distributed over 6 blocks, nestled in a state of the art landscaped gardens
- Communal pool with children's pool and chiringuito
- Gym, sauna,-hammam and shower area.
- The area is secured by Malaca patrol and has camera control
- Underground parking space for 2 cars

For more details contact us via the WhatsApp chat-link at the bottom right of this page!

The information indicated for the properties offered for sale on this website is believed to be correct at the time of advertising and is subject to errors or omissions, price changes, prior sale or withdrawal from the market

Telephone: +34 637 87 73 78

Email: info@banusimmo.com

La Reserva Del Alcuzcuz, La Azalia 1 -1B, 29679, Benahavis

BanusImmo
MARBELLA