



## 5 Bed Townhouse For Sale

**€509,000**

**Fuengirola, Costa del Sol**

**Ref: R4672018**

Unfinished single-family housing project on a 243m<sup>2</sup> urban plot in Los Boliches (Fuengirola), with a fantastic location, in a very quiet residential area close to all services. According to the plan, on the ground floor we find a large living room, three bedrooms, a kitchen with access to a very large interior patio facing southwest. The upper floor is distributed in four bedrooms with built-in wardrobes and two full bathrooms. Solarium with panoramic views. The house has a constructed area of 230m<sup>2</sup>. It has a basement with the same size as the home. A home that you can finish by customizing it to your liking and down to the last detail. Don't miss this opportunity to live where you've always wanted!

Telephone: +34 637 87 73 78

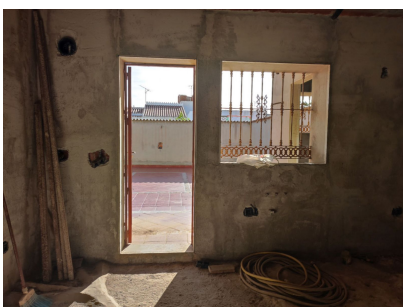
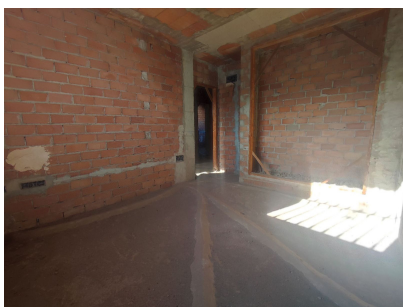
Email: [info@banusimmo.com](mailto:info@banusimmo.com)

La Reserva Del Alcuzcuz, La Azalia 1 -1B, 29679, Benahavis

*Banus Immo*  
MARBELLA



# Gallery



Telephone: +34 637 87 73 78

Email: [info@banusimmo.com](mailto:info@banusimmo.com)

La Reserva Del Alcuizcuz, La Azalia 1 -1B, 29679, Benahavis

*Banus Immo*  
MARBELLA

# Property Description

**Location:** Fuengirola, Costa del Sol, Spain

Unfinished single-family housing project on a 243m<sup>2</sup> urban plot in Los Boliches (Fuengirola), with a fantastic location, in a very quiet residential area close to all services. According to the plan, on the ground floor we find a large living room, three bedrooms, a kitchen with access to a very large interior patio facing southwest. The upper floor is distributed in four bedrooms with built-in wardrobes and two full bathrooms. Solarium with panoramic views. The house has a constructed area of 230m<sup>2</sup>. It has a basement with the same size as the home. A home that you can finish by customizing it to your liking and down to the last detail. Don't miss this opportunity to live where you've always wanted!

## Additional Info

For Sale	Beds: 5	Baths: 3
Type: Townhouse	Area: 230 sq m	Land Area: 243 sq m
Setting: Town	Close To Schools	Urbanisation
Orientation: North East	South West	Condition: New Construction
Views: Urban	Street	Fitted Wardrobes
Private Terrace	Ensuite Bathroom	Basement
Parking: Garage	Private	Built Area : 230 sq m
Land Size : 243 sq m		