

3 Bed Apartment For Sale

€980,000

Atalaya, Costa del Sol

Ref: R4670635

Beautiful and luxurious 3 bedroom duplex penthouse in the urbanization Las Terrazas de Atalaya. This is a small urbanization with 56 apartments with well maintained subtropical gardens and access to a range of facilities such as: four swimming pools, paddle court, outdoor gym and a communal utility area equipped with barbecue. This penthouse has south-west orientation and has a view of the Atalaya golf course to the sea. The penthouse has a hall, living room with integrated kitchen, 2 bedrooms and 1 bathroom on the ground floor. The master bedroom and bathroom are on the top floor. There are also 2 large terraces downstairs and upstairs , which are ideal for entertaining.

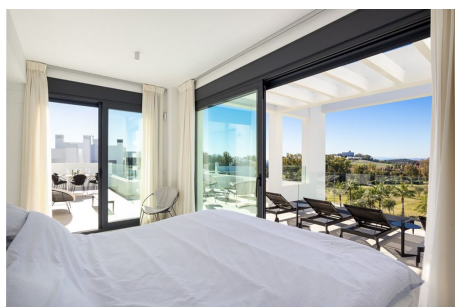
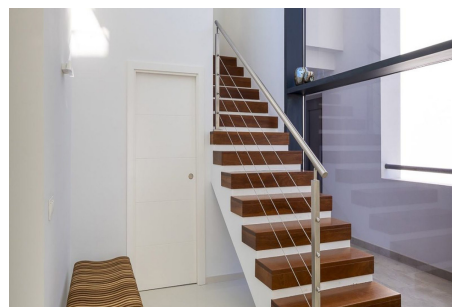
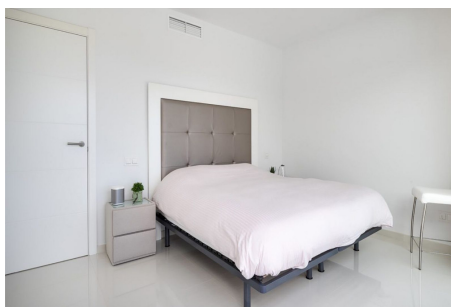
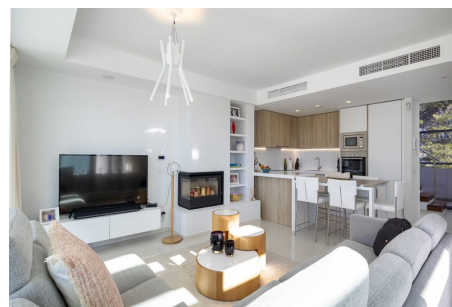
Telephone: +34 637 87 73 78

Email: info@banusimmo.com

La Reserva Del Alcuzcuz, La Azalia 1 -1B, 29679, Benahavis

BanusImmo
MARBELLA

Gallery



Telephone: +34 637 87 73 78

Email: info@banusimmo.com

La Reserva Del Alcuizcuz, La Azalia 1 -1B, 29679, Benahavis

Banus Immo
MARBELLA

Property Description

Location: Atalaya, Costa del Sol, Spain

Beautiful and luxurious 3 bedroom duplex penthouse in the urbanization Las Terrazas de Atalaya.

This is a

small urbanization with 56 apartments with well maintained subtropical gardens and access to a range of

facilities such as: four swimming pools, paddle court, outdoor gym and a communal utility area equipped

with barbecue.

This penthouse has south-west orientation and has a view of the Atalaya golf course to the sea. The penthouse has a hall, living room with integrated kitchen, 2 bedrooms and 1 bathroom on the ground floor.

The master bedroom and bathroom are on the top floor. There are also 2 large terraces downstairs and

upstairs , which are ideal for entertaining.

Additional Info

For Sale	Beds: 3	Baths: 2
Type: Apartment	Area: 295 sq m	Garden
Pool	Setting: Commercial Area	Close To Port
Close To Shops	Close To Sea	Close To Town
Close To Schools	Close To Forest	Close To Marina
Urbanisation	Orientation: South West	Condition: Excellent
Pool: Communal	Climate Control: Air Conditioning	Fireplace
Views: Sea	Mountain	Golf
Panoramic	Garden	Lift
Fitted Wardrobes	Private Terrace	Satellite TV
Gym	Paddle Tennis	Storage Room
Barbeque	Double Glazing	Basement
Furniture: Optional	Kitchen: Fully Fitted	Garden: Communal
Security: Gated Complex	Electric Blinds	Entry Phone
Alarm System	Safe	Parking: Underground

Communal

Utilities: Electricity

Category: Golf

Luxury

Resale

Built Area : 295 sq m

Telephone: +34 637 87 73 78

Email: info@banusimmo.com

La Reserva Del Alcuzcuz, La Azalia 1 -1B, 29679, Benahavis

BanusImmo[®]
MARBELLA