



# INFINITY

MIRADOR DEL PARAISO



*Banus Immo*<sup>®</sup>  
MARBELLA

+34 637 877 378 info@banusimmo.com +34 637 877 368





# LUXURY



**INFINITY**, a new definition of living in Marbella combining luxury, natural beauty and leisure pleasures.

A privileged site of more than **123.000 m<sup>2</sup>** composed by luxury villas, spacious townhouses, modern apartments and penthouses.





# MARBELLA

## THE CAPITAL OF THE COSTA DEL SOL



### Golf Club

- 1 Atalaya Golf & Country Club
- 2 El Paraíso Golf Club
- 3 El Campanario Golf & Country House
- 4 Real Club de Golf Guadalmina
- 5 Los Flamings Golf Club

### Shops

- 6 Mercadona
- 7 Aldi
- 8 SuperCor Express
- 9 Supersol
- 10 Guadalmina Shopping Center
- 11 Centro Comercial Centro Plaza
- 12 Centro Comercial Costa Marbella, El Corte Inglés

### Beach Clubs

- 13 Ocean Club Marbella
- 14 Casa Club Marbella
- 15 Salduna Beach

### Schools

- 16 Colegio Bilingüe Atalaya
- 17 Montessori Marbella
- 18 Colegio San José

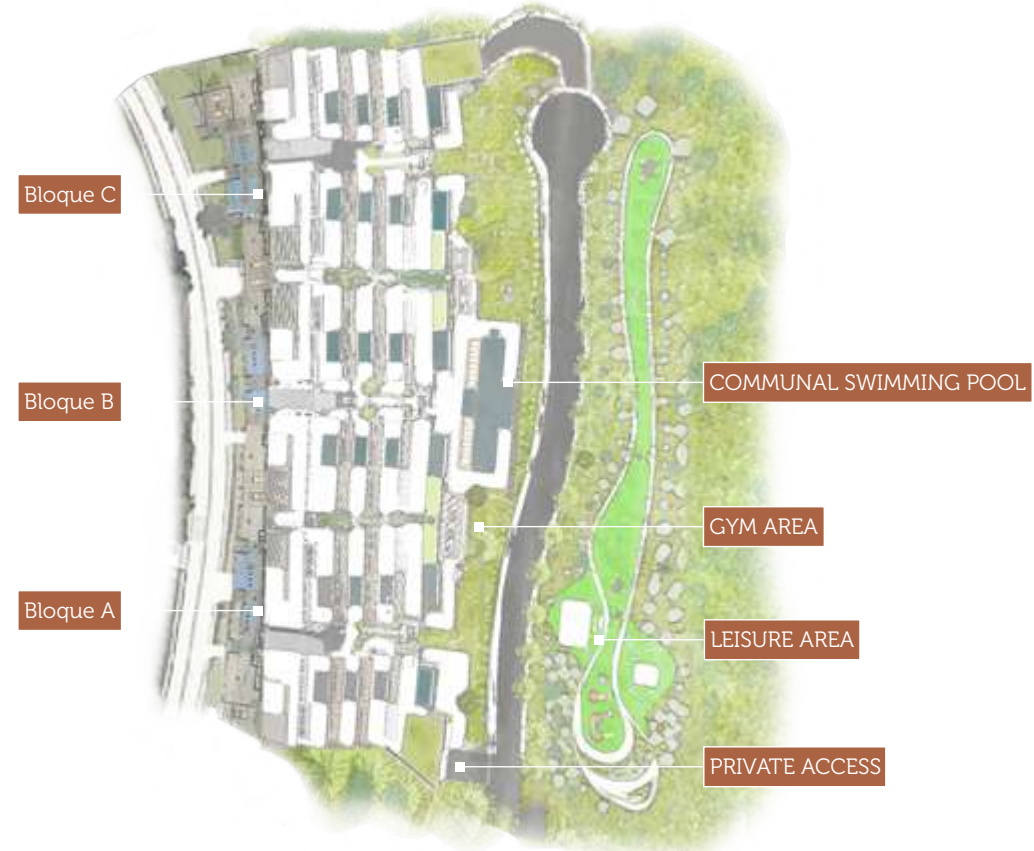
### Maritime & Sports

- 19 Puerto Banús
- 20 Club De Tenis Y Padel Bel Air





# PRIVATE AND GATED COMMUNITY



Our exclusive, private and gated community gives you a feeling of home away from home with your security, amenities and facilities all taken care of to help you settle quickly and comfortably.



# INFINITY

EVERYTHING YOU COULD  
WISH FOR AT YOUR FRONT  
DOOR STEP



Living on the Costa del Sol offers a hassle free, relaxed paradise living experience with everything you could wish for at your front door step: best weather in Europe all year, breathtaking natural beauty and excellent local facilities and amenities, with 36 hole golf course and luxury facilities.





# PENTHOUSE VIEW TERRACE GARDEN

MODERN RESORT  
LIVING

INFINITY is our interpretation of perfect bespoke architecture. We're combining exquisite properties, surrounded by lush, green countryside with a wide array of amenities to create the ideal living community here in **Mirador del Paraíso**.











# PRIVATE RESIDENTIAL

STATE OF THE  
ART FACILITIES



A premises with bespoke modern interior. Designed to take advantage of the panoramic views of the Mediterranean. Open plan south facing design offering natural light all year.







# PRIVILEGED VIEWS

IN A BEAUTIFUL  
NATURAL ENVIRONMENT

Wonderful natural scenery on your doorstep. 15 hectares of gated private land giving the perfect sitting to enjoy what matters most to you.





## QUALITY OF DETAIL

Our exclusive, private and gated community gives you a *feeling of home away from home* with your security, amenities and facilities all taken care of to help you settle quickly and comfortably. **Totally equipped homes**, kitchens, bathrooms and closets. Led lights in all rooms







# MAIN FEATURES

24 HOURS SECURITY

COMMUNAL POOL  
(25 METERS LONG)

PRIVATE TERRACES  
(120/220 METERS)

PRIVATE POOL ALL HOMES

HOME AUTOMATION,  
KEEP IN TOUCH SYSTEM

2/4 PARKINGS PER HOME

SIEMENS APPLIANCES

WOODEN KITCHENS

EXTERNAL CARPENTRY  
2,60 HEIGHT

PENTHOUSES WITH GARDENS

AEROTHERMAL SYSTEM

ONLY 24 APARTMENTS

PENTHOUSES WITH  
PRIVATE ACCESS

A/ C AND UNDERFLOOR  
HEATING SYSTEM  
(SUSTAINABLE AND ECOLOGICAL)

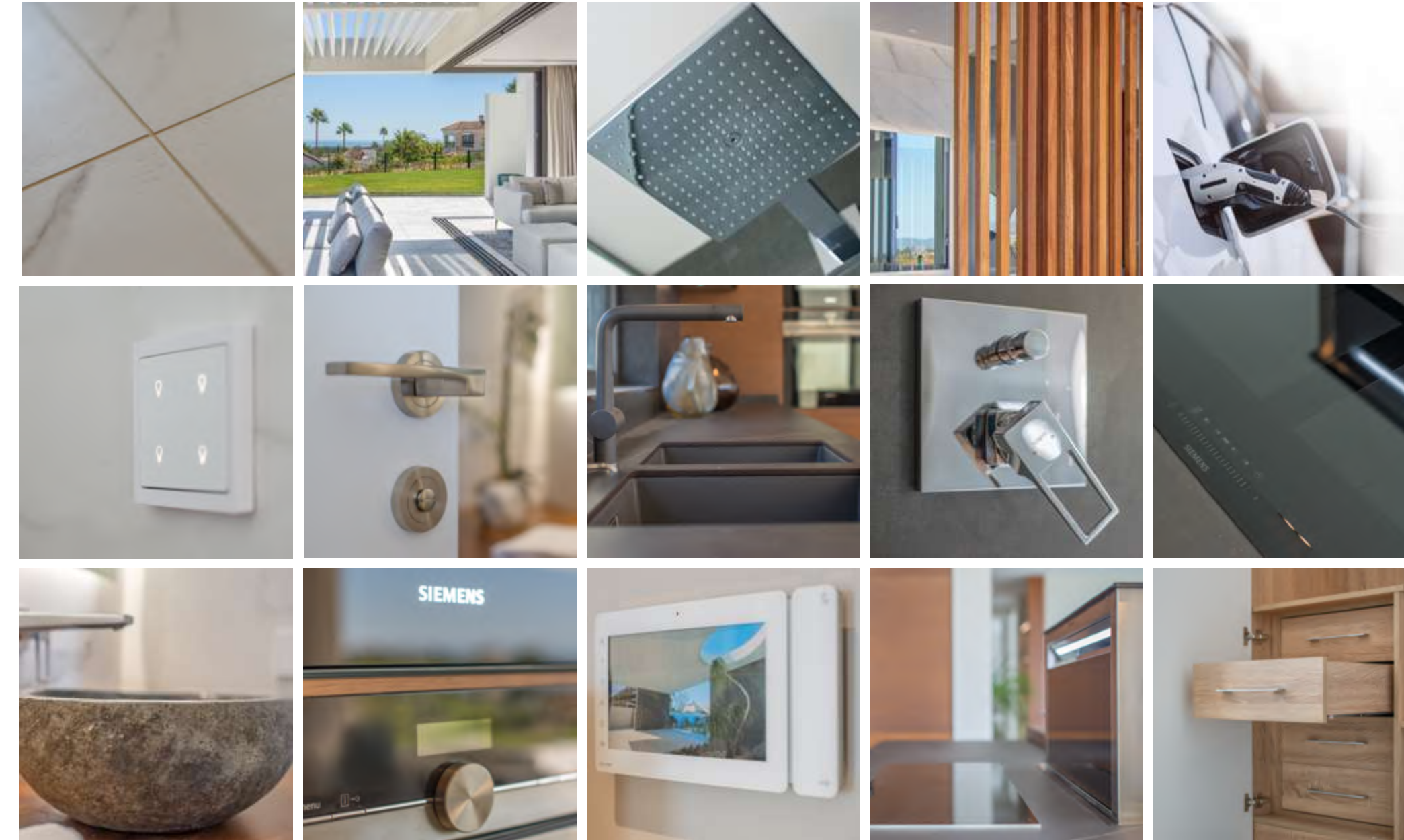
5.000 SQUARE METERS  
OF PRIVATE RUNNING

ELECTRIC CHARGER  
CARS EACH HOME

LARGE STORAGE ROOMS

HANSGROHE AND  
VILLEROY BOSH

GYM





# GARDEN FLOOR A/B/C 01

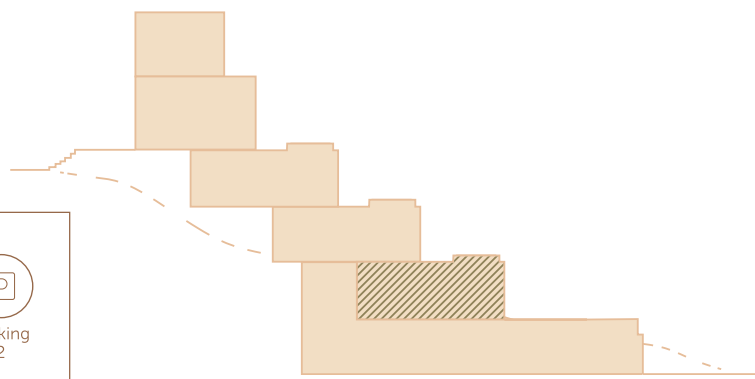


## SURFACES

|  |                                |                                |  |  |   |                                     |
|--|--------------------------------|--------------------------------|--|--|---|-------------------------------------|
|  |                                |                                |  |  |   |                                     |
| Overall<br>388 /<br>504 m <sup>2</sup> | Built<br>333,35 m <sup>2</sup> | Living<br>117,21m <sup>2</sup> | Terrace + porch<br>129,52 m <sup>2</sup> | Multipurpose room<br>53,41m <sup>2</sup> | Garden + pool<br>55 /<br>170 m <sup>2</sup> | Common areas<br>33,21m <sup>2</sup> |

## PROPERTIES

|              |             |           |              |              |
|--------------|-------------|-----------|--------------|--------------|
|              |             |           |              |              |
| Bedroom<br>3 | Shower<br>2 | Pool<br>1 | Storage<br>1 | Parking<br>2 |



# GARDEN FLOOR A/B/C 02

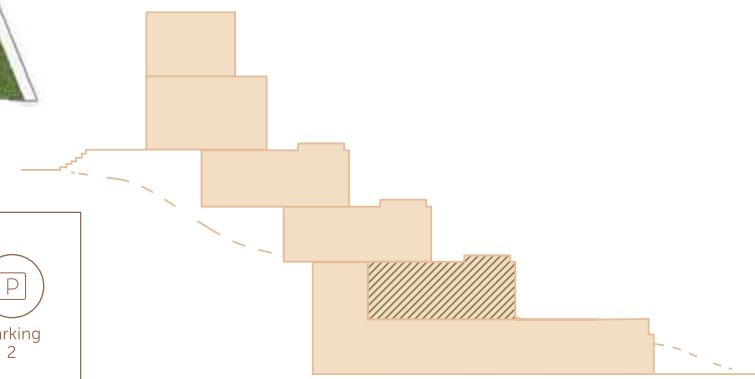


## SURFACES

|  |                                |                                |  |  |   |                                     |
|--|--------------------------------|--------------------------------|--|--|---|-------------------------------------|
|  |                                |                                |  |  |   |                                     |
| Overall<br>388 /<br>504 m <sup>2</sup> | Built<br>333,35 m <sup>2</sup> | Living<br>117,21m <sup>2</sup> | Terrace + porch<br>129,52 m <sup>2</sup> | Multipurpose room<br>53,41m <sup>2</sup> | Garden + pool<br>55 /<br>170 m <sup>2</sup> | Common areas<br>33,21m <sup>2</sup> |

## PROPERTIES

|              |             |           |              |              |
|--------------|-------------|-----------|--------------|--------------|
|              |             |           |              |              |
| Bedroom<br>3 | Shower<br>2 | Pool<br>1 | Storage<br>1 | Parking<br>2 |



24 LUXURY  
APARTMENTS  
[miradorinfinity.com](http://miradorinfinity.com)





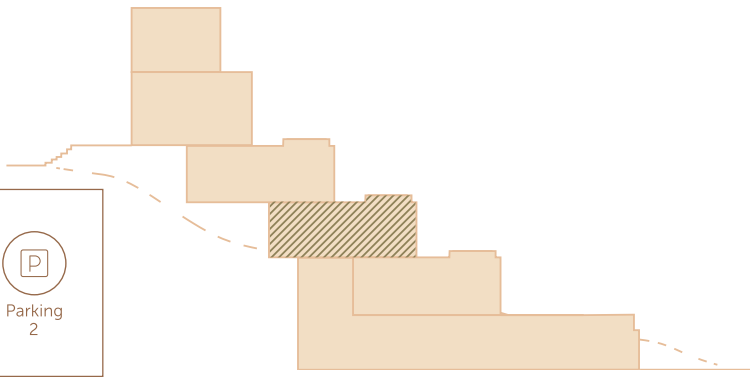
# TERRACE 1<sup>ST</sup> FLOOR A/B/C 11

## SURFACES

|                                  |                                |                                 |   |   |             |                                      |
|----------------------------------|--------------------------------|---------------------------------|---|---|-------------|--------------------------------------|
|                                  |                                |                                 |   |   |             |                                      |
| Overall<br>318,04 m <sup>2</sup> | Built<br>318,04 m <sup>2</sup> | Living<br>119,77 m <sup>2</sup> | Terrace + porch + pool<br>112,08 m <sup>2</sup> | Multipurpose room<br>52,26 m <sup>2</sup> | Garden<br>0 | Common areas<br>33,93 m <sup>2</sup> |

## PROPERTIES

|              |             |           |              |              |
|--------------|-------------|-----------|--------------|--------------|
|              |             |           |              |              |
| Bedroom<br>3 | Shower<br>2 | Pool<br>1 | Storage<br>1 | Parking<br>2 |



# TERRACE 1<sup>ST</sup> FLOOR A/B/C 12

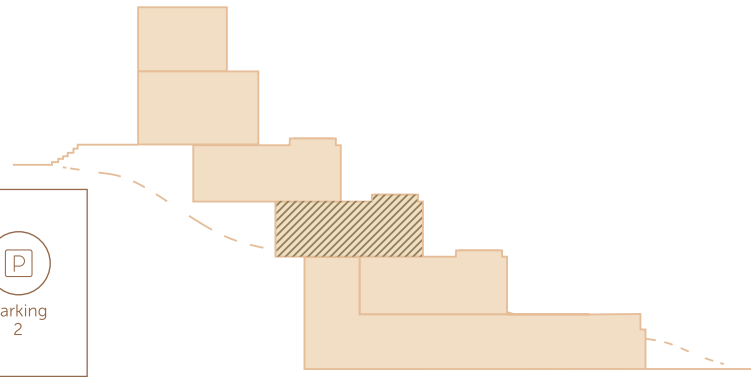
24 LUXURY  
APARTMENTS  
[miradorinfinity.com](http://miradorinfinity.com)

## SURFACES

|                                  |                                |                                 |   |   |             |                                      |
|----------------------------------|--------------------------------|---------------------------------|---|---|-------------|--------------------------------------|
|                                  |                                |                                 |   |   |             |                                      |
| Overall<br>318,04 m <sup>2</sup> | Built<br>318,04 m <sup>2</sup> | Living<br>119,77 m <sup>2</sup> | Terrace + porch + pool<br>112,08 m <sup>2</sup> | Multipurpose room<br>52,26 m <sup>2</sup> | Garden<br>0 | Common areas<br>33,93 m <sup>2</sup> |

## PROPERTIES

|              |             |           |              |              |
|--------------|-------------|-----------|--------------|--------------|
|              |             |           |              |              |
| Bedroom<br>3 | Shower<br>2 | Pool<br>1 | Storage<br>1 | Parking<br>2 |





# VIEW 2<sup>ND</sup> FLOOR A/B/C 21

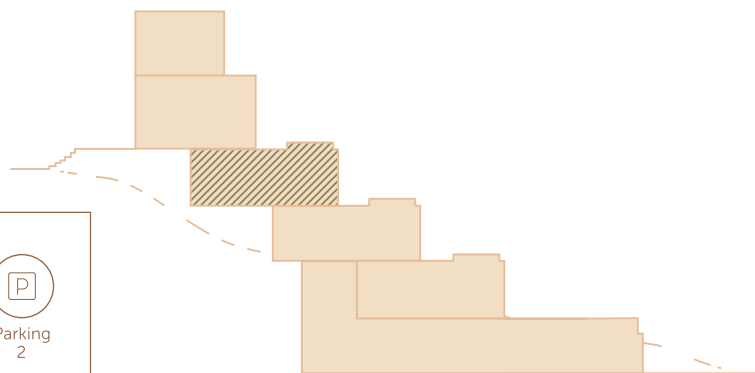


## SURFACES

|                       |                       |                       |                        |                      |        |                      |
|-----------------------|-----------------------|-----------------------|------------------------|----------------------|--------|----------------------|
|                       |                       |                       |                        |                      |        |                      |
| Overall               | Built                 | Living                | Terrace + porch + pool | Multipurpose room    | Garden | Common areas         |
| 323,75 m <sup>2</sup> | 323,75 m <sup>2</sup> | 117,05 m <sup>2</sup> | 113,51 m <sup>2</sup>  | 60,03 m <sup>2</sup> | 0      | 33,16 m <sup>2</sup> |

## PROPERTIES

|         |        |      |         |         |
|---------|--------|------|---------|---------|
|         |        |      |         |         |
| Bedroom | Shower | Pool | Storage | Parking |
| 3       | 2      | 1    | 1       | 2       |



# VIEW 2<sup>ND</sup> FLOOR A/B/C 22

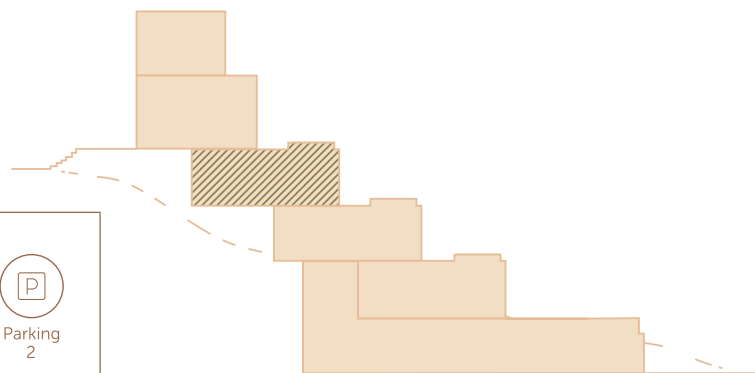


## SURFACES

|                       |                       |                       |                        |                      |        |                      |
|-----------------------|-----------------------|-----------------------|------------------------|----------------------|--------|----------------------|
|                       |                       |                       |                        |                      |        |                      |
| Overall               | Built                 | Living                | Terrace + porch + pool | Multipurpose room    | Garden | Common areas         |
| 323,75 m <sup>2</sup> | 323,75 m <sup>2</sup> | 117,05 m <sup>2</sup> | 113,51 m <sup>2</sup>  | 60,03 m <sup>2</sup> | 0      | 33,16 m <sup>2</sup> |

## PROPERTIES

|         |        |      |         |         |
|---------|--------|------|---------|---------|
|         |        |      |         |         |
| Bedroom | Shower | Pool | Storage | Parking |
| 3       | 2      | 1    | 1       | 2       |



24 LUXURY  
APARTMENTS  
[miradorinfinity.com](http://miradorinfinity.com)





# PENTHOUSE 3<sup>RD</sup> FLOOR A/B/C PH-1

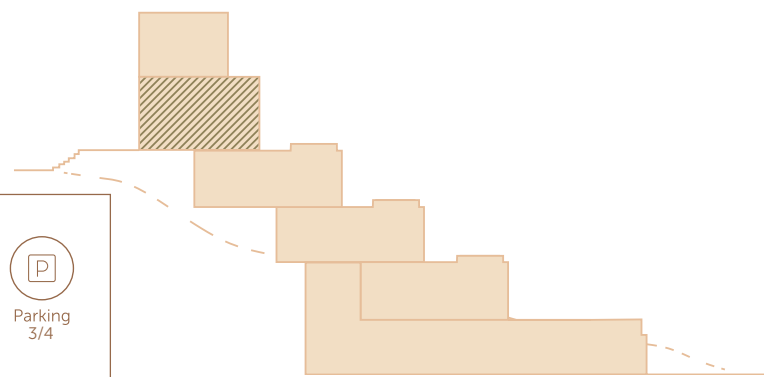


## SURFACES

|                                       |                                |                                 |   |                        |                                       |                                      |
|---------------------------------------|--------------------------------|---------------------------------|---|------------------------|---------------------------------------|--------------------------------------|
|                                       |                                |                                 |   |                        |                                       |                                      |
| Overall<br>513/<br>585 m <sup>2</sup> | Built<br>404,14 m <sup>2</sup> | Living<br>157,85 m <sup>2</sup> | Terrace + porch + pool<br>201,57 m <sup>2</sup> | Multipurpose room<br>0 | Garden<br>101 /<br>181 m <sup>2</sup> | Common areas<br>44,72 m <sup>2</sup> |

## PROPERTIES

|              |             |           |              |                |
|--------------|-------------|-----------|--------------|----------------|
|              |             |           |              |                |
| Bedroom<br>3 | Shower<br>3 | Pool<br>1 | Storage<br>1 | Parking<br>3/4 |



# PENTHOUSE 3<sup>RD</sup> FLOOR A/B/C PH-2



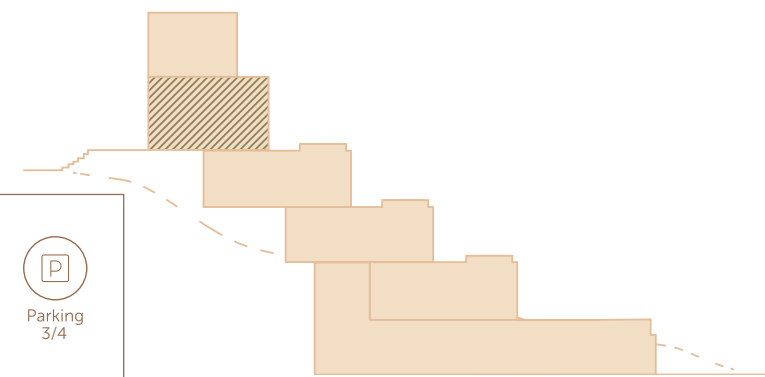
24 LUXURY  
APARTMENTS  
[miradorinfinity.com](http://miradorinfinity.com)

## SURFACES

|                                       |                                |                                 |   |                        |                                       |                                      |
|---------------------------------------|--------------------------------|---------------------------------|---|------------------------|---------------------------------------|--------------------------------------|
|                                       |                                |                                 |   |                        |                                       |                                      |
| Overall<br>513/<br>585 m <sup>2</sup> | Built<br>404,14 m <sup>2</sup> | Living<br>157,85 m <sup>2</sup> | Terrace + porch + pool<br>201,57 m <sup>2</sup> | Multipurpose room<br>0 | Garden<br>101 /<br>181 m <sup>2</sup> | Common areas<br>44,72 m <sup>2</sup> |

## PROPERTIES

|              |             |           |              |                |
|--------------|-------------|-----------|--------------|----------------|
|              |             |           |              |                |
| Bedroom<br>3 | Shower<br>3 | Pool<br>1 | Storage<br>1 | Parking<br>3/4 |





Advertising agency



**HAWKINS**  
MARKETING & TECH-COMMUNICATION

Architects

**MAIZ & DIAZ**  
ARQUITECTOS

Building engineer

**ARCHITECNIA**

Lourdes Molina Hernández  
architecture & management

**MIRADOR**  
DEL PARAISO  
BENAHAVIS · MARBELLA



*Banus Inmo*  
MARBELLA





**INFINITY**  
MIRADOR DEL PARAISO

*Banus Immo*<sup>®</sup>  
MARBELLA

[info@banusimmo.com](mailto:info@banusimmo.com)  
+34 637 877 378    +34 637 877 368

