

Banus Immo<sup>®</sup>  
MARBELLA

OASIS 22  
by MAREIN



NEW GOLDEN MILE · COSTA DEL SOL

Oasis 22 es un nuevo proyecto sobre plano de 22 viviendas pareadas, ubicado en la Nueva Milla de Oro, junto a La Resina Golf y cerca de todo tipo de servicios y facilidades.

Las 22 viviendas disfrutan de un jardín privado de gran tamaño, cocina moderna abierta al salón con electrodomésticos marca Neff, suelos porcelánicos de gran formato, A/A independiente frío-calor, piscina comunitaria, tienen la opción de elegir 3 ó 4 dormitorios, sótano opcional y buenas calidades y terminaciones.

A 10 minutos en coche de Estepona o Puerto Banus, 15 minutos de Marbella y 45 minutos del Aeropuerto Internacional de Málaga.

Un bonito proyecto boutique con la mejor relación calidad-precio.

Oficina de Ventas abierta









Estepona Promenade



Oasis 22 is a new off plan development of 22 semidetached villas located in the New Golden Mile, next to La Resina Golf and close to all kind of services and amenities.

All the 22 houses enjoy a big private garden, open plan modern kitchen with Neff appliances, big size porcelanic flooring, independent A/C hot and cold, communal swimming pool, 3 or 4 bedrooms, optional basement and top quality specifications.

10 minutes drive to Estepona town or Puerto Banus, 15 minutes to Marbella and 45 minutes to Málaga International Airport.

A boutique project that represent the best value for money in the area.









Laguna Village Beach Club

# OASIS 22

by MAREIN

## SEMI DETACHED 03

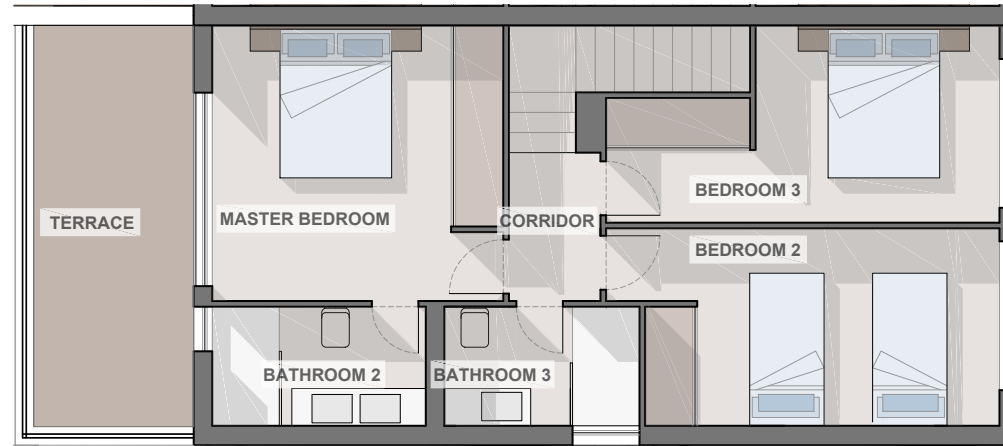
PLOT 306,06m<sup>2</sup>

### GROUND FLOOR

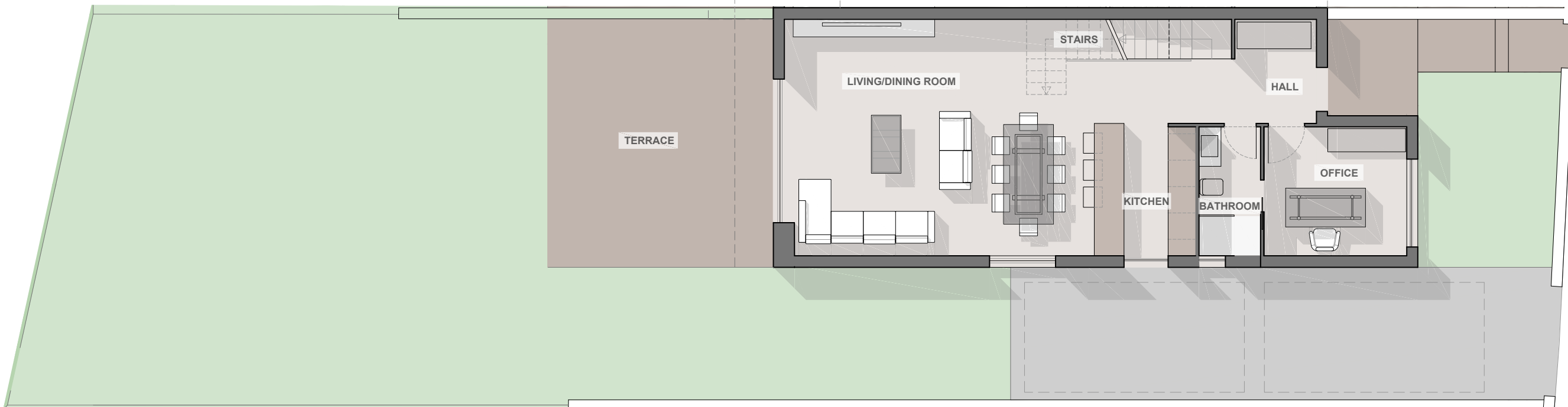
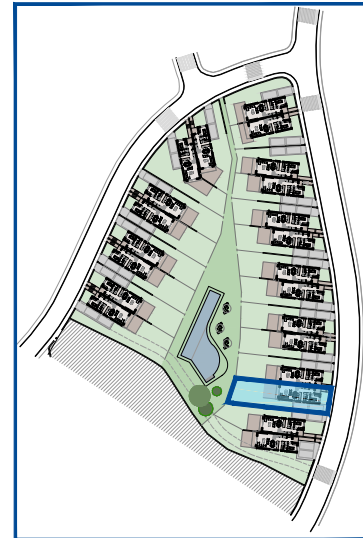
HALL	4,45m <sup>2</sup>
LIVING/DINING ROOM	41,85m <sup>2</sup>
KITCHEN	6,95m <sup>2</sup>
OFFICE	9,60m <sup>2</sup>
BATHROOM	4,15m <sup>2</sup>
STAIRS	4,90m <sup>2</sup>
<b>USEFULL SURFACE</b>	<b>71,90m<sup>2</sup></b>
<b>BUILT SURFACE</b>	<b>79,80m<sup>2</sup></b>
TERRACE	29,00m <sup>2</sup>

### FIRST FLOOR

CORRIDOR	2,55m <sup>2</sup>
MASTER BEDROOM	14,50m <sup>2</sup>
BEDROOM 2	13,10m <sup>2</sup>
BEDROOM 3	12,05m <sup>2</sup>
BATHROOM 2	4,60m <sup>2</sup>
BATHROOM 3	4,20m <sup>2</sup>
<b>USEFULL SURFACE</b>	<b>51,00m<sup>2</sup></b>
<b>BUILT SURFACE</b>	<b>77,80m<sup>2</sup></b>
TERRACE	11,60m <sup>2</sup>



FIRST FLOOR



GROUND FLOOR

# OASIS 22

by MAREIN

*Banus Immo*<sup>®</sup>  
MARBELLA

info@banusimmo.com  
+34 637 877 378 +34 637 877 368

