

Banus Immo[®]
MARBELLA

+34 637 877 378 info@banusimmo.com +34 637 877 368



TERRAZAS DE CORTESÍN
Seaviews

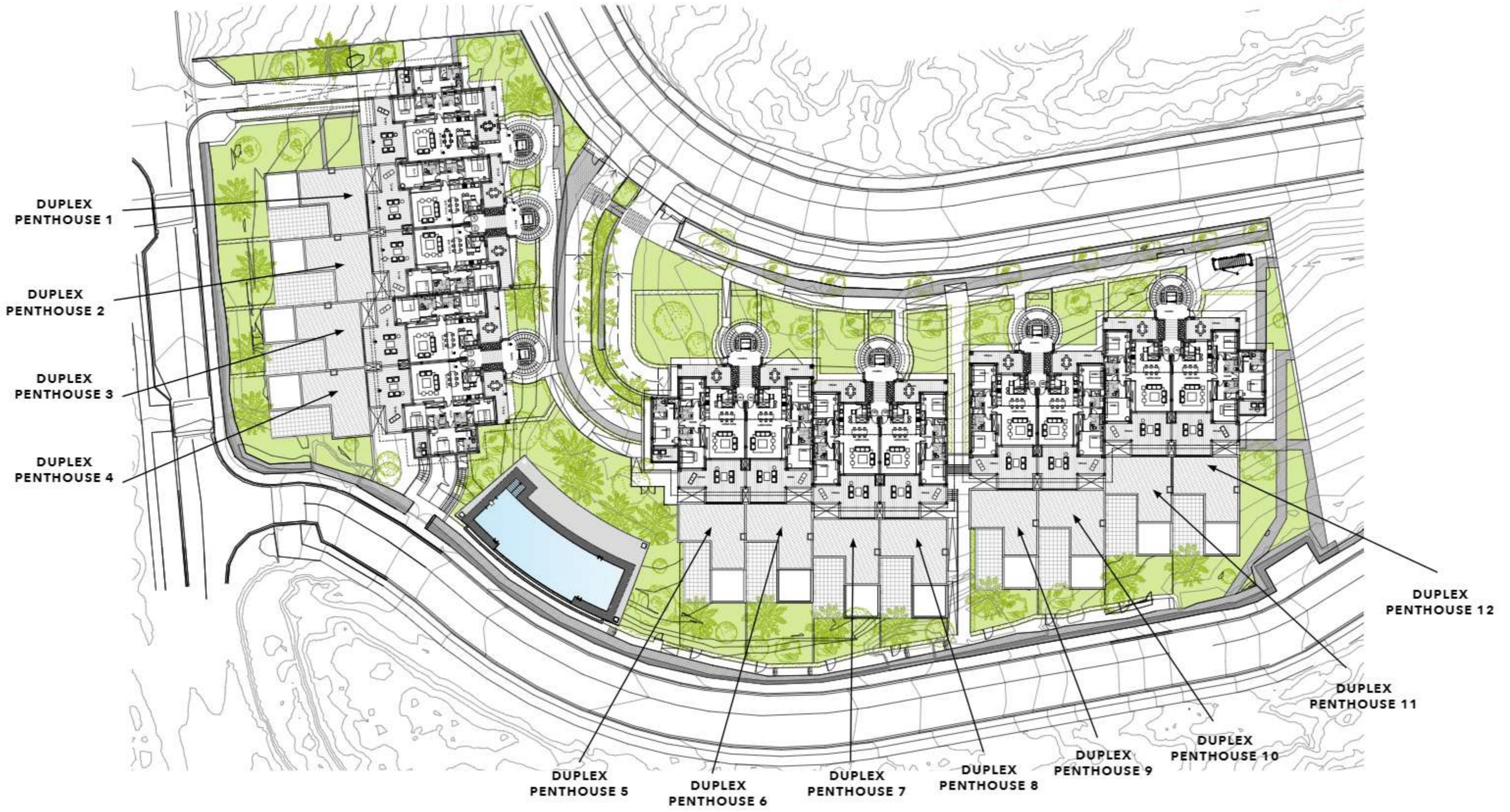


Floor Plans

smart LIVING ...for Smart People

ZONING PLAN

GROUND FLOOR

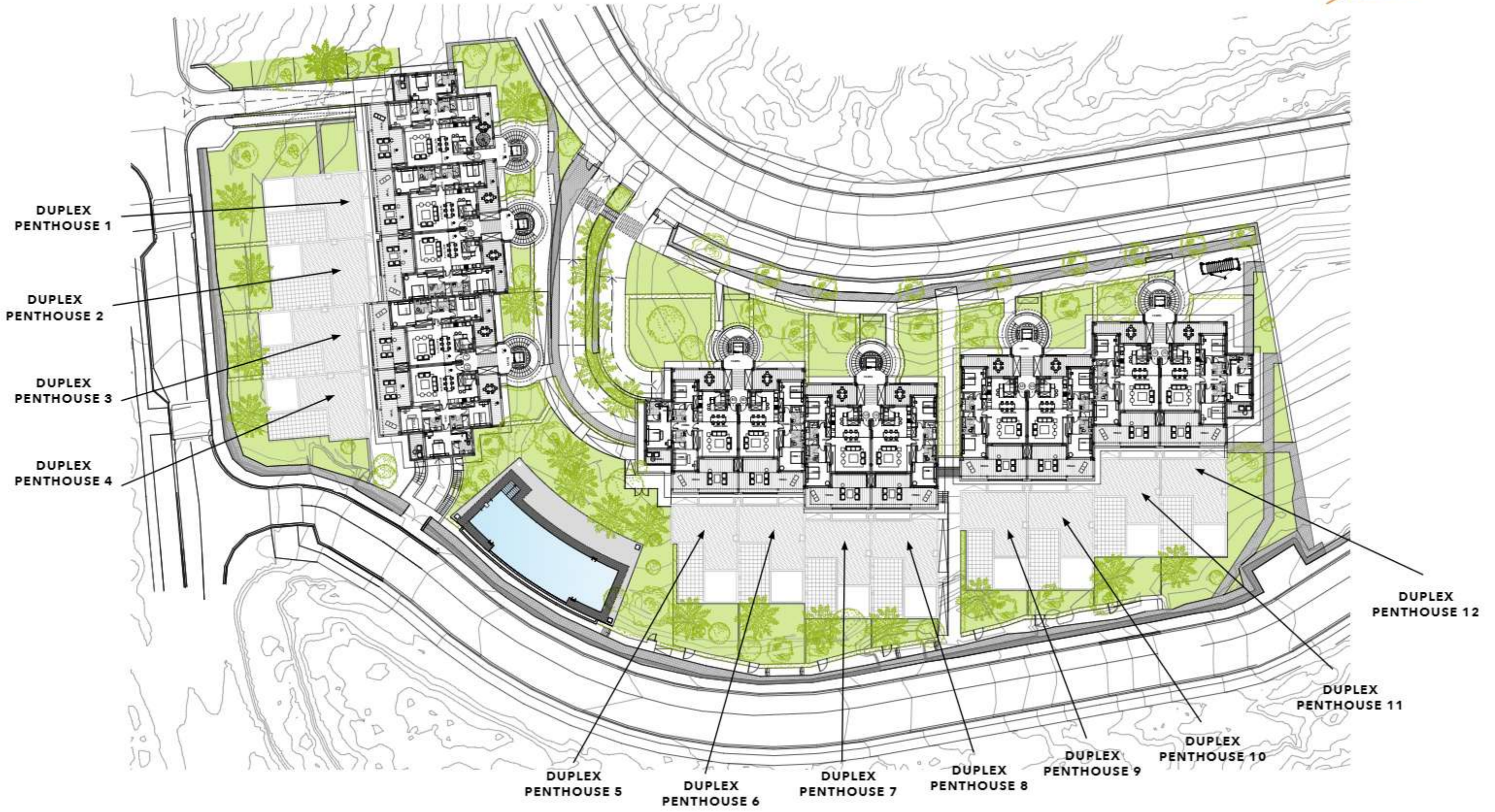


Information and graphic material are purely informative and have no contractual value. They may be subject to changes due to technical or legal requirements or by initiative of the Project Management team. Gardening, decoration and furniture are for the purpose of decoration and are non-binding. The remaining information referring to the Royal Decree 218/2005 from the Andalusian Government is available in our offices.



ZONING PLAN

FIRST FLOOR



Information and graphic material are purely informative and have no contractual value. They may be subject to changes due to technical or legal requirements or by initiative of the Project Management team. Gardening, decoration and furniture are for the purpose of decoration and are non-binding. The remaining information referring to the Royal Decree 218/2005 from the Andalusian Government is available in our offices.

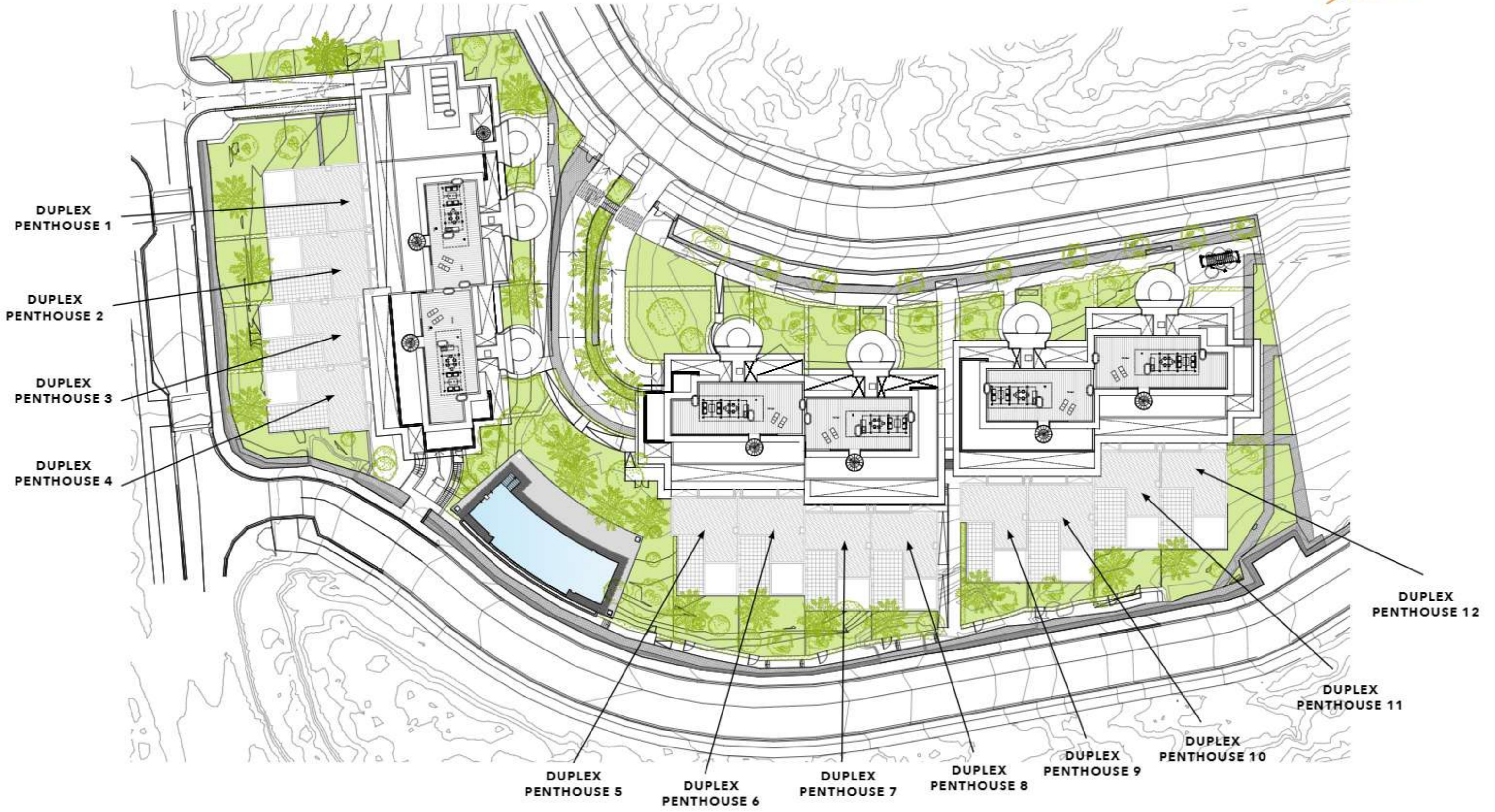


ZONING PLAN

TERRACE FLOOR



TERRAZAS DE CORTESÍN
Seaview

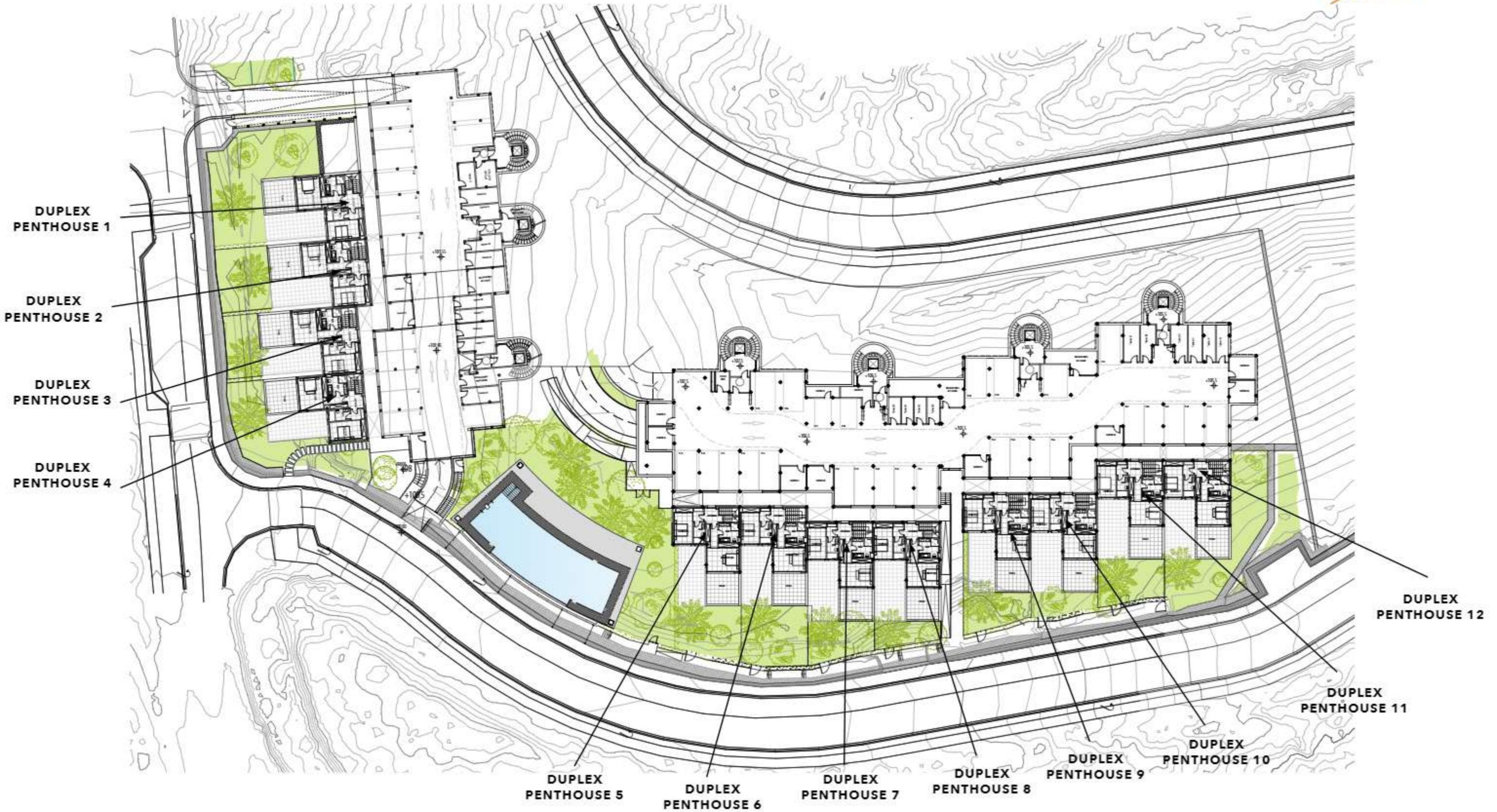


Information and graphic material are purely informative and have no contractual value. They may be subject to changes due to technical or legal requirements or by initiative of the Project Management team. Gardening, decoration and furniture are for the purpose of decoration and are non-binding. The remaining information referring to the Royal Decree 218/2005 from the Andalusian Government is available in our offices.



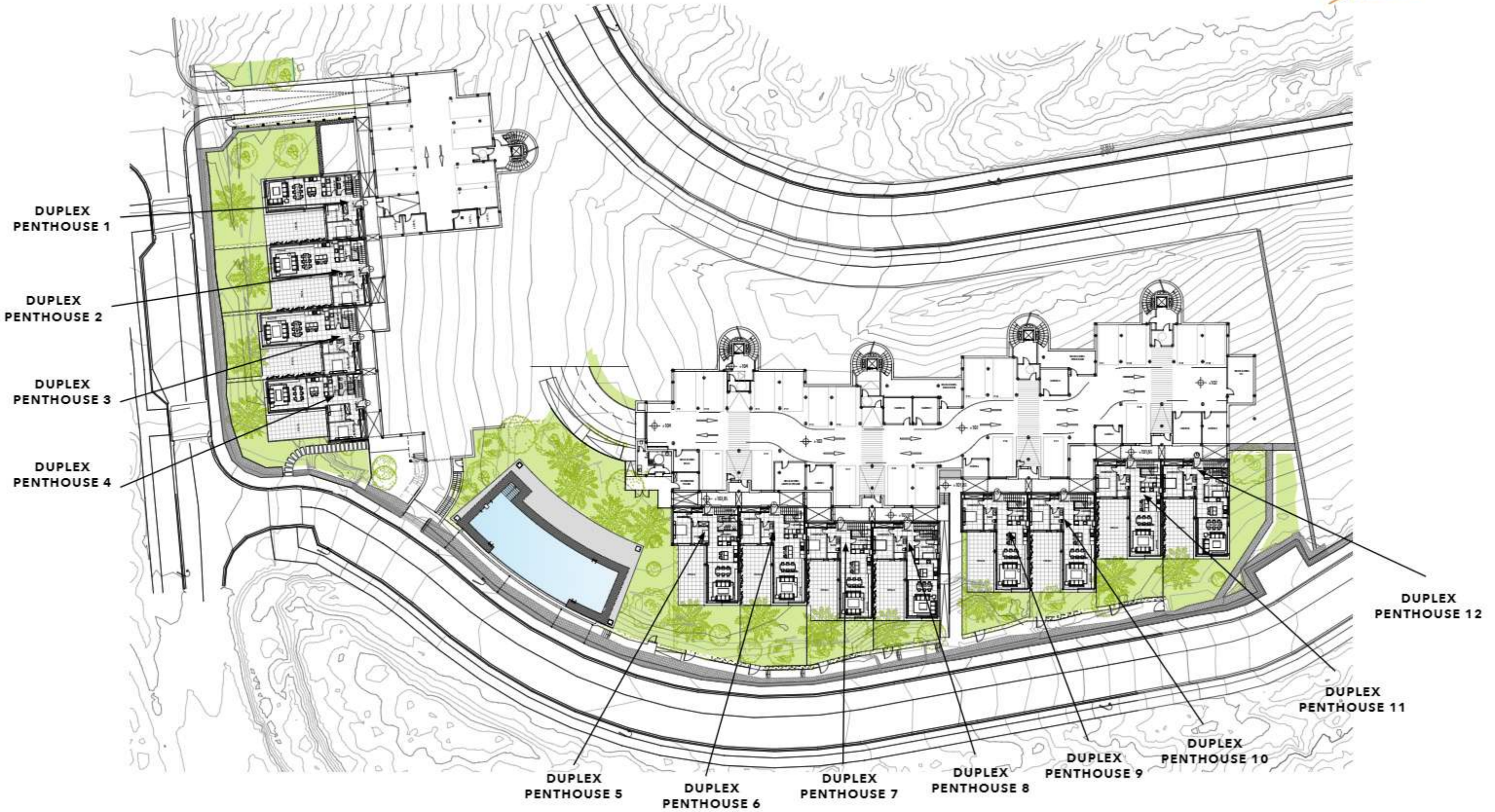
ZONING PLAN

BASEMENT -1 FLOOR

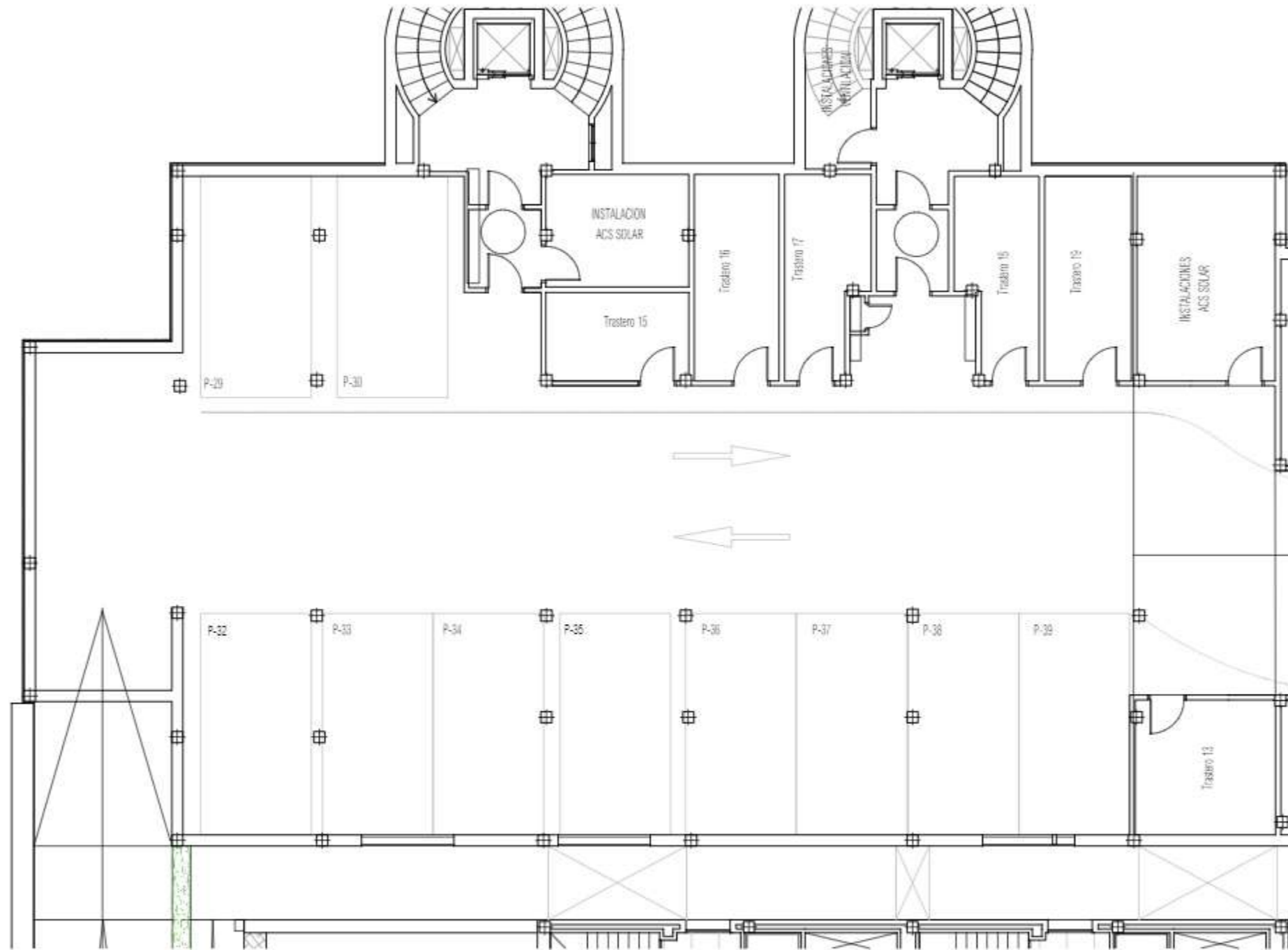


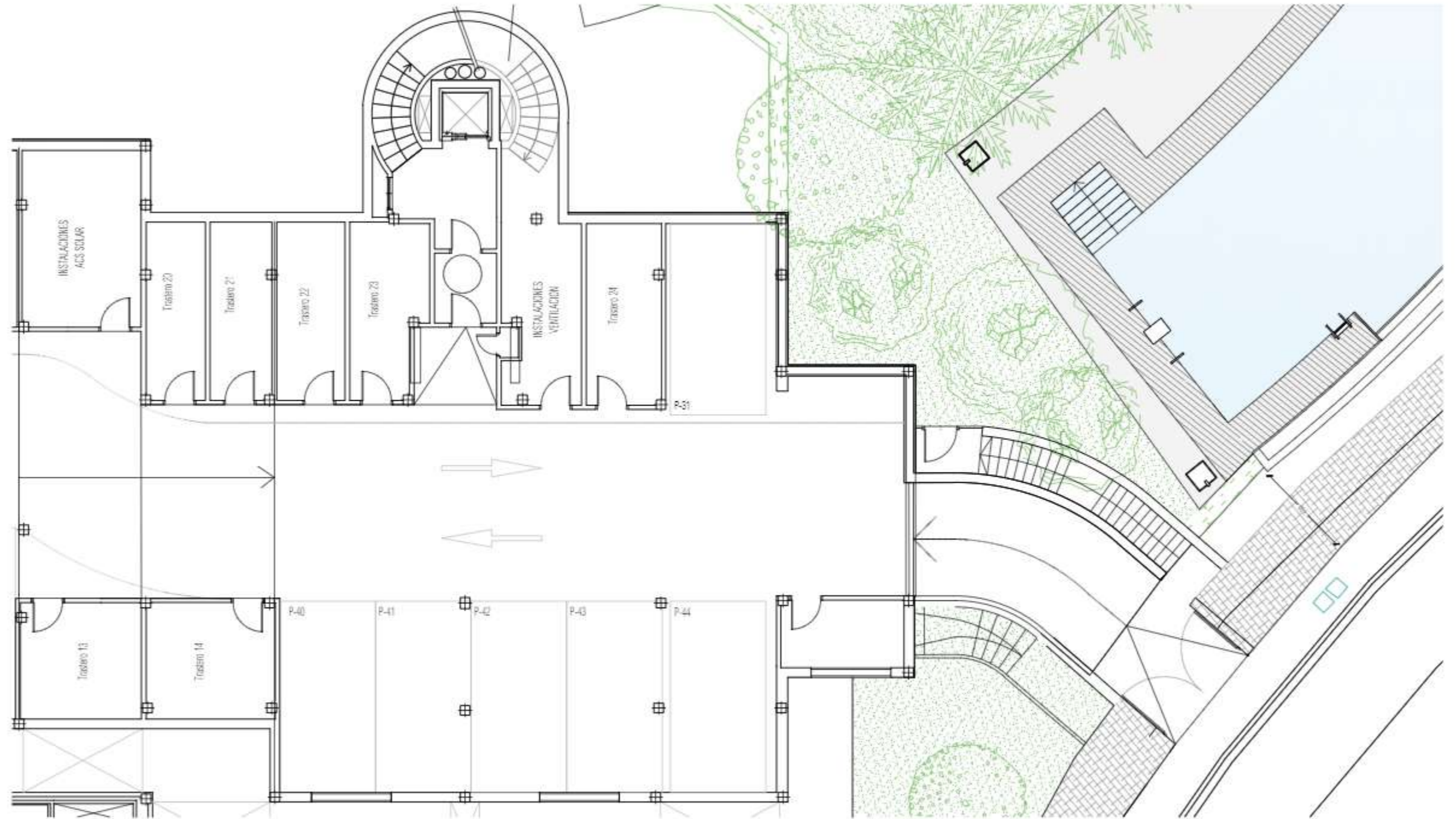
ZONING PLAN

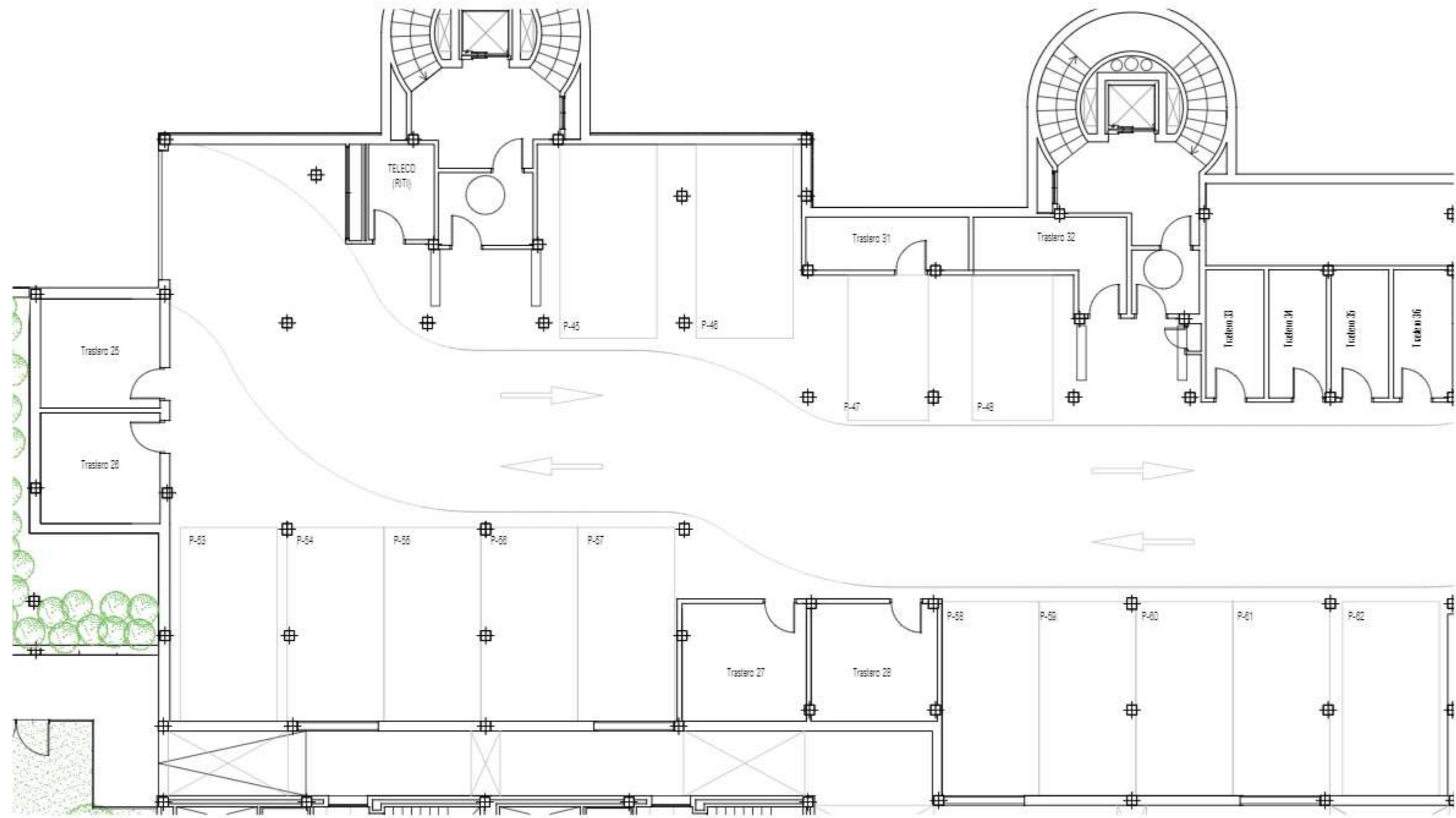
BASEMENT -2 FLOOR

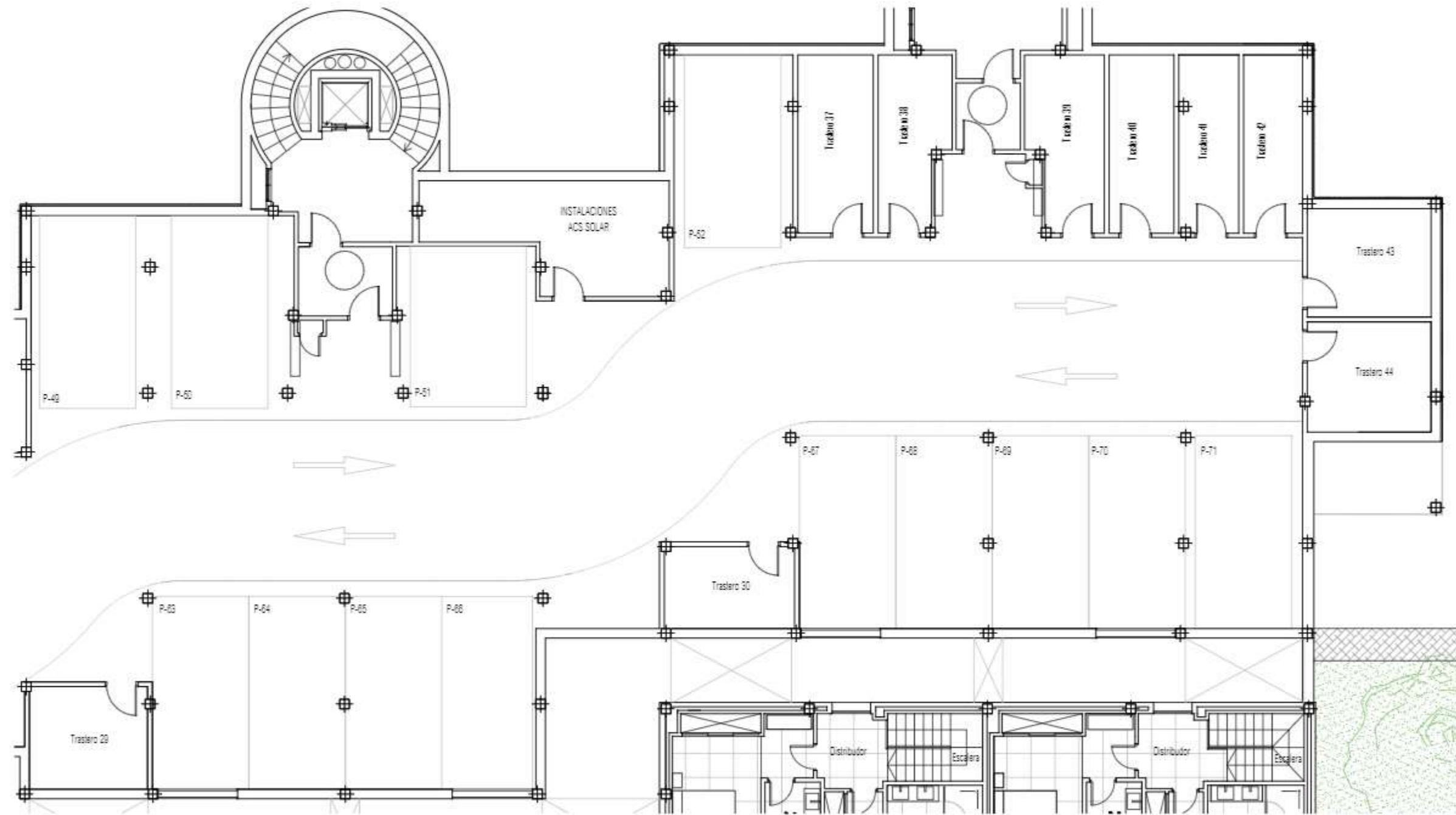


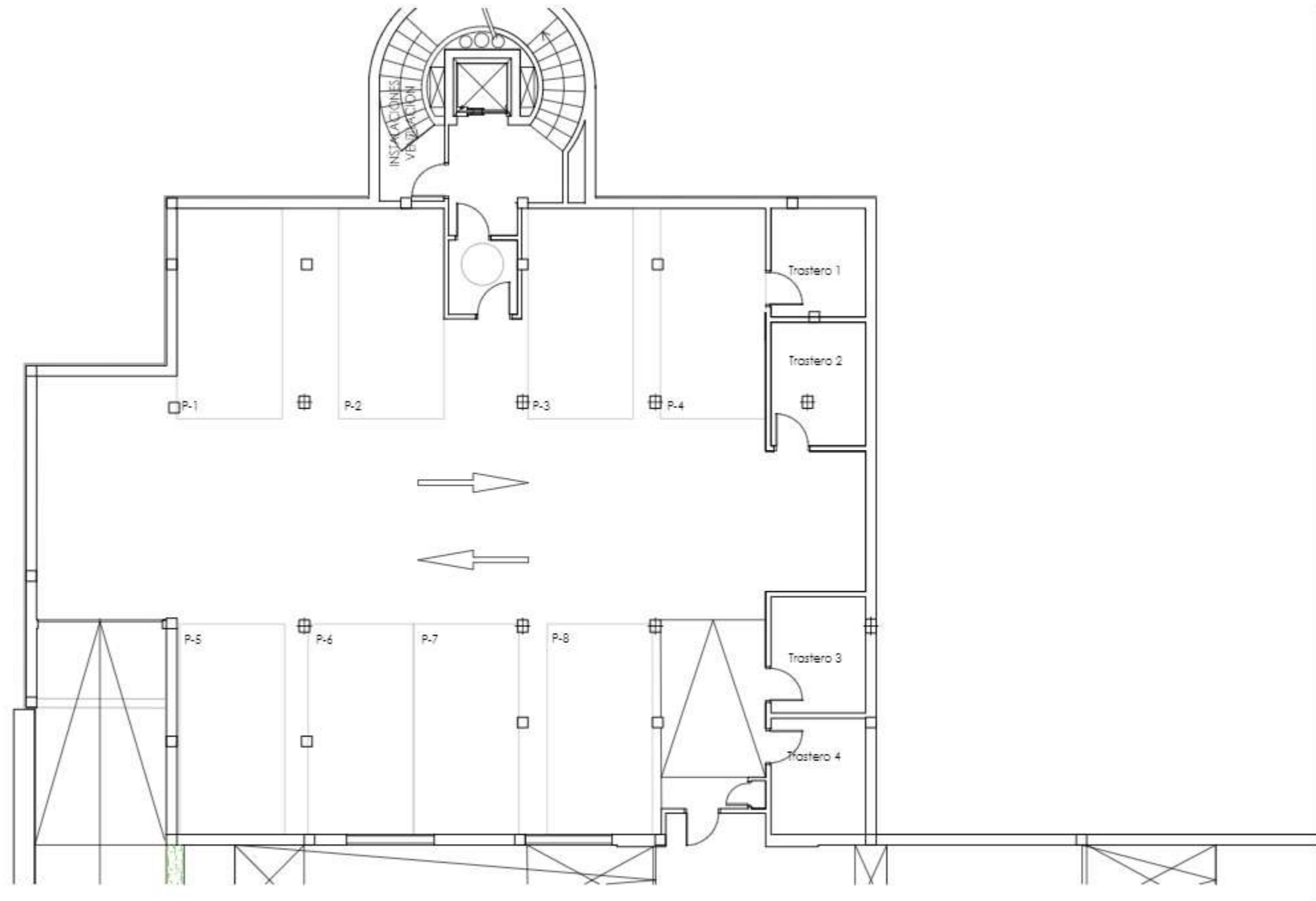
Information and graphic material are purely informative and have no contractual value. They may be subject to changes due to technical or legal requirements or by initiative of the Project Management team. Gardening, decoration and furniture are for the purpose of decoration and are non-binding. The remaining information referring to the Royal Decree 218/2005 from the Andalusian Government is available in our offices.

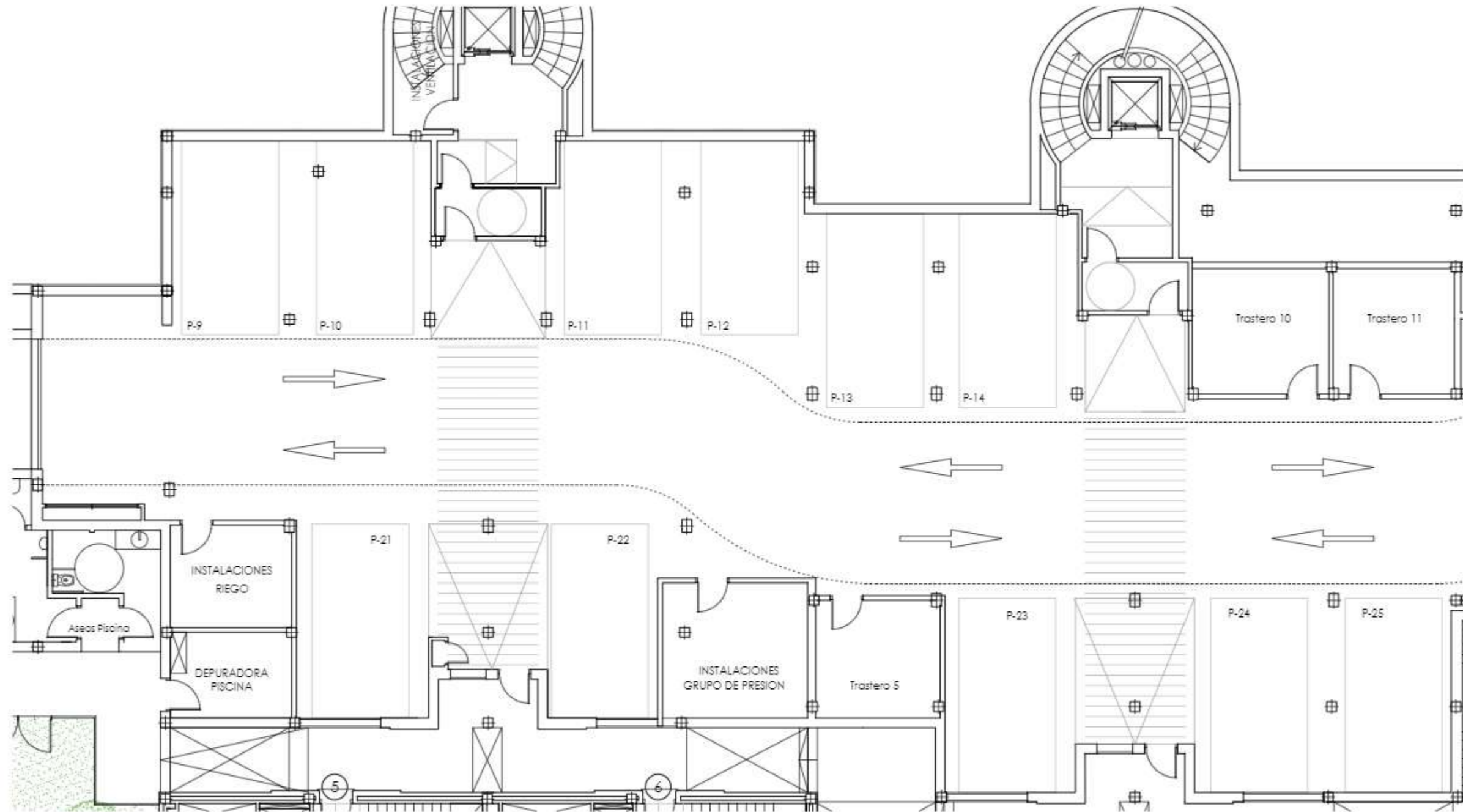


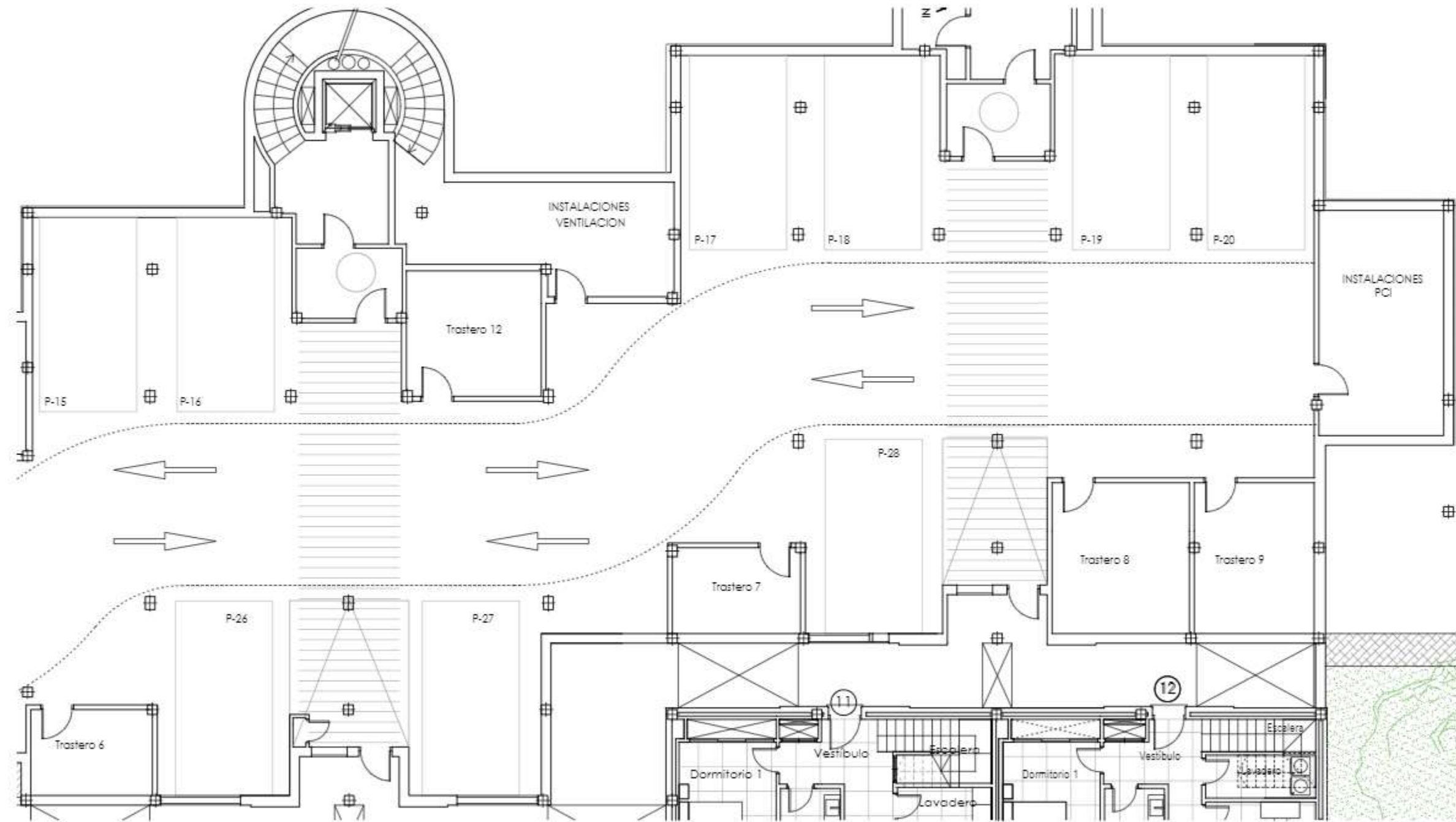














APARTMENTS



TERRAZAS DE CORTESÍN
Seaview

Banus Immo[®]
MARBELLA

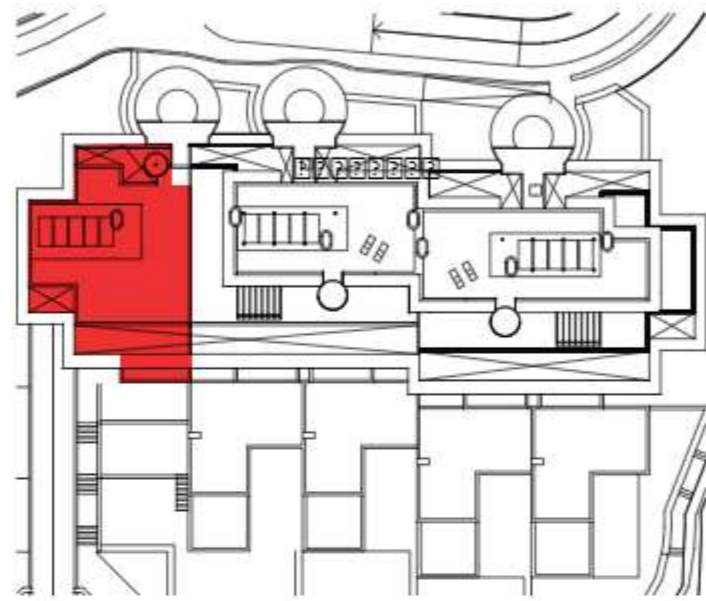
APARTMENT 101

3 BEDROOMS

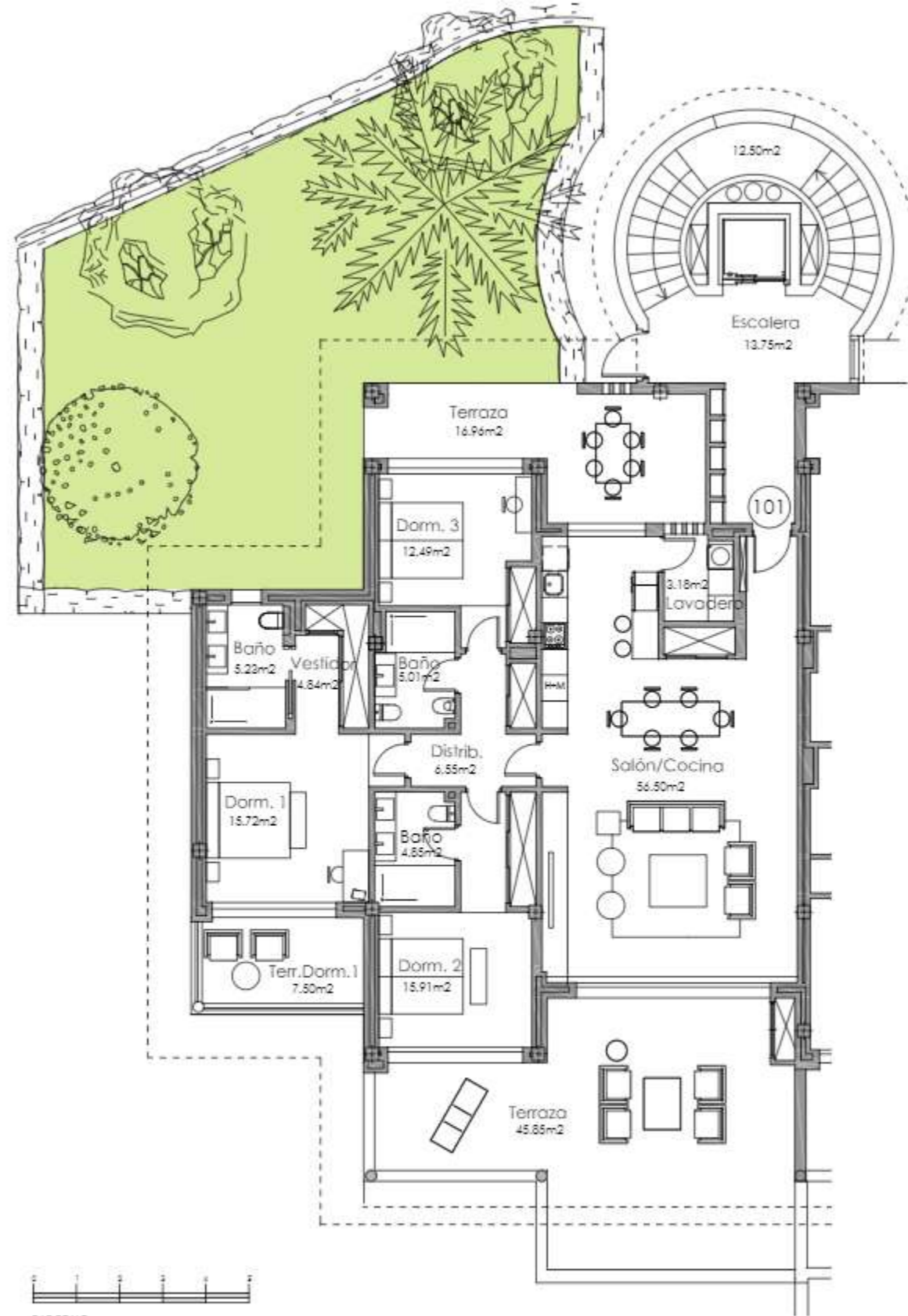
BLOCK A. STAIRCASE 1 GROUND FLOOR



TERRAZAS DE CORTESÍN
Seaview



Block A



SECTOR UR-10A "FINCA EL CORTESÍN" CASARES, MÁLAGA

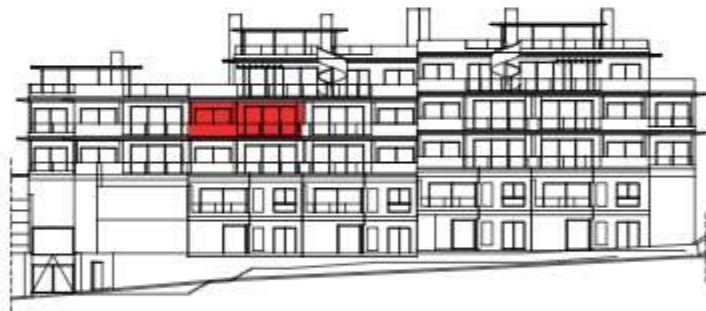
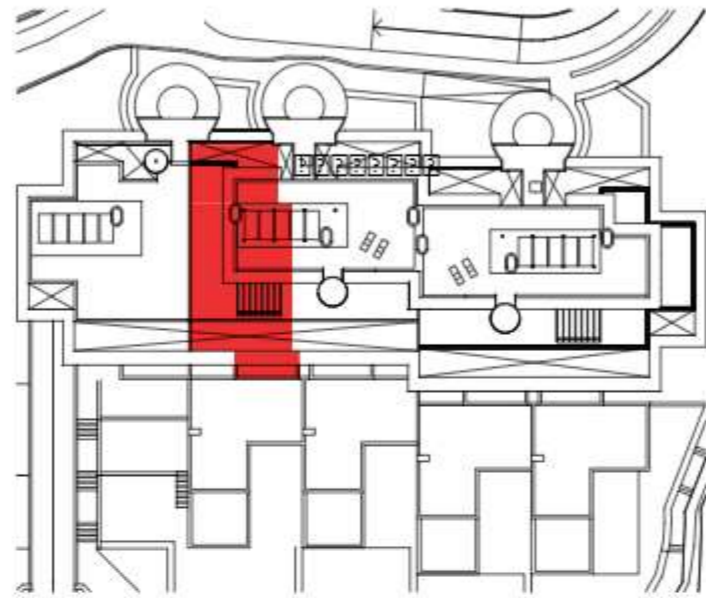
SURFACES	
Surface of constructed area	154,52 m ²
Surface of communal area	6,59 m ²
Surface of terrace area	78,77 m ²
TOTAL SURFACE	239,88 m²
Surface of utilised area	130,31 m ²
Surface of utilised terrace area	70,31 m ²
Surface of utilised garden area	152,42 m ²



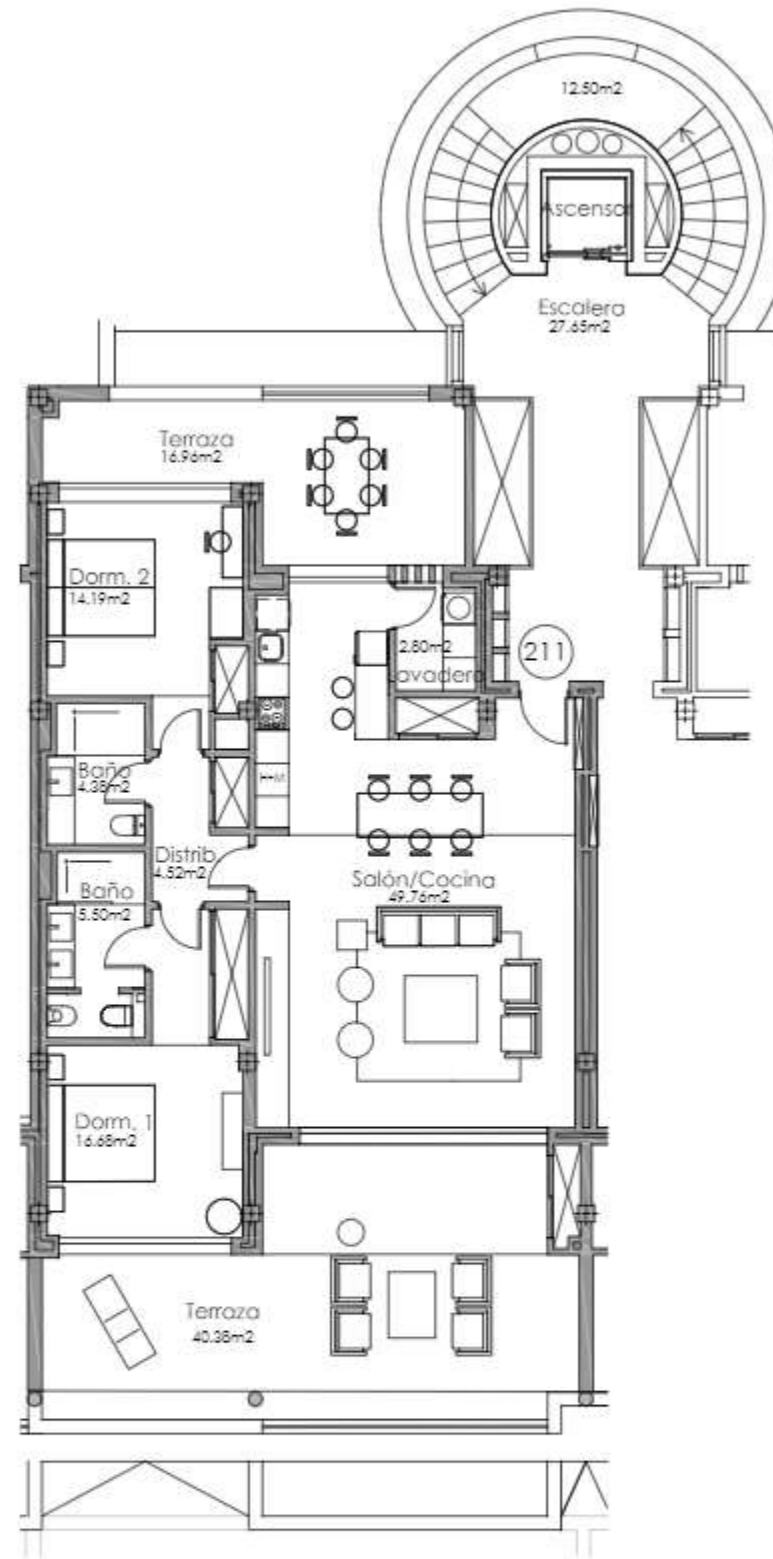
APARTMENT 211

2 BEDROOMS

BLOCK A. STAIRCASE 2 FIRST FLOOR



Block A



SECTOR UR-10A "FINCA EL CORTESÍN" CASARES, MÁLAGA

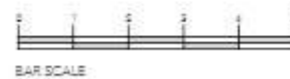
SURFACES

Surface of constructed area	116,46 m ²
Surface of communal area	4,16 m ²
Surface of terrace area	68,16 m ²

TOTAL SURFACE 189,59 m²

Surface of utilised area 97,86 m²

Surface of utilised terrace area 57,34 m²



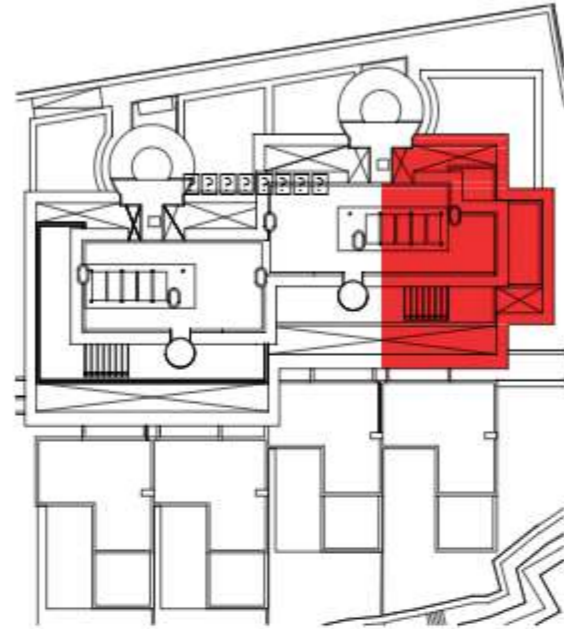
APARTMENT 702

3 BEDROOMS

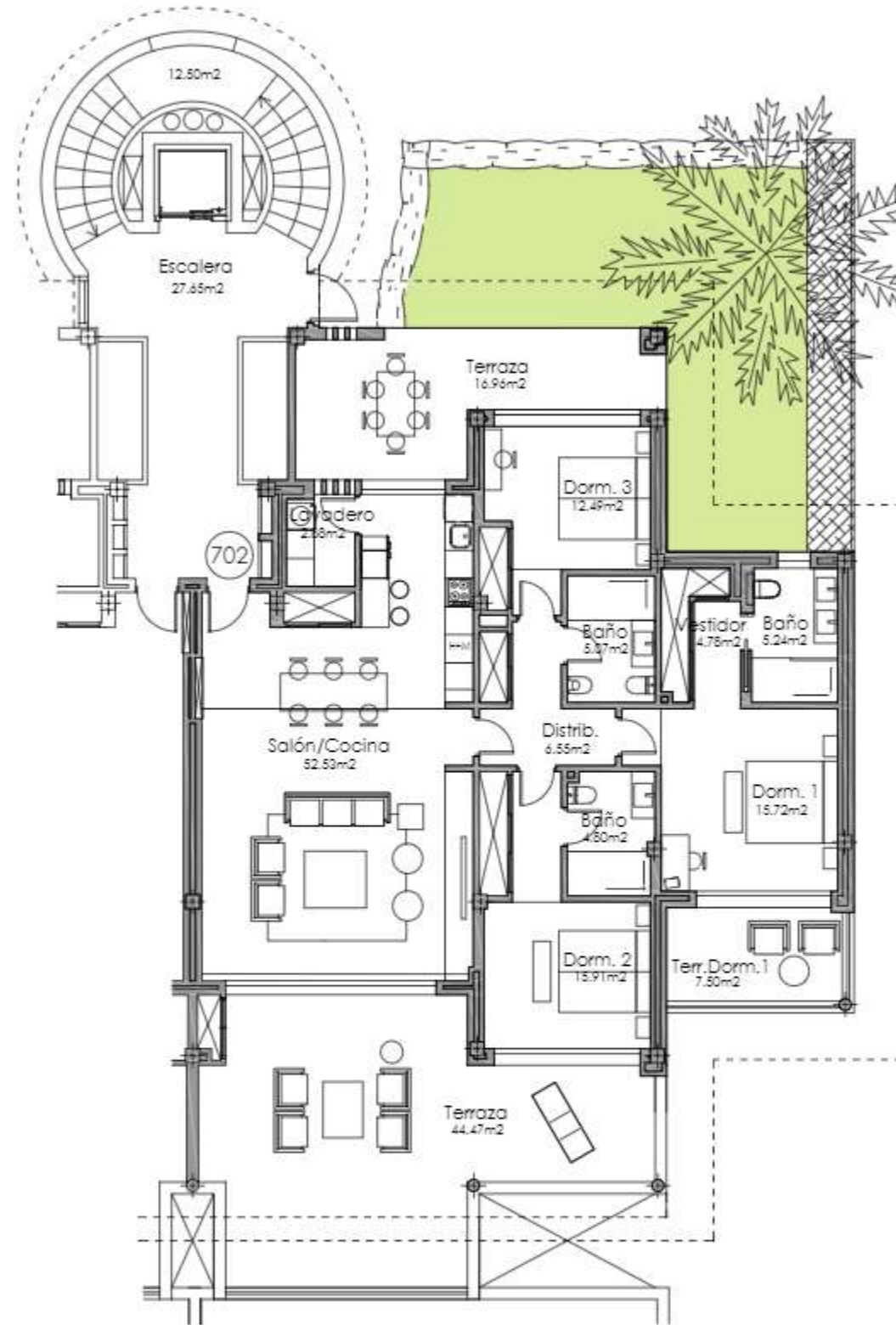
BLOCK C. STAIRCASE 7 GROUND FLOOR



TERRAZAS DE CORTESÍN
Seaview



Block C



SECTOR UR-10A "FINCA EL CORTESÍN" CASARES, MÁLAGA

SURFACES

Surface of constructed area	
Surface of communal area	151,55 m ²
Surface of terrace area	6,47 m ²
TOTAL SURFACE	77,84 m²
	235,86 m ²
Surface of utilised area	
Surface of utilised terrace area	126,01 m ²
Surface of utilised garden area	68,93 m ²
	50,20 m ²

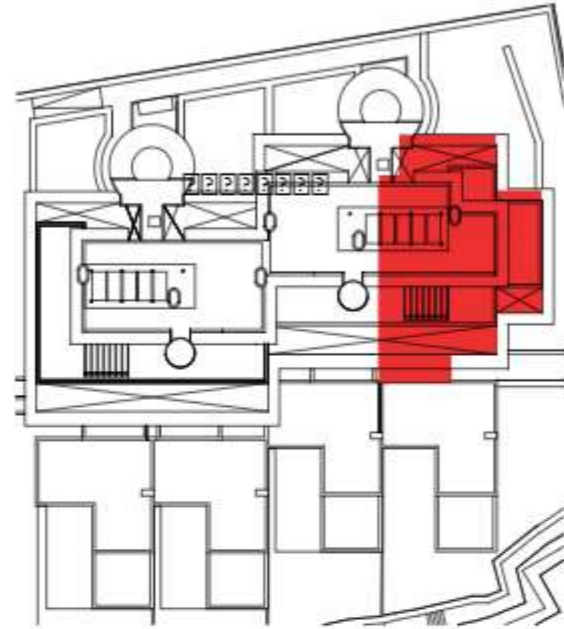
Information and graphic material are purely informative and have no contractual value. They may be subject to changes due to technical or legal requirements or by initiative of the Project Management team. Gardening, decoration and furniture are for the purpose of decoration and are non-binding. The remaining information referring to the Royal Decree 218/2005 from the Andalusian Government is available in our offices.



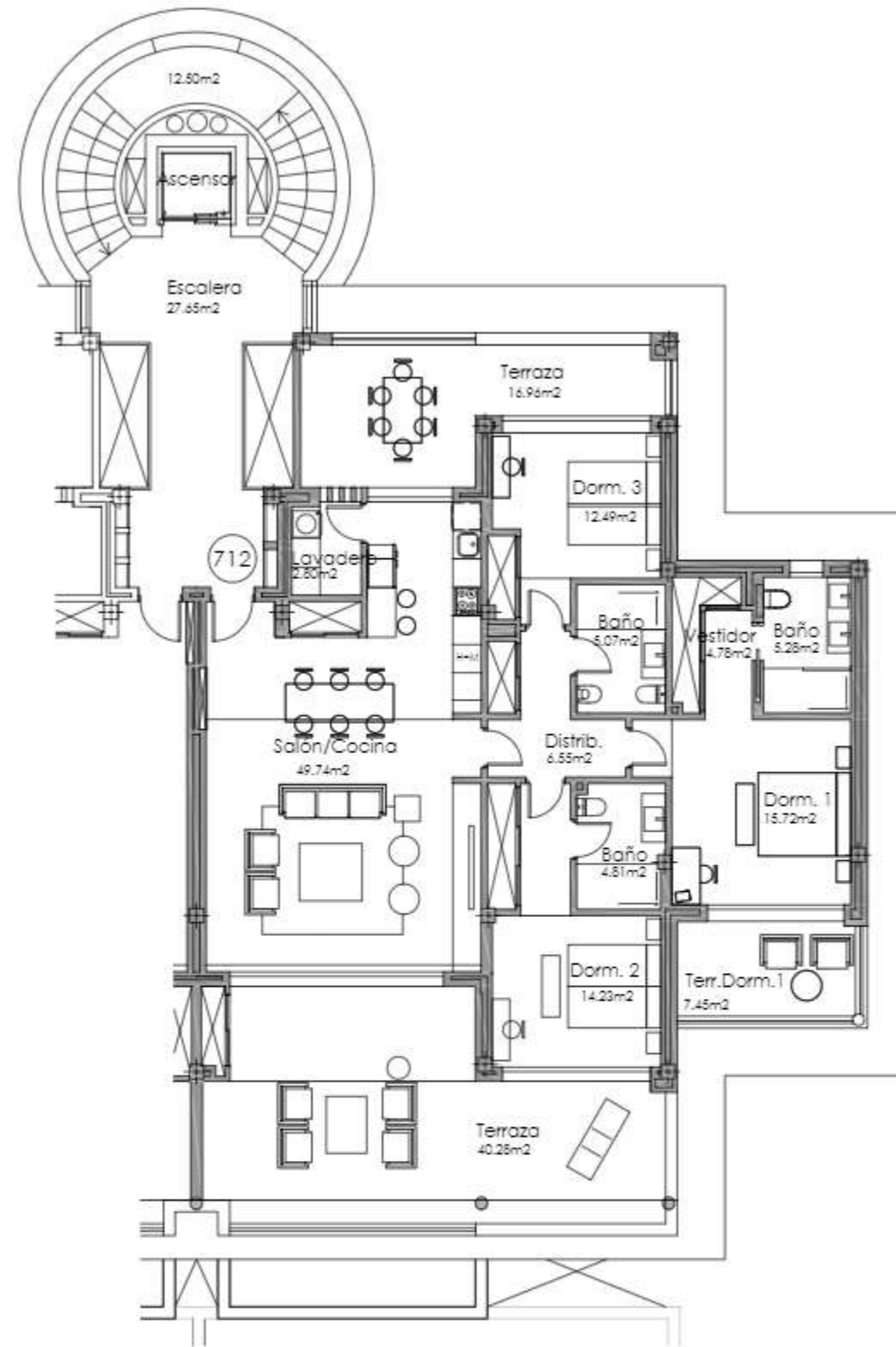
APARTMENT 712

3 BEDROOMS

BLOCK C. STAIRCASE 7 FIRST FLOOR



Block C



SECTOR UR-10A "FINCA EL CORTESÍN" CASARES, MÁLAGA

SURFACES

Surface of constructed area	148,61 m ²
Surface of communal area	6,34 m ²
Surface of terrace area	72,97 m ²

TOTAL SURFACE 227,92 m²

Surface of utilised area	121,51 m ²
Surface of utilised terrace area	64,69 m ²





TERRAZAS DE CORTESÍN
Seaview



TOWNHOUSES



Banus Inmo[®]
MARBELLA

DUPLEX PENTHOUSE 1

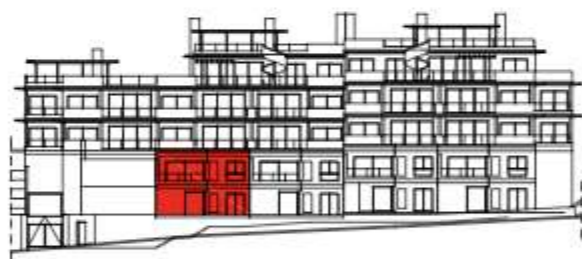
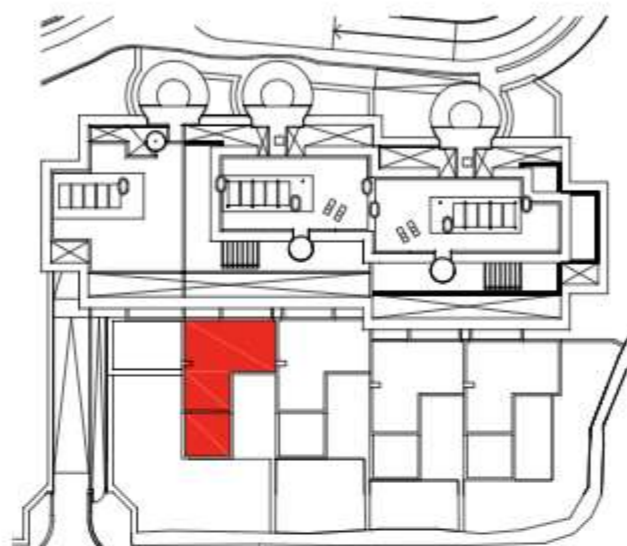
4 BEDROOMS

BLOCK A. STAIRCASE 2 GROUND FLOOR - GARDEN



TERRAZAS DE CORTESÍN

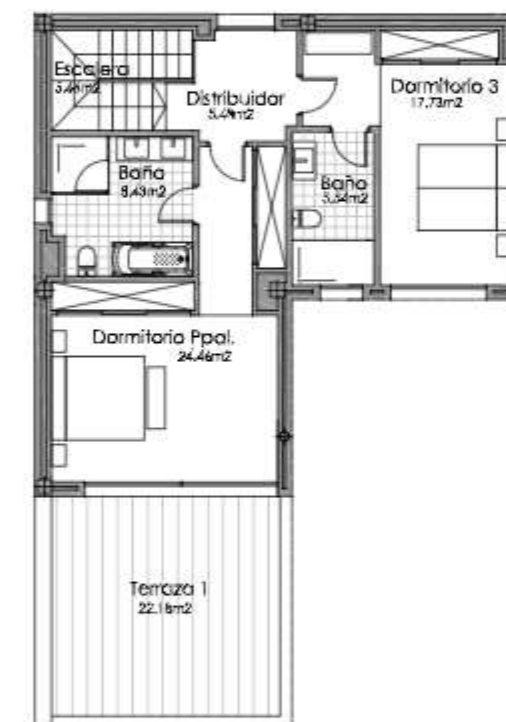
Seaview



Block A



First floor



SECTOR UR-10A "FINCA EL CORTESÍN" CASARES, MÁLAGA

SURFACES

Surface of constructed area	184,56 m ²	Surface of utilised area	155,56 m ²
Surface of communal area	7,88 m ²	Surface of utilised terrace area	63,58 m ²
Surface of terrace area	69,43 m ²	Surface of utilised garden area	190,44 m ²
TOTAL SURFACE	261,87 m²		

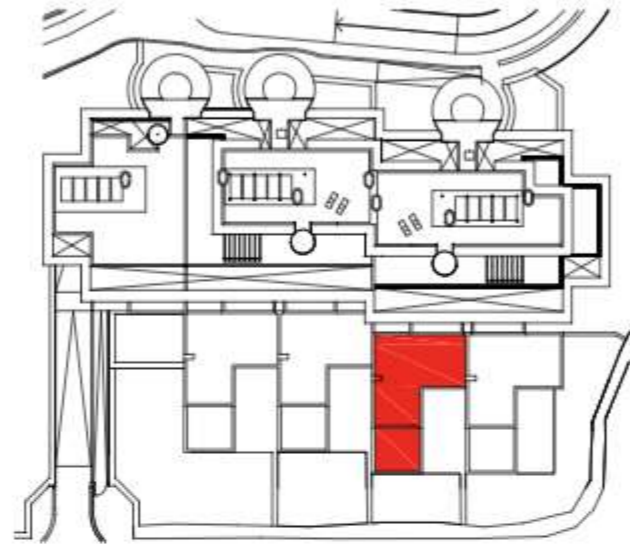
DUPLEX PENTHOUSE 3

3 BEDROOMS

BLOCK A. STAIRCASE 3 GROUND FLOOR - GARDEN

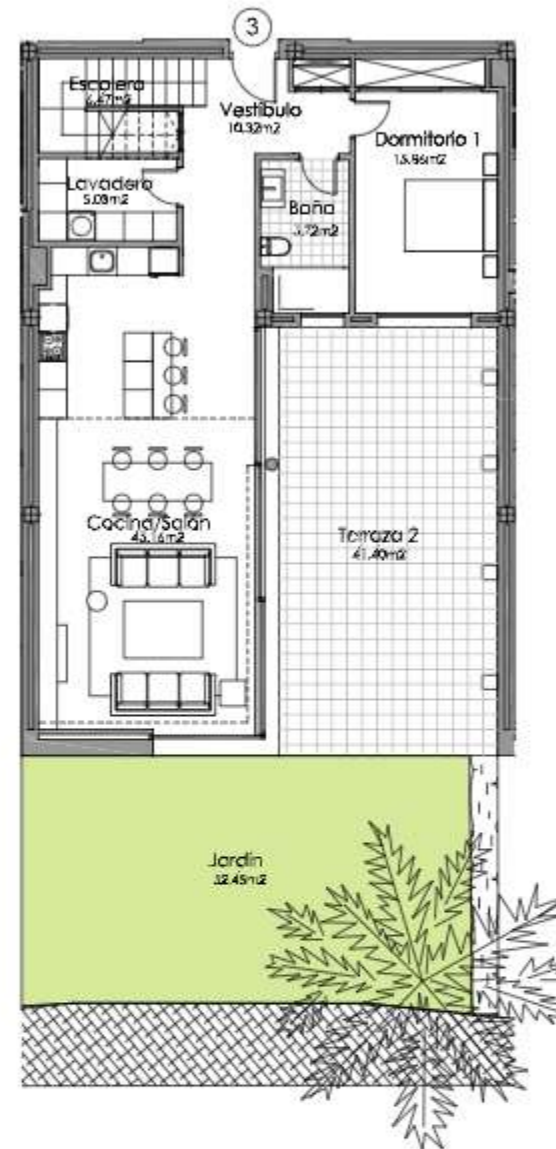


TERRAZAS DE CORTESÍN
Sevilla

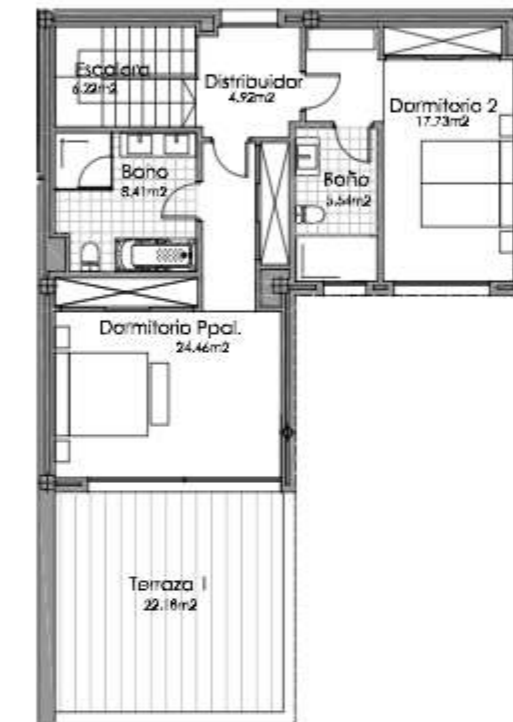


Block A

Ground floor



First floor



SECTOR UR-10A "FINCA EL CORTESÍN" CASARES, MÁLAGA

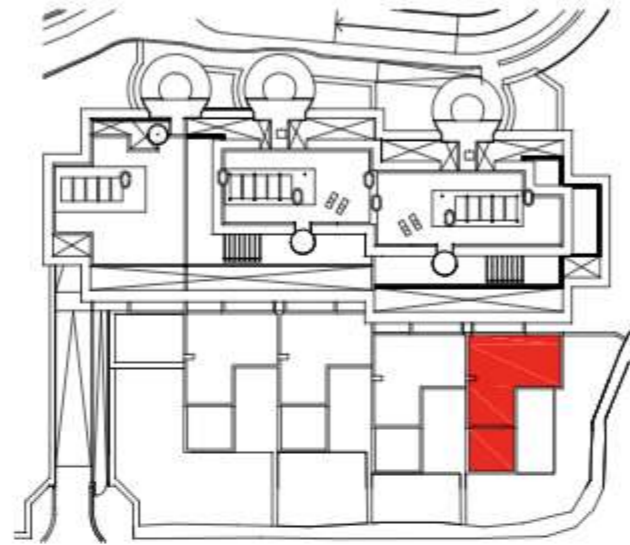
SURFACES

Surface of constructed area	184,56 m ²	Surface of utilised area	155,84 m ²
Surface of communal area	7,88 m ²	Surface of utilised terrace area	63,58 m ²
Surface of terrace area	69,43 m ²	Surface of utilised garden area	52,45 m ²
TOTAL SURFACE	261,87 m²		

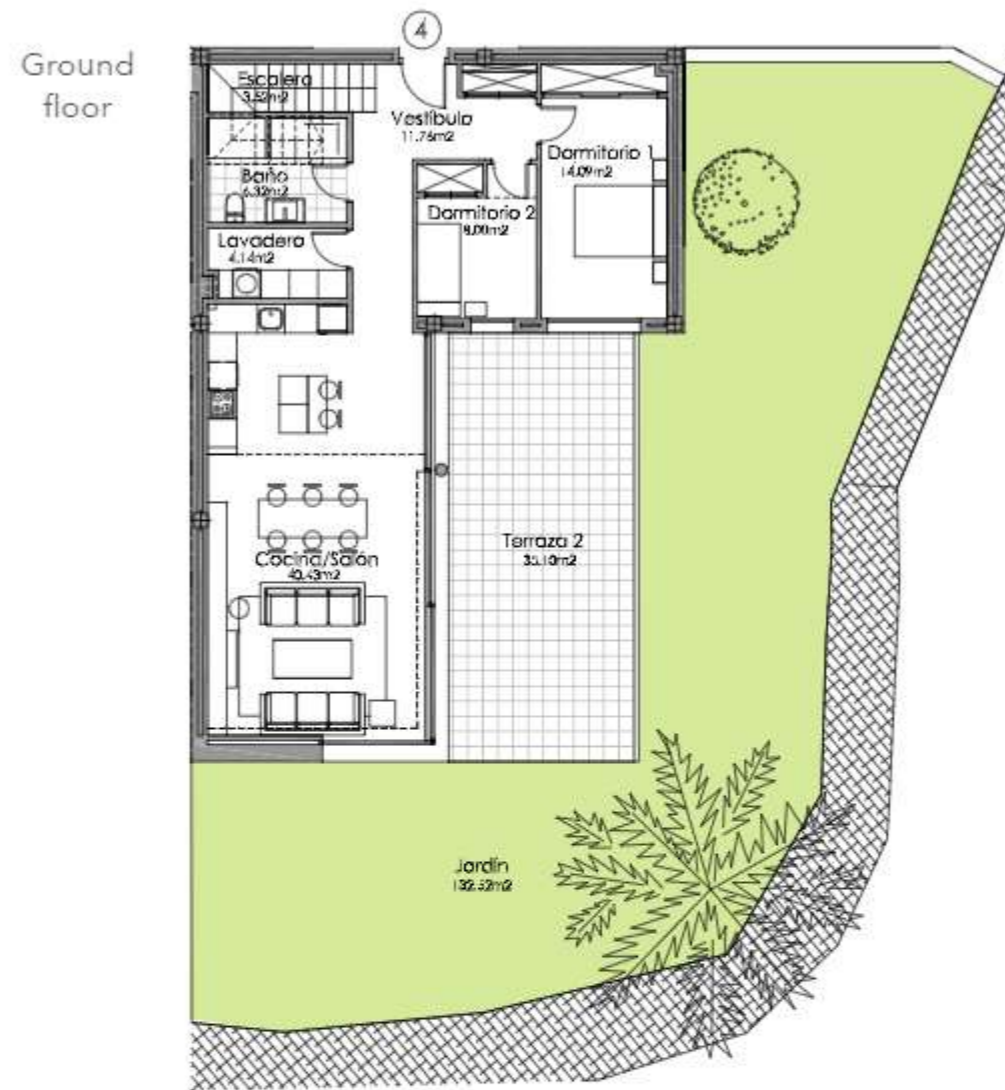
DUPLEX PENTHOUSE 4

4 BEDROOMS

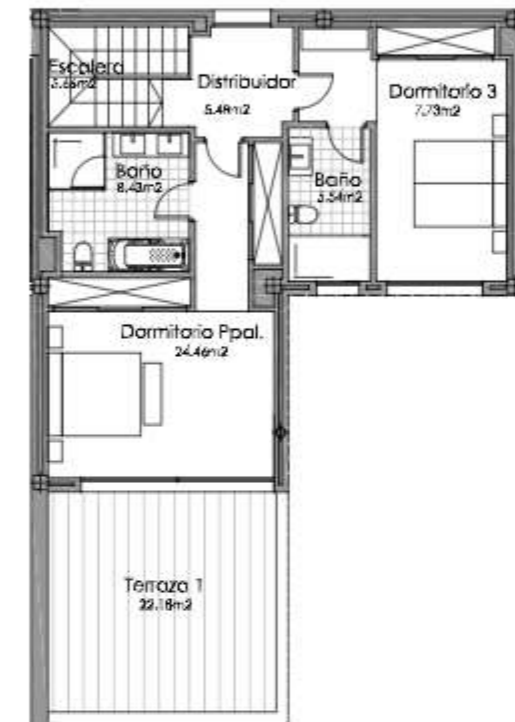
BLOCK A. STAIRCASE 3 GROUND FLOOR - GARDEN



Block A



First floor



SECTOR UR-10A "FINCA EL CORTESÍN" CASARES, MÁLAGA

SURFACES

Surface of constructed area	184,56 m ²	Surface of utilised area	155,56 m ²
Surface of communal area	7,88 m ²	Surface of utilised terrace area	57,28 m ²
Surface of terrace area	62,30 m ²	Surface of utilised garden area	132,52 m ²
TOTAL SURFACE	254,74 m²		

DUPLEX PENTHOUSE 6

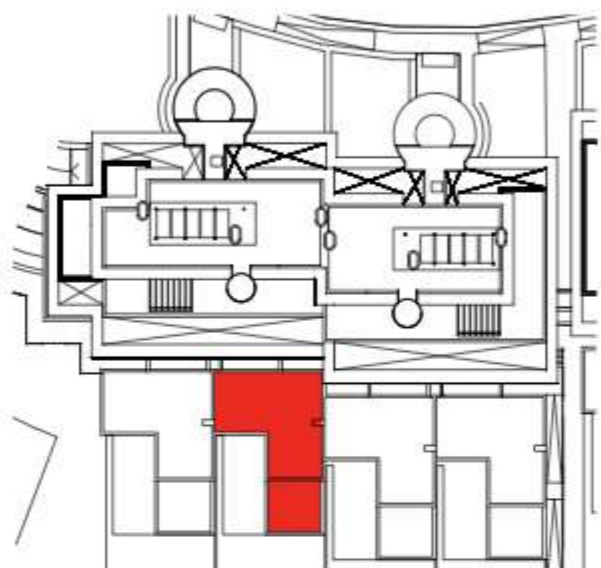
3 BEDROOMS

BLOCK B. STAIRCASE 4 GROUND FLOOR - GARDEN



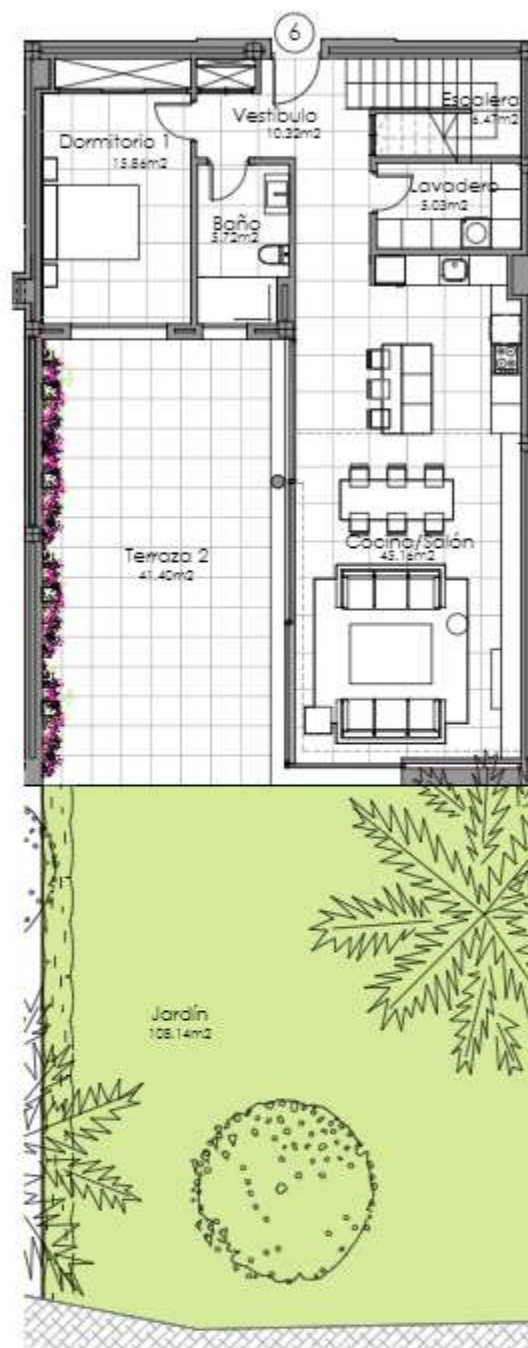
TERRAZAS DE CORTESÍN

Seaview



Block B

Ground floor



First floor



SECTOR UR-10A "FINCA EL CORTESÍN" CASARES, MÁLAGA

SURFACES

Surface of constructed area	184,56 m ²	Surface of utilised area	155,84 m ²
Surface of communal area	7,88 m ²	Surface of utilised terrace area	63,58 m ²
Surface of terrace area	69,43 m ²	Surface of utilised garden area	108,14 m ²
TOTAL SURFACE	261,87 m²		

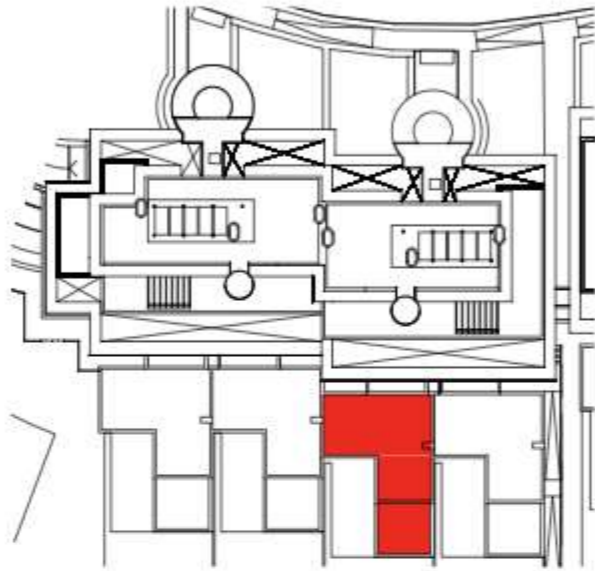
DUPLEX PENTHOUSE 7

3 BEDROOMS

BLOCK B. STAIRCASE 5 GROUND FLOOR - GARDEN

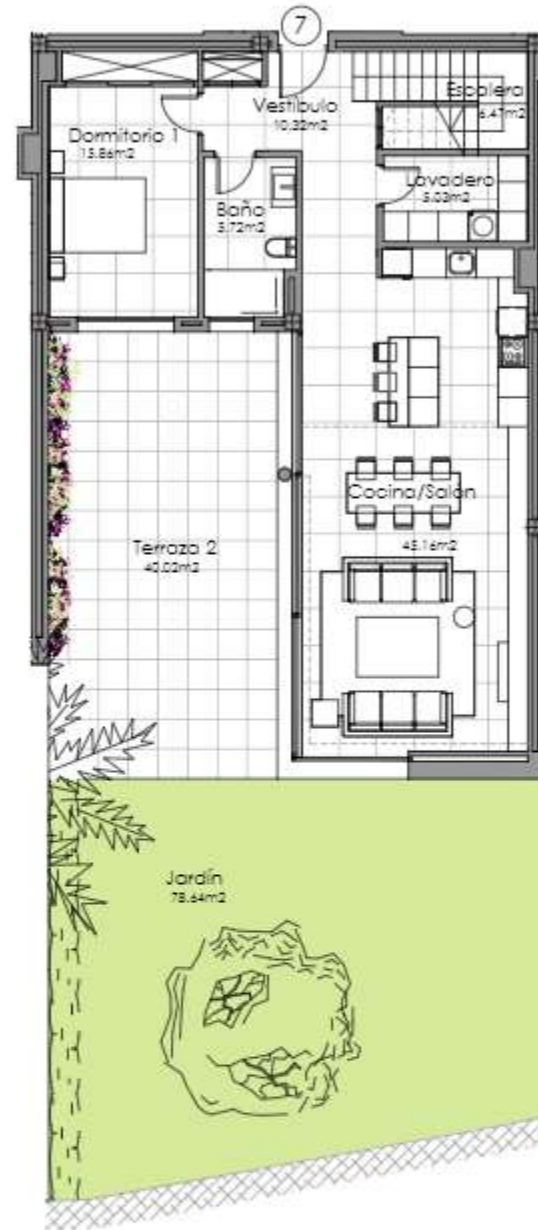


TERRAZAS DE CORTESÍN
Seaview

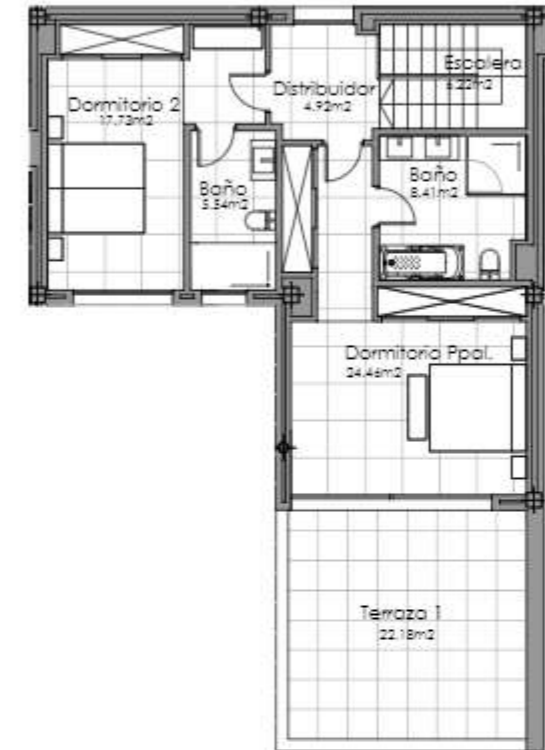


Block B

Ground floor



First floor



SECTOR UR-10A "FINCA EL CORTESÍN" CASARES, MÁLAGA

SURFACES

Surface of constructed area	184,56 m ²	Surface of utilised area	155,84 m ²
Surface of communal area	7,88 m ²	Surface of utilised terrace area	62,20 m ²
Surface of terrace area	67,69 m ²	Surface of utilised garden area	78,64 m ²
TOTAL SURFACE	260,13 m²		

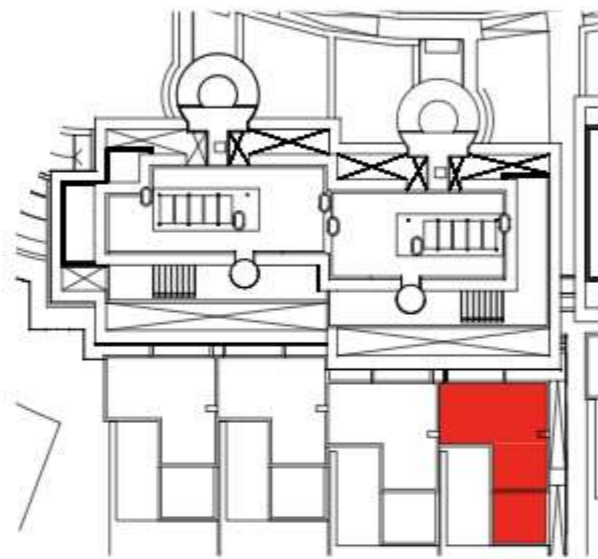
DUPLEX PENTHOUSE 8

3 BEDROOMS

BLOCK B. STAIRCASE 5 GROUND FLOOR - GARDEN



TERRAZAS DE CORTESÍN
Seaview

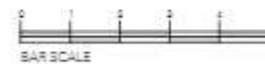
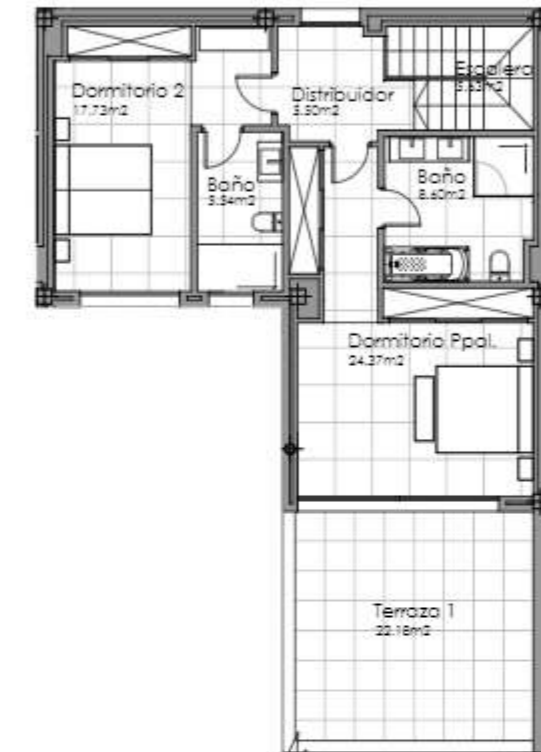


Block B

Ground floor



First floor



SECTOR UR-10A "FINCA EL CORTESÍN" CASARES, MÁLAGA

SURFACES

Surface of constructed area	184,56 m ²	Surface of utilised area	156,15 m ²
Surface of communal area	7,88 m ²	Surface of utilised terrace area	63,14 m ²
Surface of terrace area	69,43 m ²	Surface of utilised garden area	55,20 m ²
TOTAL SURFACE	261,87 m²		

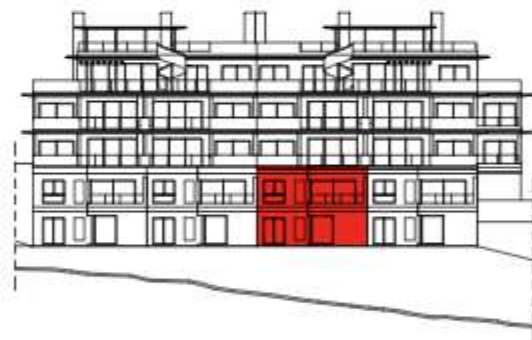
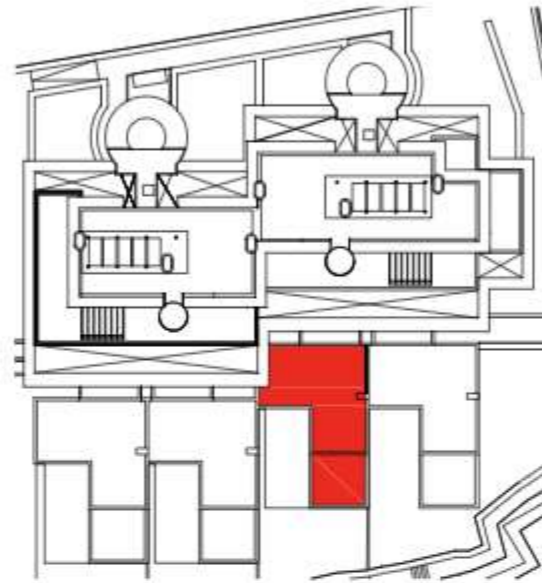
DUPLEX PENTHOUSE 11

3 BEDROOMS

BLOCK C. STAIRCASE 7 GROUND FLOOR - GARDEN



TERRAZAS DE CORTESÍN
Seaview

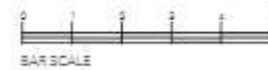
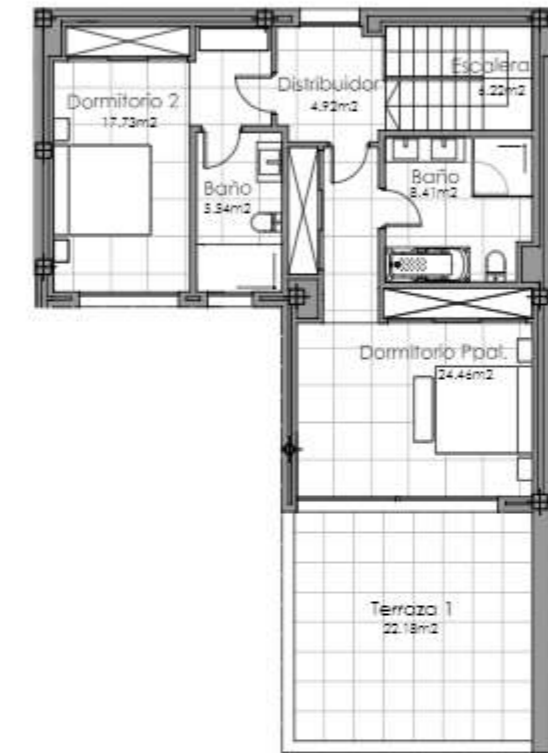


Block C

Ground floor



First floor



SECTOR UR-10A "FINCA EL CORTESÍN" CASARES, MÁLAGA

SURFACES

Surface of constructed area	184,56 m ²	Surface of utilised area	155,84 m ²
Surface of communal area	7,88 m ²	Surface of utilised terrace area	63,58 m ²
Surface of terrace area	69,43 m ²	Surface of utilised garden area	88,57 m ²
TOTAL SURFACE	261,87 m²		

DUPLEX PENTHOUSE 12

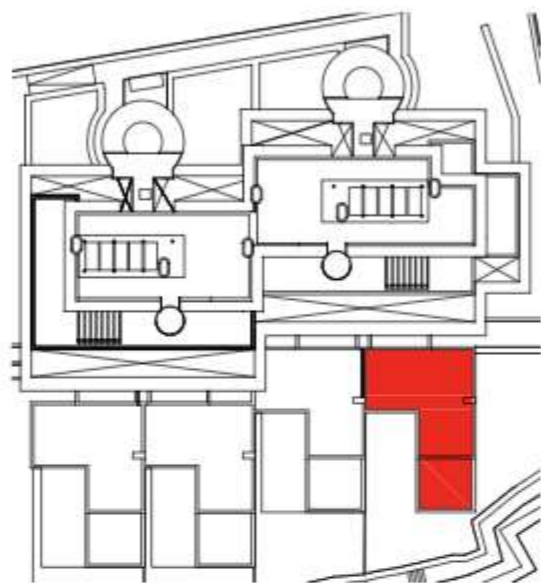
3 BEDROOMS

BLOCK C. STAIRCASE 7 GROUND FLOOR - GARDEN



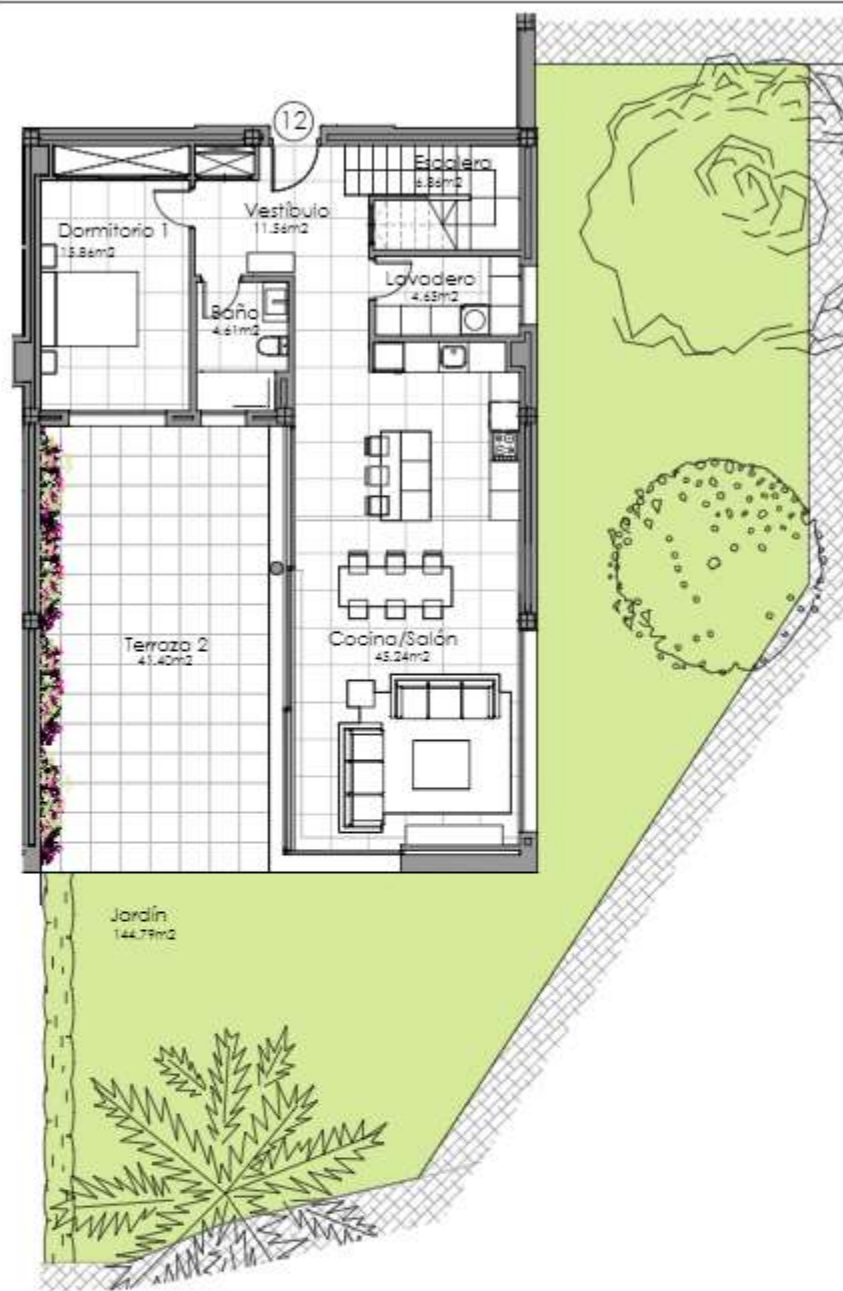
TERRAZAS DE CORTESÍN

Seaview

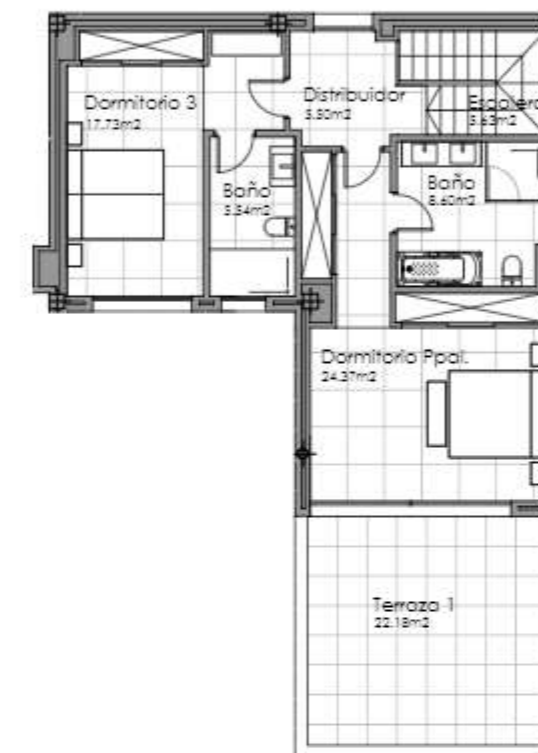


Block C

Ground floor



First floor



SECTOR UR-10A "FINCA EL CORTESÍN" CASARES, MÁLAGA

SURFACES

Surface of constructed area	184,56 m ²	Surface of utilised area	156,15 m ²
Surface of communal area	7,88 m ²	Surface of utilised terrace area	63,58 m ²
Surface of terrace area	69,43 m ²	Surface of utilised garden area	144,79 m ²
TOTAL SURFACE	261,87 m²		

In compliance with the DECREE of the Junta de Andalucía 218/2005, the useful surface of exterior floor spaces which are for the private use of the dwellings means 50% of the actual surface to a maximum of 10% the useful enclosed surface.

Information, computer graphics and graphic documentation that appear in this brochure are indicative, finishes may include extras not included are subject to changes arising from final project and its construction. All the furniture is merely decorative. The other information referred to in R.D.218/2005 of the Government of Andalusia, is available in our offices for consultation.



TERRAZAS DE CORTESÍN

Seaviews

Banus Immo[®]

MARBELLA

info@banusimmo.com

+34 637 877 378

+34 637 877 368